



ACCESS COLLEGE EARLY SCHOLARSHIP 2024-25 YEAR-END REPORT

Statutory Authority Neb. Rev. Stat. § 85-2106

**Committee Draft
September 18, 2025**

COMMISSIONERS

Tim Daniels, Chair
Omaha, Member-at-Large

Dr. Dennis Headrick, Vice Chair
Lincoln, District 1

Dr. Deborah Frison
Omaha, District 2

Dr. LeDonna Griffin
Omaha, Member-at-Large

Mary Lauritzen
West Point, Member-at-Large

Dannika Nelson
Oakland, Member-at-Large

Molly O'Holleran
North Platte, District 6

Dr. Paul Von Behren
Fremont, District 3

Tamara Weber
Columbus, District 5

W. Scott Wilson
Plattsmouth, Member-at-Large

STAFF

Dr. Michael Baumgartner
Executive Director

Dr. Kathleen Fimple
Academic Programs Officer

Jill Heese
Research Coordinator

Kadi Lukesh
*Bookkeeper, Budget Coordinator
& Office Manager*

J. Ritchie Morrow
Financial Aid Officer

Helen Pope
Executive Assistant

Matthew Roque
*Capital Project & Financial
Analyst*

Celeste Thompson
ETA Specialist

Gary Timm
*Chief Finance & Administrative
Officer*

Joe Velasquez
Database Manager

Coordinating Commission for Postsecondary Education
140 N. 8th Street, P.O. Box 95005, Lincoln, NE 68509-5005
Phone: (402) 471-2847

The Commission's reports are available online at ccpe.nebraska.gov/reports

Access College Early (ACE) Scholarship Program

Authorized by the Nebraska Legislature in 2007, the Access College Early (ACE) Scholarship Program pays tuition and mandatory fees for qualified, low-income high school students to enroll in college courses from Nebraska colleges or universities, either through dual enrollment or early enrollment agreements with these institutions. High school students may apply for funding under this program by completing the ACE Student Application, which is reviewed by the Coordinating Commission for award consideration.

To qualify for the scholarship, the student or student's family must be approved to participate in one of the federal need-based government programs listed below, have experienced an extreme hardship that affects family income, or be participating in a designated Career Education program as established by the Nebraska Department of Education.

- Free or Reduced-Price Lunch Program
- Supplemental Security Income
- Temporary Assistance to Needy Families (TANF)
- Supplemental Nutrition Assistance Program (SNAP)
- Special Supplemental Assistance Program (WIC)

The objective of the ACE program is to encourage well-prepared high school students from low-income families to enroll in college courses. High school students who are awarded an ACE scholarship to complete college courses while in high school can decrease their time to graduation and consequently the cost of a degree. However, students must pay to take advantage of these college course opportunities to receive college credit that can jumpstart their college careers. For students who are economically disadvantaged, the financial constraints are great.

Research shows that high school students who take college courses while in high school remain in school and graduate at higher rates, enroll in college at increased rates, and return for their college sophomore years at higher rates. In Nebraska, public high school ACE recipients are 33.5 percentage points more likely to go on to college than other public high school students from low-income families.

As can be seen from the charts starting on page 7, public high school students who are ACE scholarship recipients continue on to college at a much greater rate than public high school students from low-income families that do not receive ACE scholarships. In fact, public high school ACE scholarship recipients continue on to college at a higher rate than public high school students from non-low-income families.

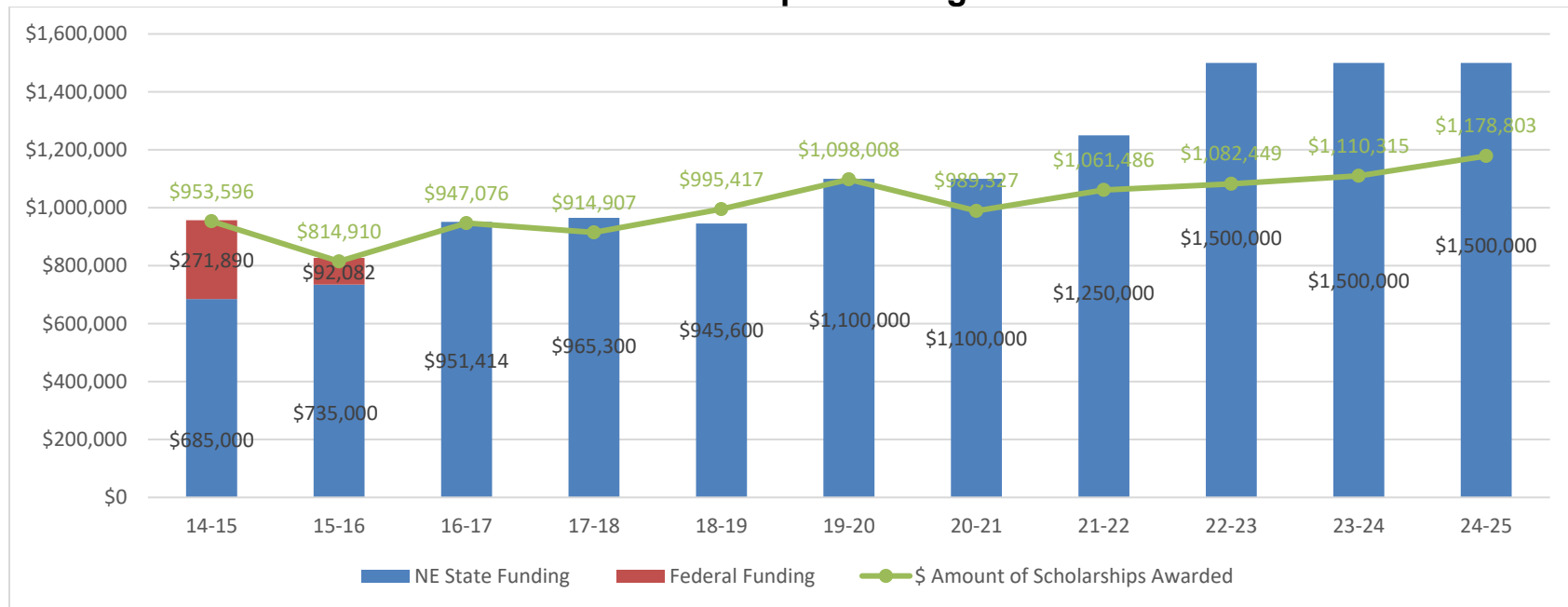
Distribution of the 2024-25 Access College Early Scholarship

The Access College Early (ACE) Scholarship pays the tuition and mandatory fees of eligible Nebraska high school students taking dual-enrollment and early-admit college courses at participating Nebraska colleges and universities¹. For 2024-25 the ACE Scholarship program was funded with \$1,500,000 General funds appropriated by the Legislature.

Nebraska colleges and universities enrolled 2,727 low-income, Nebraska high school students from 196 high schools who received 5,919 ACE Scholarships in 2024-25. The total amount awarded was \$1,178,803.23, with the average award per scholarship equaling \$199.15.

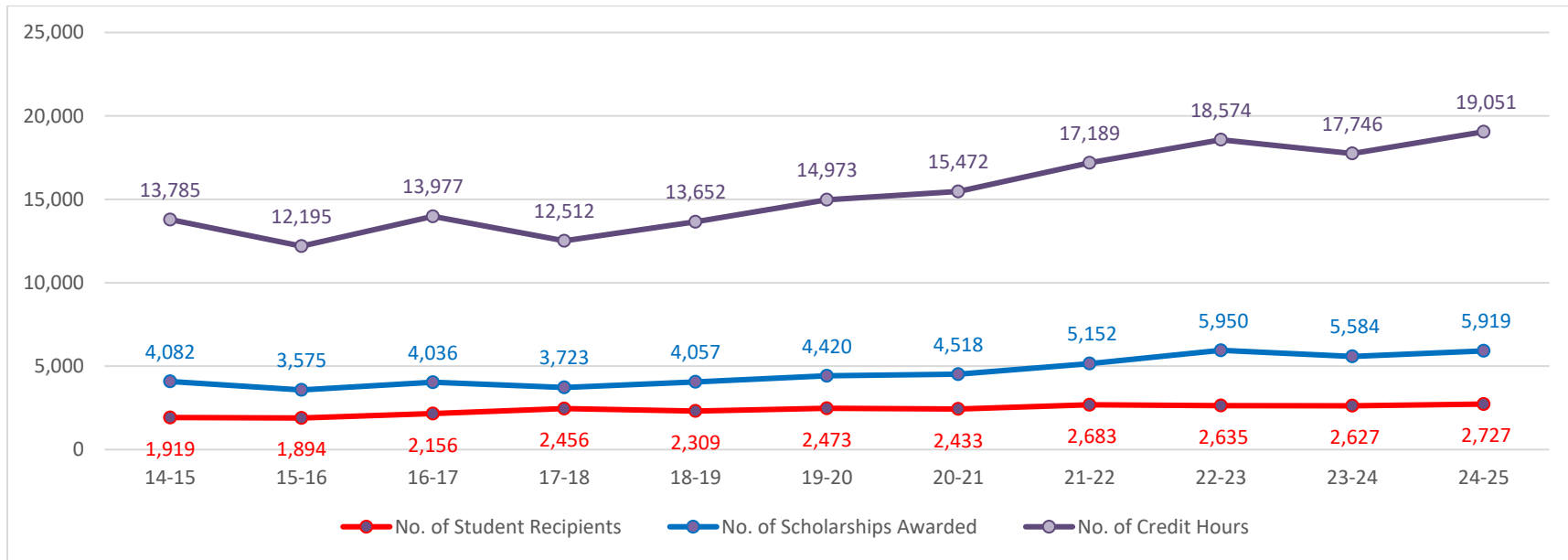
The ACE Scholarship allowed these high school students from low-income families to enroll in 19,051 credit hours of college course work. Seventy-seven percent of the grades received by these students were a B or better. (See page 10)

Total ACE Scholarships Funding & Awarded

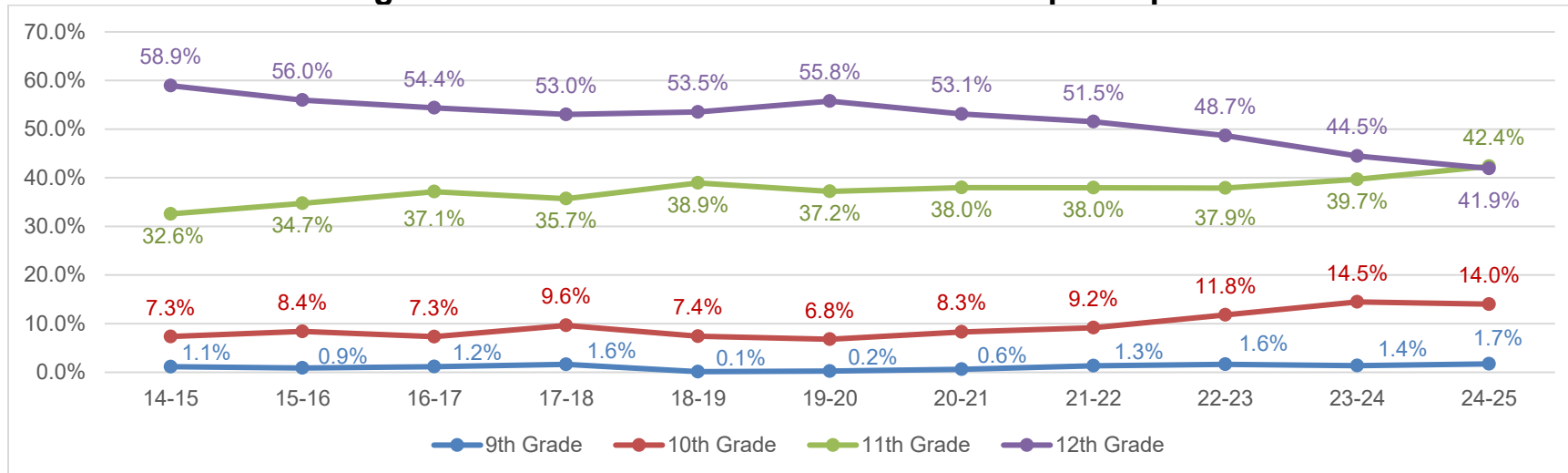


¹ In previous years the number of scholarships awarded to a student was limited each year based on available funding and an estimated number of students who would be applying. For 2024-25, due to the available funding and reduction in charges at the community colleges there was no limit to the number of courses available per student.

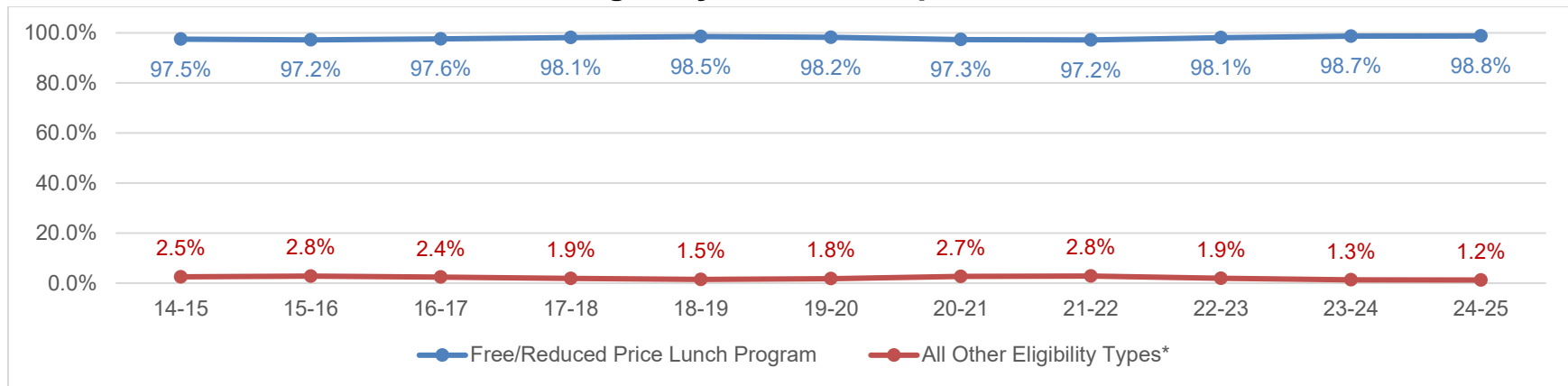
ACE Scholarship Recipients, Scholarships Awarded, and Credit Hours Taken



High School Grade Level of ACE Scholarship Recipients

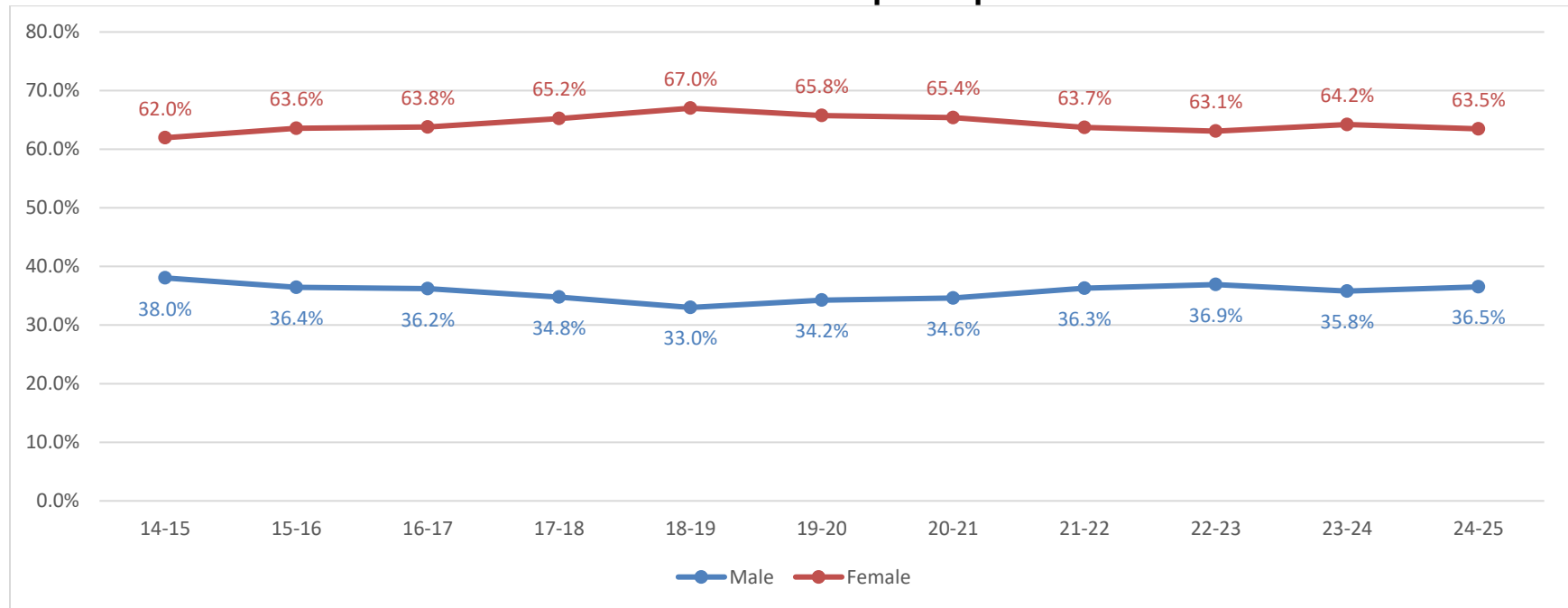


Eligibility of ACE Recipients

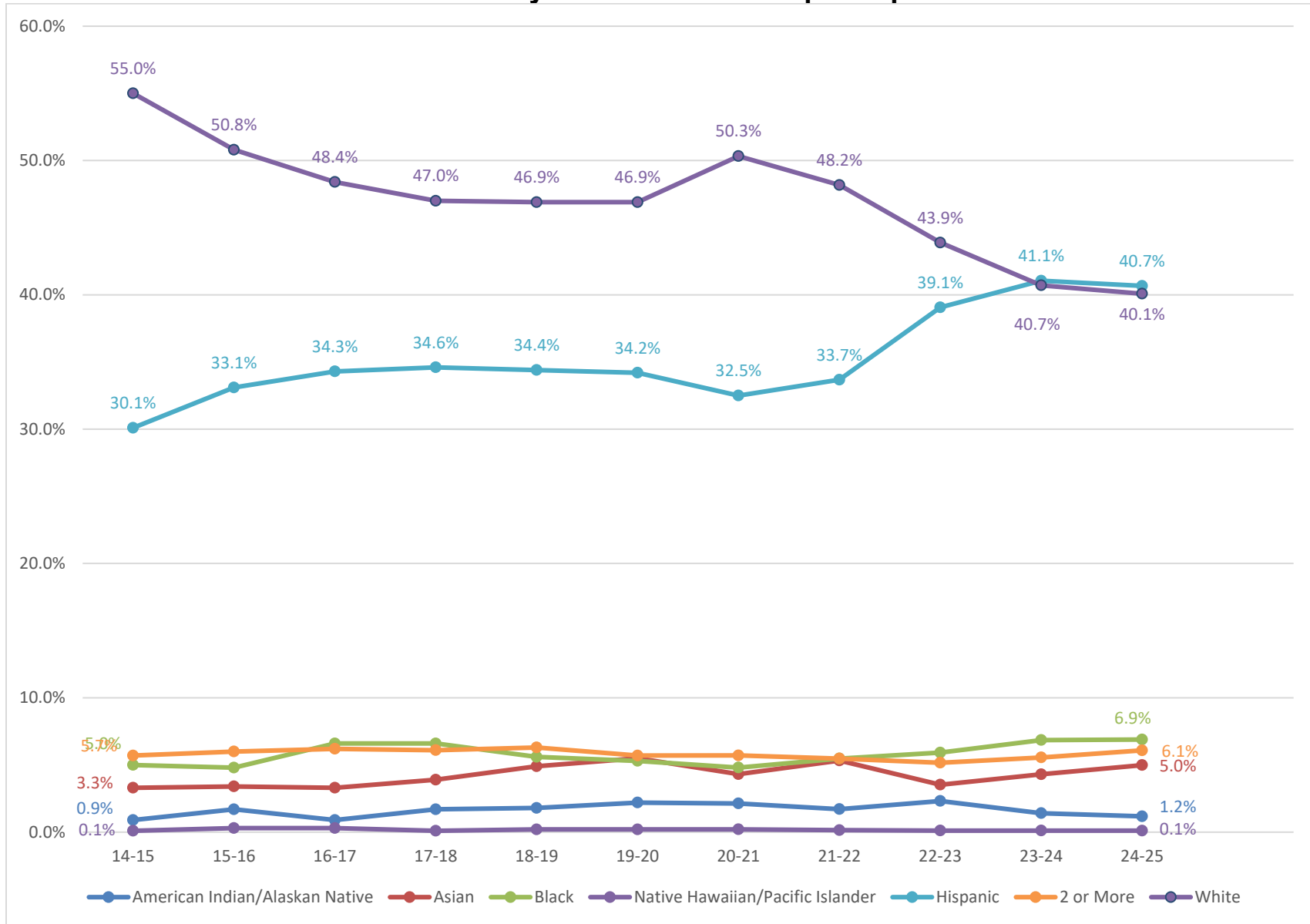


*All Other Eligibility Types Include: CPSE – Career Program of Study; SNAP – Supplemental Nutrition Assistance Program; SSI – Supplemental Security Income; TANF – Temporary Assistance for Needy Families; WIC – Special Supplemental Nutrition Program; Other Hardship

Sex of ACE Scholarship Recipients



Race/Ethnicity of ACE Scholarship Recipients



College Continuation Rates of ACE Scholarship Recipients

Since 2009, the Coordinating Commission has conducted research to determine how many of the high school seniors who receive ACE scholarships continue on to college compared to other low-income and non-low-income graduates of Nebraska's public high schools.

For this research, a college continuation rate is defined as the percentage of public high school graduates who were enrolled in college within one year of their high school graduation. For example, for the public high school seniors who received ACE scholarships during 2023-24, the college continuation rate is the percentage of these students who were enrolled in college any time between June 1, 2024, and May 31, 2025.

Using student records and summary reports from the Nebraska Department of Education (NDE) and enrollment records from the National Student Clearinghouse (NSC), the Commission calculates the college continuation rates by sex for the public high school seniors who were ACE scholarship recipients.

The Commission then compares the college continuation rates for the seniors who received ACE scholarships while attending public high schools to the college continuation rates for other low-income and non-low-income graduates of Nebraska's public high schools.

Low-income students are defined as students who are approved to receive free or reduced-price school lunches.

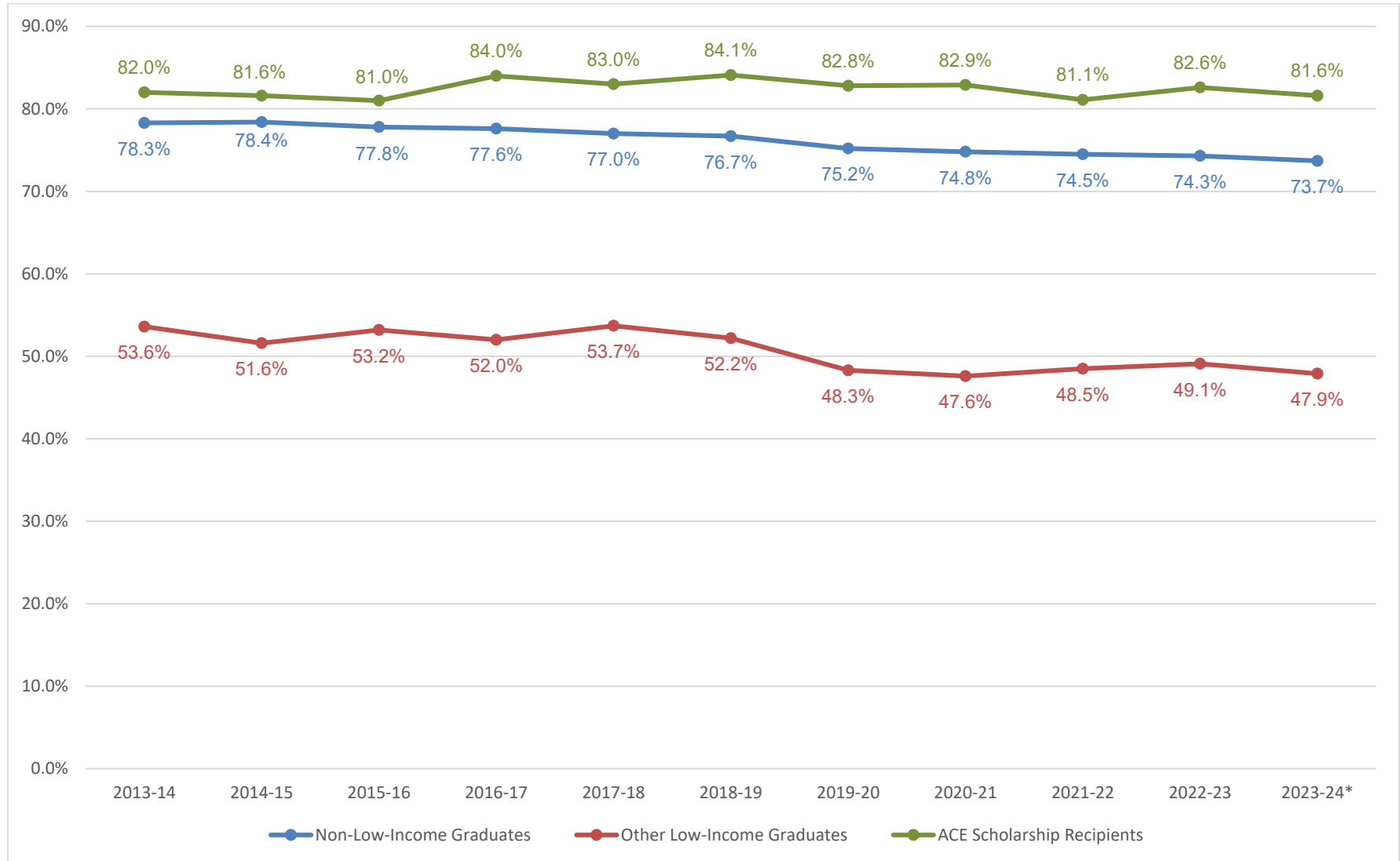
Non-low-income students are students who are not approved for free or reduced-price school lunches.¹

Since the Commission relies on college enrollment records from the NSC, students who continue to college at non-NSC-reporting institutions are classified as not continuing on to college. As a result, college continuation rates reported here are underreported to some degree.

Students who were homeschooled or attended nonpublic (private) high schools are not included in this phase of the research because the NDE does not have sufficient records for the Commission to compute college continuation rates for nonpublic high school students.

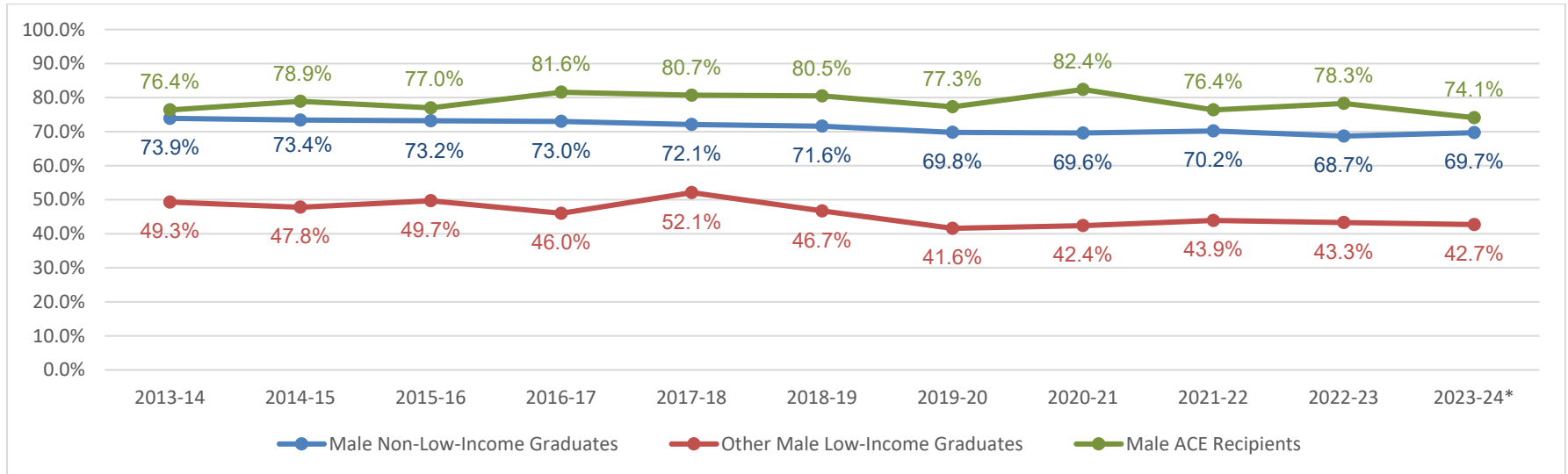
¹ Non-low-income students for this study include at least some students who live in low-income households but who did not apply for free or reduced-price school lunches. Since participation in the free or reduced-price school lunch program is the only indicant of household income in the student records maintained by the Nebraska Department of Education (NDE), low-income students in the non-low-income category cannot be identified and excluded for the purposes of analysis. Students who attend a high school that participates in the Community Eligibility Program are classified by NDE as low-income regardless of family income status.

Public High School College Continuation Rate

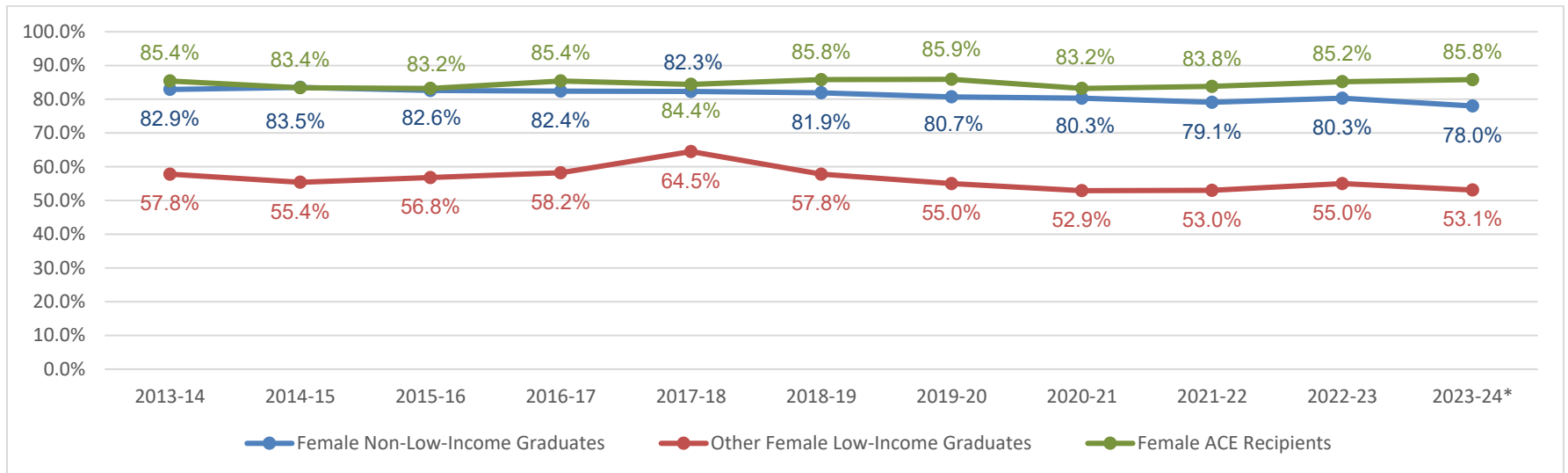


*2024 graduates would have filled out the 2024-25 Free Application for Federal Student Aid, which was the year the FAFSA was significantly delayed in being released. This may have been a contributing factor in the decrease in the college continuation rate.

Male Public High School College Continuation Rate



Female Public High School College Continuation Rate



2024-25 Access College Early Scholarship				
College	Amount Awarded	Number of Students	Number of Scholarships	Average per Scholarship
Bryan College of Health (BCH)	\$14,750.00	19	46	\$320.65
Central Community College (CCC)	\$118,129.00	525	1,219	\$96.14
Chadron State College (CSC)	\$10,008.00	40	47	\$212.94
Concordia University (CU)	\$2,460.00	7	10	\$246.00
Doane University (DU)	\$32,175.00	79	138	\$233.15
Little Priest Tribal College (LPTC)	\$3,240.00	6	6	\$540.00
Midland University (MU)	\$60,500.00	125	242	\$250.00
Mid-Plains Community College (MPCC)	\$47,302.80	121	314	\$150.65
NE College of Technical Agriculture (NCTA)	\$360.00	3	3	\$120.00
Nebraska Indian Community College (NICC)	\$32,640.00	14	65	\$502.15
Nebraska Wesleyan University (NWU)	\$258,628.00	448	779	\$332.00
Peru State College (PSC)	\$16,320.00	63	80	\$204.00
Southeast Community College (SCC)	\$86,214.08	306	642	\$134.29
St Gregory the Great	\$1,140.00	4	4	\$285.00
University of Nebraska at Kearney (UNK)	\$30,225.00	110	133	\$227.26
University of Nebraska-Lincoln (UNL)	\$2,640.00	5	8	\$330.00
University of Nebraska at Omaha (UNO)	\$307,011.91	694	1,164	\$263.76
Western Nebraska Community College (WNCC)	\$75,279.44	189	518	\$145.33
Wayne State College (WSC)	\$79,605.00	357	500	\$159.21

NOTE: Tuition and fee charges are set by each institution, so Average per Scholarship varies by institution.

NOTE 2: Number of students on the above and following charts do not total the number of student recipients of 2,727 on page 3 due to students taking classes at multiple institutions.

NOTE 3: Data related to colleges where the number of students in the above chart equaled five or less were masked in the Grades Earned per Course chart, the Sex Race/Ethnicity chart, and the Grade & Eligibility chart on the following pages.

NOTE 4: Metropolitan Community College and Northeast Community College are not included. High school students taking coursework through these colleges were not charged tuition and fees during the 2024-25 year.

2024-25 Access College Early Scholarship Grades Earned per Course

College	A+	A	A-	B+	B	B-	C+	C	C-	D+	D	D-	F	W	IP*	Hours^
BCH	12	12		6	5		3	5					1	2		91.5
CCC	96	475		153	236		65	91		12	25		48	18		3,857
CSC		29			9			3			2		3	1		154
CU		5	2	2			1									30
DU	15	38	17	8	20	16	4	12	2		4		2			429
LPTC		2			2			2								18
MU		106			66			48			19		3			772
MPCC	43	136		40	33		15	13		2	5		9	18		977
NCTA@																
NICC		29	10	9	6	2	3	2	2		2					192
NWU	71	278	52	80	137	26	29	33	7	15	17	4	14	16		2,726
PSC		44		2	24		2	8								272
SCC	118	179		118	84		41	37		14	11		28	12		1,939.5
St Gregory@																
UNK	22	35	13	13	16	7	9	6	1		3	1	3	2	2	403
UNL@																
UNO	90	399	91	66	277	49	37	88	7	10	32	4	4	9	1	3,729
WNCC	48	83	75	46	52	35	24	37	17	10	21	10	37	23		1,641
WSC		258	17	12	129	5	5	51	1		15		2	5		1,581

* Course work in progress

^ Total number of credit hours paid for by the scholarship

Data masked due to low numbers

2024-25 Access College Early Scholarship Sex and Race/Ethnicity

College	Female	Male	2 or More	American Indian/Alaskan Native	Asian	Black	Native Hawaiian/Pacific Islander	Hispanic	White
BCH	15	4			3	2		5	9
CCC	329	196	25	4	3	17	1	217	258
CSC	27	13	3	2	2			13	20
CU	5	2						1	6
DU	46	33	6		4	6		9	54
LPTC	2	4		4					2
MU	82	43	9	1	4	9		87	15
MPCC	83	38	7	3		5		14	92
NCTA@									
NICC	8	6		7					7
NWU	293	155	38	6	47	55	1	95	206
PSC	37	26	2			3	1	22	35
SCC	197	109	15	1	8	11		77	194
St Gregory@									
UNK	70	40	2					85	23
UNL@									
UNO	441	253	56	2	72	83	1	370	110
WNCC	115	74	8	2	3	2		82	92
WSC	234	123	17	5	5	11		211	108

@ Data masked due to low numbers

2024-25 Access College Early Scholarship Grade & Eligibility* Criteria

College	9 th	10 th	11 th	12 th	CPSE	F/R	Other Hardship	SNAP	SSI	TANF	WIC
BCH	1	1	13	4		18		1			
CCC		20	207	298		516	3	5			1
CSC		1	22	17		40					
CU		1	5	1		6		1			
DU	3	8	24	44		79					
LPTC			2	4		6					
MU			112	13		125					
MPCC	3	10	48	60		114	2	4			1
NCTA@											
NICC	1	1	4	8		14					
NWU	27	40	195	186		439	5	4			
PSC			31	32		63					
SCC		33	128	145		304	1	1			
St Gregory@											
UNK		5	59	46		108		2			
UNL@											
UNO	6	178	242	268		690	1	3			
WNCC		1	82	106		188		1			
WSC	6	84	165	102		356		1			

*CPSE – Career Program of Study; F/R – Free or Reduced-Price Lunch Program; SNAP – Supplemental Nutrition Assistance Program; SSI – Supplemental Security Income; TANF – Temporary Assistance for Needy Families; WIC – Special Supplemental Nutrition Program

@ Data masked due to low numbers

Access College Early 2024-25

Number of Scholarships Awarded by High School

College (number of high schools)
High School (number of students, number of scholarships)

BRYAN COLLEGE OF HEALTH (8)

CENTRAL CITY HIGH SCHOOL (1, 1)
HOME SCHOOL (1, 1)
LINCOLN EAST HIGH SCHOOL (1, 1)
LINCOLN HIGH SCHOOL (1, 2)
LINCOLN NORTH STAR HIGH SCHOOL (2, 6)
LINCOLN NORTHEAST HIGH SCHOOL (1, 1)
LINCOLN NORTHWEST HIGH SCHOOL (9, 31)
PIUS X HIGH SCHOOL (3, 3)

CENTRAL COMMUNITY COLLEGE (62)

ADAMS CENTRAL JR-SR HIGH SCH (17, 48)
ALMA HIGH SCHOOL (1, 4)
AMHERST HIGH SCHOOL (1, 1)
ARCADIA HIGH SCHOOL (5, 10)
AURORA HIGH SCHOOL (5, 15)
BLUE HILL HIGH SCHOOL (1, 1)
BOONE CENTRAL HIGH SCHOOL (2, 3)
CAMBRIDGE HIGH SCHOOL (3, 8)
CENTRAL CATHOLIC HIGH SCHOOL (1, 1)
CENTRAL CITY HIGH SCHOOL (9, 22)
CENTRAL VALLEY HIGH SCHOOL (3, 6)
CENTURA SECONDARY SCHOOL (1, 3)
CLARKSON JR-SR HIGH SCHOOL (5, 7)
COLUMBUS HIGH SCHOOL (39, 97)
COZAD HIGH SCHOOL (7, 11)
CROSS COUNTY HIGH SCHOOL (3, 9)
DAVID CITY SECONDARY SCHOOL (3, 9)
EAST BUTLER HIGH SCHOOL (3, 7)
ELGIN HIGH SCHOOL (2, 3)
ELM CREEK HIGH SCHOOL (5, 20)

ELWOOD HIGH SCHOOL (2, 2)
EUSTIS-FARNAM HIGH SCHOOL (1, 1)
FRANKLIN SECONDARY SCHOOL (11, 29)
FULLERTON HIGH SCHOOL (4, 11)
GIBBON HIGH SCHOOL (10, 27)
GOTHENBURG SECONDARY SCHOOL (1, 1)
GRAND ISLAND SENIOR HIGH SCH (66, 100)
HARVARD HIGH SCHOOL (4, 7)
HASTINGS SENIOR HIGH SCHOOL (17, 31)
HIGH PLAINS COMMUNITY HIGH SCH (3, 10)
HOLDREGE HIGH SCHOOL (2, 7)
HOWELLS-DODGE HIGH SCHOOL (3, 7)
HUMPHREY JR-SR HIGH SCHOOL (4, 15)
KEARNEY CATHOLIC HIGH SCHOOL (1, 2)
KEARNEY SR HIGH SCHOOL (25, 45)
KENESAW SECONDARY SCHOOL (1, 1)
LAKEVIEW HIGH SCHOOL (10, 22)
LEXINGTON HIGH SCHOOL (122, 263)
LITCHFIELD HIGH SCHOOL (3, 7)
MINDEN HIGH SCHOOL (1, 1)
NORTHWEST HIGH SCHOOL (12, 34)
ORD JR-SR HIGH SCHOOL (12, 41)
OVERTON HIGH SCHOOL (10, 16)
PALMER JUNIOR-SENIOR HIGH (5, 12)
PLEASANTON HIGH SCHOOL (8, 14)
RAVENNA SENIOR HIGH (4, 7)
RED CLOUD HIGH SCHOOL (7, 22)
RIVERSIDE HIGH SCHOOL (4, 5)
SANDY CREEK JR/SR HIGH SCHOOL (14, 68)
SCOTUS CENTRAL CATHOLIC (4, 12)
S-E-M JR/SR HIGH SCHOOL (8, 16)

CENTRAL COMMUNITY COLLEGE - cont.

SHELBY-RISING CITY HIGH SCHOOL (3, 19)
SHELTON HIGH SCHOOL (3, 4)
SILVER LAKE HIGH SCHOOL (2, 6)
SPALDING ACADEMY HIGH SCHOOL (1, 2)
ST CECILIA HIGH SCHOOL (1, 2)
ST EDWARD HIGH SCHOOL (1, 2)
ST PAUL HIGH SCHOOL (2, 9)
SUTTON SECONDARY SCHOOL (1, 4)
TWIN RIVER SR HIGH SCHOOL (1, 3)
WILCOX-HILDRETH HIGH SCHOOL (8, 23)
WOOD RIVER RURAL HIGH SCHOOL (7, 25)

CHADRON STATE COLLEGE (3)

CHADRON SENIOR HIGH SCHOOL (9, 14)
GORDON-RUSHVILLE HIGH SCHOOL (7, 8)
SCOTTSBLUFF SENIOR HIGH SCHOOL (24, 25)

CONCORDIA UNIVERSITY (2)

HOME SCHOOL (1, 2)
SEWARD HIGH SCHOOL (6, 8)

DOANE UNIVERSITY (10)

ALMA HIGH SCHOOL (8, 11)
BEATRICE HIGH SCHOOL (1, 1)
FREEMAN HIGH SCHOOL (1, 1)
LINCOLN HIGH SCHOOL (5, 7)
LINCOLN NORTH STAR HIGH SCHOOL (4, 5)
LINCOLN NORTHEAST HIGH SCHOOL (6, 6)
MILFORD HIGH SCHOOL (1, 1)
NORRIS HIGH SCHOOL (14, 27)
RIVERSIDE HIGH SCHOOL (14, 20)
SIDNEY HIGH SCHOOL (25, 59)

LITTLE PRIEST TRIBAL COLLEGE (2)

BANCROFT-ROSALIE JR/SR HIGH SCHOOL (1, 1)
HOMER HIGH SCHOOL (5, 5)

MIDLAND UNIVERSITY (4)

FREMONT SENIOR HIGH SCHOOL (1, 1)
OMAHA BRYAN HIGH SCHOOL (32, 65)
OMAHA BURKE HIGH SCHOOL (23, 37)
OMAHA SOUTH MAGNET HIGH SCHOOL (69, 139)

MID-PLAINS COMMUNITY COLLEGE (30)

ANSLEY HIGH SCHOOL (1, 1)
ARCADIA HIGH SCHOOL (1, 1)
BROKEN BOW HIGH SCHOOL (6, 16)
CALLAWAY HIGH SCHOOL (1, 3)
CHASE COUNTY HIGH SCHOOL (1, 6)
DUNDY CO STRATTON HIGH SCHOOL (11, 26)
EUSTIS-FARNAM HIGH SCHOOL (2, 3)
HAY SPRINGS HIGH SCHOOL (1, 2)
HAYES CENTER SECONDARY SCHOOL (1, 4)
HERSHEY HIGH SCHOOL (1, 3)
LEXINGTON HIGH SCHOOL (1, 1)
LITCHFIELD HIGH SCHOOL (1, 2)
MAXWELL HIGH SCHOOL (6, 9)
MAYWOOD HIGH SCHOOL (3, 9)
MC COOK SENIOR HIGH SCHOOL (4, 9)
MCPHERSON COUNTY SECONDARY SCHOOL (2, 3)
MULLEN HIGH SCHOOL (3, 5)
NORTH PLATTE HIGH SCHOOL (21, 71)
OGALLALA HIGH SCHOOL (4, 7)
PAXTON HIGH SCHOOL (10, 26)
PERKINS COUNTY HIGH SCHOOL (7, 39)
PLEASANTON HIGH SCHOOL (2, 2)
SANDHILLS HIGH SCHOOL (1, 5)
SARGENT HIGH SCHOOL (10, 14)
SOUTHWEST JR/SR HIGH SCHOOL (3, 9)
ST PATRICK'S JR-SR HIGH SCHOOL (1, 3)
STAPLETON HIGH SCHOOL (4, 8)
SUTHERLAND HIGH SCHOOL (3, 7)
THEDFORD HIGH SCHOOL (8, 19)
WAUNETA-PALISADE HIGH SCHOOL (1, 1)

NEBRASKA COLLEGE OF TECHNICAL AGRICULTURE (3)

ARCADIA HIGH SCHOOL (1, 1)
S-E-M JR/SR HIGH SCHOOL (1, 1)
WHEELER CENTRAL HIGH (1, 1)

NEBRASKA INDIAN COMMUNITY COLLEGE (2)

BANCROFT-ROSALIE JR/SR HIGH SCHOOL (13, 64)
HOMER HIGH SCHOOL (1, 1)

NEBRASKA WESLEYAN UNIVERSITY (51)

ALMA HIGH SCHOOL (3, 4)
BLAIR HIGH SCHOOL (1, 2)
BROWNELL TALBOT HIGH SCHOOL (1, 1)
CENTRAL VALLEY HIGH SCHOOL (3, 6)
COLUMBUS HIGH SCHOOL (7, 7)
CONESTOGA JR/SR HIGH SCHOOL (1, 2)
COZAD HIGH SCHOOL (1, 1)
DUNDY CO STRATTON HIGH SCHOOL (4, 7)
ELKHORN NORTH HIGH SCHOOL (3, 6)
ELKHORN SOUTH HIGH SCHOOL (1, 2)
FAIRBURY JR-SR HIGH SCHOOL (1, 1)
FILLMORE CENTRAL HIGH SCHOOL (2, 2)
FRANKLIN SECONDARY SCHOOL (4, 7)
GUARDIAN ANGELS CENTRAL CATHOLIC HS (2, 4)
HAMPTON HIGH SCHOOL (1, 1)
HASTINGS SENIOR HIGH SCHOOL (3, 6)
HAY SPRINGS HIGH SCHOOL (2, 2)
LAKEVIEW HIGH SCHOOL (2, 2)
LINCOLN CHRISTIAN JR-SR HIGH (3, 4)
LINCOLN EAST HIGH SCHOOL (27, 48)
LINCOLN HIGH SCHOOL (62, 119)
LINCOLN NORTH STAR HIGH SCHOOL (118, 278)
LINCOLN NORTHEAST HIGH SCHOOL (16, 20)
LINCOLN NORTHWEST HIGH SCHOOL (15, 15)
LINCOLN SOUTHEAST HIGH SCHOOL (23, 47)
LINCOLN SOUTHWEST HIGH SCHOOL (4, 5)
LINCOLN STANDING BEAR HIGH SCHOOL (9, 13)

MARIAN HIGH SCHOOL (2, 6)
MULLEN HIGH SCHOOL (4, 8)
NORRIS HIGH SCHOOL (1, 1)
NORTHEAST SECONDARY SCHOOL (5, 10)
OAKLAND-CRAIG SENIOR HIGH (1, 1)
PAPILLION-LA VISTA SENIOR HIGH (2, 2)
PAPILLION-LA VISTA SOUTH H S (2, 2)
PIUS X HIGH SCHOOL (10, 11)
PLATTSMOUTH HIGH SCHOOL (2, 2)
RIVERSIDE HIGH SCHOOL (2, 3)
RONCALLI CATHOLIC HIGH SCHOOL (2, 3)
S-E-M JR/SR HIGH SCHOOL (2, 2)
SEWARD HIGH SCHOOL (3, 3)
SIDNEY HIGH SCHOOL (17, 28)
SIOUX COUNTY HIGH SCHOOL (4, 5)
SOUTH SIOUX SENIOR HIGH SCHOOL (37, 37)
SOUTHERN VALLEY JR/SR HIGH (9, 16)
ST CECILIA HIGH SCHOOL (1, 1)
STUART HIGH SCHOOL (11, 11)
WAVERLY HIGH SCHOOL (4, 5)
WAYNE HIGH SCHOOL (3, 5)
WESTSIDE HIGH SCHOOL (2, 2)
WHEELER CENTRAL HIGH (2, 2)
WISNER-PILGER HIGH SCHOOL (1, 1)

PERU STATE COLLEGE (8)

AURORA HIGH SCHOOL (1, 1)
BEATRICE HIGH SCHOOL (11, 20)
CRETE HIGH SCHOOL (16, 17)
JOHNSON CO CENTRAL HIGH SCHOOL (2, 2)
MCCOOL JUNCTION JR-SR HIGH SCH (1, 1)
NORTH BEND CENTRAL JR/SR HIGH (4, 9)
SOUTHERN HIGH SCHOOL (2, 2)
YORK HIGH SCHOOL (26, 28)

SOUTHEAST COMMUNITY COLLEGE (33)

ASHLAND-GREENWOOD HIGH SCHOOL (4, 8)
AUBURN HIGH SCHOOL (1, 1)
BEATRICE HIGH SCHOOL (20, 22)
CRETE HIGH SCHOOL (62, 109)
DESHLER HIGH SCHOOL (1, 1)
EXETER-MILLIGAN HIGH SCHOOL (1, 3)
FAIRBURY JR-SR HIGH SCHOOL (19, 40)
FALLS CITY SENIOR HIGH (10, 34)
FREEMAN HIGH SCHOOL (9, 15)
JOHNSON-BROCK SECONDARY (8, 23)
LINCOLN NORTH STAR HIGH SCHOOL (17, 23)
LINCOLN NORTHWEST HIGH SCHOOL (3, 6)
LINCOLN SOUTHEAST HIGH SCHOOL (1, 1)
LINCOLN SOUTHWEST HIGH SCHOOL (2, 4)
LINCOLN STANDING BEAR HIGH SCHOOL (1, 1)
LOUISVILLE HIGH SCHOOL (4, 11)
MEAD HIGH SCHOOL (2, 8)
MILFORD HIGH SCHOOL (10, 19)
NORRIS HIGH SCHOOL (10, 28)
PALMYRA JR-SR HIGH SCHOOL (4, 9)
PAWNEE CITY SECONDARY SCHOOL (1, 8)
PIUS X HIGH SCHOOL (4, 10)
PLATTSMOUTH HIGH SCHOOL (8, 17)
RAYMOND CENTRAL JR/SR HIGH (6, 19)
SEWARD HIGH SCHOOL (11, 15)
SOUTHERN HIGH SCHOOL (4, 8)
STERLING HIGH SCHOOL (1, 1)
THAYER CENTRAL HIGH SCHOOL (9, 17)
TRI COUNTY JR-SR HIGH SCHOOL (13, 36)
WAHOO HIGH SCHOOL (4, 16)
WAVERLY HIGH SCHOOL (5, 10)
WILBER-CLATONIA HIGH SCHOOL (4, 9)
YORK HIGH SCHOOL (47, 110)

ST. GREGORY THE GREAT SEMINARY (1)

PIUS X HIGH SCHOOL (4, 4)

UNIVERSITY OF NEBRASKA - LINCOLN (2)

CHADRON SENIOR HIGH SCHOOL (3, 6)
LINCOLN STANDING BEAR HIGH SCHOOL (2, 2)

UNIVERSITY OF NEBRASKA AT KEARNEY (7)

CENTRAL CITY HIGH SCHOOL (5, 7)
CRETE HIGH SCHOOL (31, 41)
ELWOOD HIGH SCHOOL (1, 2)
GIBBON HIGH SCHOOL (5, 10)
KEARNEY SR HIGH SCHOOL (9, 14)
LEXINGTON HIGH SCHOOL (58, 58)
RONCALLI CATHOLIC HIGH SCHOOL (1, 1)

UNIVERSITY OF NEBRASKA AT OMAHA (28)

BELLEVUE EAST SR HIGH SCHOOL (4, 12)
BELLEVUE WEST SR HIGH SCHOOL (2, 3)
BENNINGTON SECONDARY SCHOOL (4, 9)
CREIGHTON PREPARATORY SCHOOL (1, 2)
ELKHORN HIGH SCHOOL (1, 2)
ELKHORN NORTH HIGH SCHOOL (3, 3)
ELKHORN SOUTH HIGH SCHOOL (1, 1)
HOME SCHOOL (2, 4)
MARIAN HIGH SCHOOL (3, 11)
MCCOOL JUNCTION JR-SR HIGH SCH (1, 1)
MERCY HIGH SCHOOL (4, 4)
MILLARD NORTH HIGH SCHOOL (7, 17)
MILLARD SOUTH HIGH SCHOOL (5, 11)
MILLARD WEST HIGH SCHOOL (9, 14)
OMAHA BRYAN HIGH SCHOOL (75, 130)
OMAHA BUENA VISTA HIGH SCHOOL (64, 97)
OMAHA BURKE HIGH SCHOOL (26, 59)
OMAHA CENTRAL HIGH SCHOOL (42, 81)
OMAHA NORTH MAGNET HIGH SCHOOL (30, 70)
OMAHA NORTHWEST MAGNET HIGH SCHOOL (97, 114)
OMAHA SOUTH MAGNET HIGH SCHOOL (237, 394)
OMAHA WESTVIEW HIGH SCHOOL (31, 41)

UNIVERSITY OF NEBRASKA AT OMAHA - cont.

PAPILLION-LA VISTA SENIOR HIGH (11, 21)
PAPILLION-LA VISTA SOUTH H S (8, 21)
PLATTSMOUTH HIGH SCHOOL (3, 3)
RALSTON HIGH SCHOOL (7, 14)
RONCALLI CATHOLIC HIGH SCHOOL (1, 4)
WESTSIDE HIGH SCHOOL (15, 21)

WAYNE STATE COLLEGE (30)

AURORA HIGH SCHOOL (1, 2)
BANCROFT-ROSALIE JR/SR HIGH SCHOOL (8, 8)
BOONE CENTRAL HIGH SCHOOL (11, 27)
COLUMBUS HIGH SCHOOL (3, 3)
CREIGHTON COMMUNITY HIGH SCH (4, 6)
DONIPHAN-TRUMBULL SECONDARY (3, 4)
ELGIN HIGH SCHOOL (1, 1)
ELKHORN VALLEY HIGH SCHOOL (1, 2)
FULLERTON HIGH SCHOOL (5, 13)
GRAND ISLAND SENIOR HIGH SCH (126, 175)
HARTINGTON-NEWCASTLE HIGH SCHOOL (2, 2)
HARVARD HIGH SCHOOL (1, 1)
LOGAN VIEW JR/SR HIGH SCHOOL (2, 5)
MINDEN HIGH SCHOOL (6, 6)
NORFOLK CATHOLIC HIGH SCHOOL (5, 7)
NORFOLK SENIOR HIGH SCHOOL (5, 9)
NORTHEAST SECONDARY SCHOOL (2, 5)
OAKLAND-CRAIG SENIOR HIGH (5, 13)
OVERTON HIGH SCHOOL (1, 1)

PIERCE JR/SR HIGH SCHOOL (1, 1)
PONCA HIGH SCHOOL (6, 10)
RIVERSIDE HIGH SCHOOL (7, 9)
SANDY CREEK JR/SR HIGH SCHOOL (2, 4)
SOUTH SIOUX SENIOR HIGH SCHOOL (122, 143)
SUTTON SECONDARY SCHOOL (1, 1)
TWIN RIVER SR HIGH SCHOOL (1, 1)
WAKEFIELD HIGH SCHOOL (3, 3)
WAUSA HIGH SCHOOL (1, 2)
WAYNE HIGH SCHOOL (11, 15)
WEST POINT-BEEMER HIGH SCHOOL (10, 21)

WESTERN NEBRASKA COMMUNITY COLLEGE (14)

ALLIANCE HIGH SCHOOL (2, 5)
BANNER COUNTY HIGH SCHOOL (4, 6)
BAYARD SECONDARY SCHOOL (1, 2)
BRIDGEPORT HIGH SCHOOL (8, 17)
CHADRON SENIOR HIGH SCHOOL (2, 2)
CRAWFORD HIGH SCHOOL (2, 3)
GARDEN COUNTY HIGH SCHOOL (2, 5)
GERING HIGH SCHOOL (43, 132)
GORDON-RUSHVILLE HIGH SCHOOL (3, 5)
HAY SPRINGS HIGH SCHOOL (3, 4)
MINATARE HIGH SCHOOL (4, 6)
MITCHELL SECONDARY SCHOOL (4, 11)
SCOTTSBLUFF SENIOR HIGH SCHOOL (99, 294)
SIDNEY HIGH SCHOOL (12, 26)

Access College Early 2024-25 Courses Taken by Scholarship Recipients

College (number of different subject areas)
Subject Area (number of scholarships)

BRYAN COLLEGE OF HEALTH (8)

Biomedical Sciences (2)
Health Professions (11)
Medical Terminology (15)
Nursing (7)
Nutrition (1)
Philosophy (7)
Psychology (2)
Sociology (1)

CENTRAL COMMUNITY COLLEGE (35)

Accounting (2)
Agriculture Sciences (11)
Adv Mfg Design Tech (14)
Art (2)
Auto Body (25)
Biological Sciences (51)
Business Admin (25)
Business Tech (2)
Chemistry (44)
Construction Tech (21)
Criminal Justice (6)
Economics (9)
English (241)
Entrepreneurship (2)
History (60)
Health Occupations (153)
Electronics (43)
Information Tech (3)
Media Arts (4)

Mathematics (194)
Medical Lab Tech (6)
Music (26)
Nutrition (11)
Physical Education (14)
Philosophy (4)
Pharmacy Tech (1)
Physics (5)
Political Science (16)
Personal Development (3)
Psychology (62)
Sociology (28)
Spanish (4)
Speech (97)
Theatre (9)
Welding Technology (22)

CHADRON STATE COLLEGE (5)

Education (1)
History (8)
Mathematics (17)
Marketing/Entrepreneurship (3)
Psychology (18)

CONCORDIA UNIVERSITY (3)

English (2)
Science (6)
Spanish (2)

DOANE UNIVERSITY (13)

Accounting (10)
Astronomy (1)
Business (2)
Chemistry (8)
Computing (14)
Public Speaking (14)
Economics (4)
Education (4)
English (65)
Entrepreneurship (3)
Mathematics (7)
Psychology (1)
Spanish (5)

LITTLE PRIEST TRIBAL COLLEGE (3)

Music (1)
Psychology (3)
Sociology (2)

MIDLAND UNIVERSITY (3)

Chemistry (48)
History (193)
Mathematics (1)

MID-PLAINS COMMUNITY COLLEGE (25)

Accounting (5)
Agriculture (3)
Art (2)
Biology (28)
Business (21)
Chemistry (2)
Criminal Justice (4)
English (70)
Engineering (2)
Entrepreneurship (1)
History (21)

Mathematics (46)
Medical Office (6)
Medical Lab Tech (4)
Music (2)
Nursing Assistant (8)
Philosophy (2)
Physics (3)
Political Science (8)
Psychology (33)
Sociology (8)
Spanish (4)
Speech (28)
Theatre (1)
Welding Technology (2)

NEBRASKA COLLEGE OF TECHNICAL AGRICULTURE (1)

Agribusiness Mngt Systems (3)

NEBRASKA INDIAN COMMUNITY COLLEGE (15)

Biology (2)
Business (12)
Early Childhood (2)
Economics (3)
Education (1)
English (13)
Geography (1)
History (9)
Health (1)
Native American Studies (5)
Physical Science (2)
Political Science (8)
Psychology (1)
Speech (4)
Welding Technology (1)

NEBRASKA WESLEYAN UNIVERSITY (21)

Accounting (2)
Art History (2)
Art (6)
Biology (18)
Business Admin (16)
Chemistry (58)
Communication Studies (1)
Economics (26)
English (210)
Geography (27)
Health & Human Performance (1)
History (180)
Mathematics (75)
French (12)
German (4)
Spanish (39)
Physics (1)
Political Science (32)
Psychology (60)
Religion (3)
Sociology (6)

PERU STATE COLLEGE (6)

Biology (18)
English (15)
Mathematics (24)
Psychology (3)
Speech (19)
Statistics (1)

SOUTHEAST COMMUNITY COLLEGE (27)

Accounting (2)
Agriculture (17)
Automotive Tech (1)
Bioscience (8)
Business (22)

Chemistry (8)
Communication Studies (52)
Criminal Justice (21)
Design & Drafting Tech (2)
Early Childhood (10)
Economics (8)
Education (5)
English (119)
Entrepreneurship (11)
Culinary & Hospitality (15)
History (14)
Health (54)
Human Services (1)
Computer Information Tech (4)
Mathematics (121)
Medical Assisting (29)
Music (9)
Political Science (9)
Psychology (50)
Sociology (16)
Truck Driver Training (2)
Welding Technology (32)

ST. GREGORY THE GREAT SEMINARY (1)

Humanities (4)

UNIVERSITY OF NEBRASKA - LINCOLN (5)

Art History (1)
Architecture (1)
Economics (2)
Sociology (2)
Textiles, Merch, & Fashion Design (1)

UNIVERSITY OF NEBRASKA AT KEARNEY (6)

Art (1)
Biology (4)
English (16)
History (31)
Political Science (1)
Spanish (80)

UNIVERSITY OF NEBRASKA AT OMAHA (31)

Accounting (1)
Art (8)
Aviation (9)
Biology (71)
Black Studies (1)
Biomechanics (25)
Information Science & Tech (46)
Computer Science (5)
Cyber Security (1)
Economics (2)
English (185)
French (3)
Geography (169)
German (1)
Health & Kinesiology (13)
History (116)
Kinesiology (2)
Mathematics (114)
Management (4)
Marketing (1)
Public Health & Behavior (14)
Philosophy (1)
Physics (41)
Political Science (137)
Psychology (42)
Religion (3)
Sociology (1)
Spanish (128)

Teacher Education (18)
Theatre (1)
Women's & Gender Studies (1)

WAYNE STATE COLLEGE (18)

Business (9)
Chemistry (2)
Computer Information Systems (6)
Communication Arts (55)
Computer Science (2)
Earth Science (11)
Education (94)
English (36)
History (29)
Health Science (7)
Mathematics (89)
Music (3)
Physical Science (8)
Physics (2)
Political Science (14)
Psychology (6)
Sociology (2)
Spanish (125)

WESTERN NEBRASKA COMMUNITY COLLEGE (32)

Accounting (3)
Advanced Mfg Tech (2)
Art (1)
Collision Repair Tech (21)
Automotive Tech (26)
Biological Sciences (32)
Business Admin (7)
Chemistry (8)
Criminal Justice (30)
Diesel, Truck & Heavy Equip Tech (16)
Economics (2)
Education (4)

WESTERN NEBRASKA COMMUNITY COLLEGE - cont.

Emergency Medical Services (1)
English (58)
Engineering (10)
History (27)
Health Occupations (86)
Humanities (3)
Human Services (13)
Information Tech (8)
Nursing (7)
Mathematics (31)

Music (2)
Physics (3)
Political Science (3)
Personal Development (7)
Psychology (30)
Sociology (2)
Spanish (27)
Speech (3)
Theatre (3)
Welding Technology (42)