



**NEBRASKA'S**  
COORDINATING COMMISSION  
FOR POSTSECONDARY EDUCATION

## **ACCESS COLLEGE EARLY SCHOLARSHIP 2023-24 YEAR-END REPORT**

**Statutory Authority Neb. Rev. Stat. § 85-2106**

**Approved by the Commission  
September 13, 2024**

## COMMISSIONERS

**Dr. Paul Von Behren, Chair**  
*Fremont, District 3*

**Tim Daniels, Vice-Chair**  
*Omaha, Member-at-Large*

**Dr. Deborah Frison**  
*Omaha, District 2*

**Dr. LeDonna Griffin**  
*Omaha, Member-at-Large*

**Dr. Dennis Headrick**  
*Lincoln, District 1*

**Mary Lauritzen**  
*West Point, Member-at-Large*

**Dannika Nelson**  
*Oakland, Member-at-Large*

**Molly O'Holleran**  
*North Platte, District 6*

**Tamara Weber**  
*Columbus, District 5*

**W. Scott Wilson**  
*Plattsmouth, Member-at-Large*

## STAFF

**Dr. Michael Baumgartner**  
*Executive Director*

**Dr. Kathleen Fimple**  
*Academic Programs Officer*

**Jill Heese**  
*Research Coordinator*

**Kadi Lukesh**  
*Bookkeeper, Budget Coordinator  
& Office Manager*

**J. Ritchie Morrow**  
*Financial Aid Officer*

**Helen Pope**  
*Executive Assistant*

**Matthew Roque**  
*Capital Project & Financial  
Analyst*

**Kelcy Sass**  
*Program Manager*

**Celeste Thompson**  
*Administrative Assistant*

**Gary Timm**  
*Chief Finance & Administrative  
Officer*

**Joe Velasquez**  
*Database Manager*

**Coordinating Commission for Postsecondary Education**  
140 N. 8th Street, P.O. Box 95005, Lincoln, NE 68509-5005  
Phone: (402) 471-2847

**The Commission's reports are available online at [ccpe.nebraska.gov/reports](https://ccpe.nebraska.gov/reports)**

## Access College Early (ACE) Scholarship Program

Authorized by the Nebraska Legislature in 2007, the Access College Early (ACE) Scholarship Program pays tuition and mandatory fees for qualified, low-income high school students to enroll in college courses from Nebraska colleges or universities, either through dual enrollment or early enrollment agreements with these institutions. High school students may apply for funding under this program by completing the ACE Student Application, which is reviewed by the Coordinating Commission for award consideration.

To qualify for the scholarship, the student or student's family must be approved to participate in one of the federal need-based government programs listed below, have experienced an extreme hardship that affects family income, or be participating in a designated Career Education program as established by the Nebraska Department of Education.

- Free or Reduced-Price Lunch Program
- Supplemental Security Income
- Temporary Assistance to Needy Families (TANF)
- Supplemental Nutrition Assistance Program (SNAP)
- Special Supplemental Assistance Program (WIC)

The objective of the ACE program is to encourage well-prepared high school students from low-income families to enroll in college courses. High school students who are awarded an ACE scholarship to complete college courses while in high school can decrease their time to graduation and consequently the cost of a degree. However, students must pay to take advantage of these college course opportunities to receive college credit that can jumpstart their college careers. For students who are economically disadvantaged, the financial constraints are great.

Research shows that high school students who take college courses while in high school remain in school and graduate at higher rates, enroll in college at increased rates, and return for their college sophomore years at higher rates. In Nebraska, public high school ACE recipients are 32.6 percentage points more likely to go on to college than other public high school students from low-income families.

As can be seen from the charts starting on page 7, public high school students who are ACE scholarship recipients continue on to college at a much greater rate than public high school students from low-income families that do not receive ACE scholarships. In fact, public high school ACE scholarship recipients continue on to college at a higher rate than public high school students from non-low-income families.

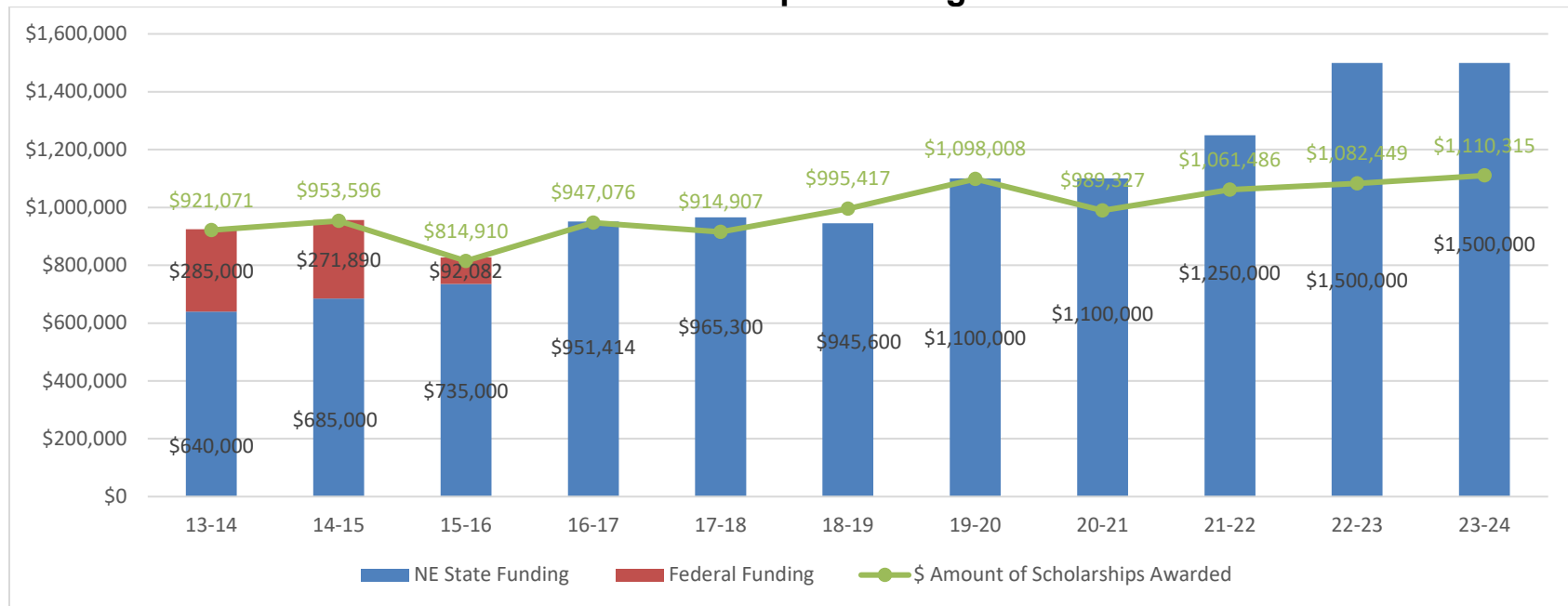
## Distribution of the 2023-24 Access College Early Scholarship

The Access College Early (ACE) Scholarship pays the tuition and mandatory fees of eligible Nebraska high school students taking dual-enrollment and early-admit college courses at participating Nebraska colleges and universities<sup>1</sup>. For 2023-24 the ACE Scholarship program was funded with \$1,500,000 General funds appropriated by the Legislature.

Nebraska colleges and universities enrolled 2,627 low-income, Nebraska high school students from 192 high schools who received 5,584 ACE Scholarships in 2023-24. The total amount awarded was \$1,110,314.55, with the average award per scholarship equaling \$199.12.

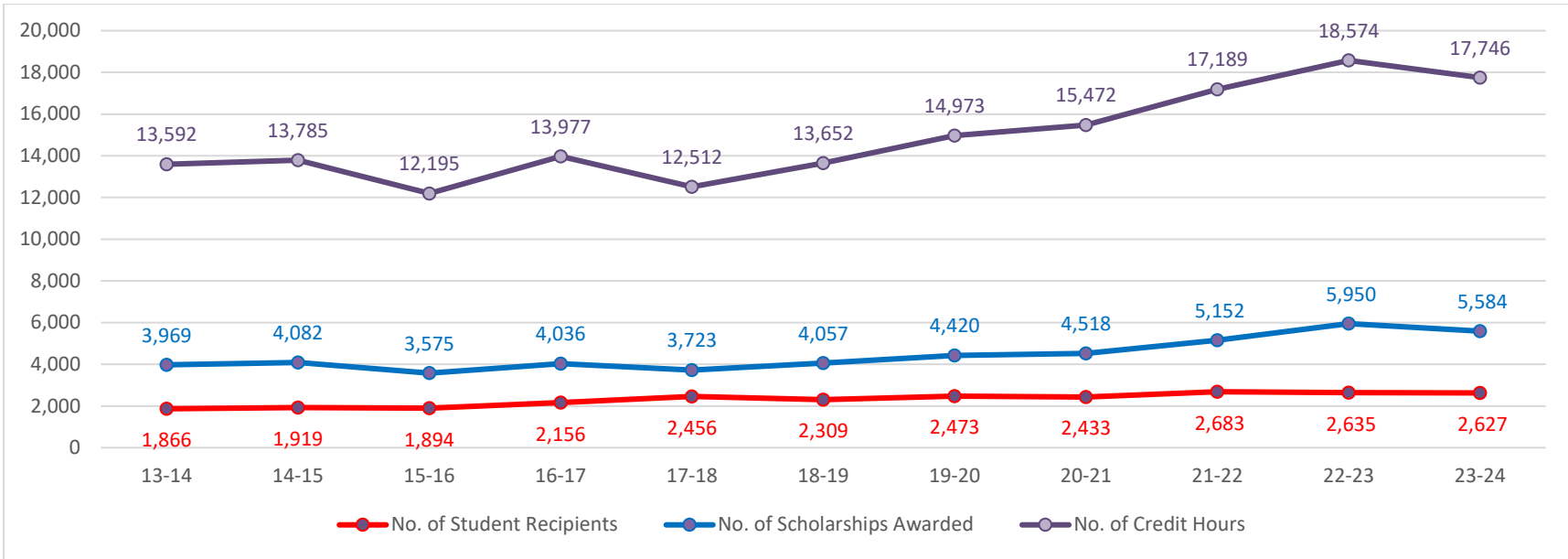
The ACE Scholarship allowed these high school students from low-income families to enroll in 17,746 credit hours of college course work. Seventy-five percent of the grades received by these students were a B or better. (See page 10)

### Total ACE Scholarships Funding & Awarded

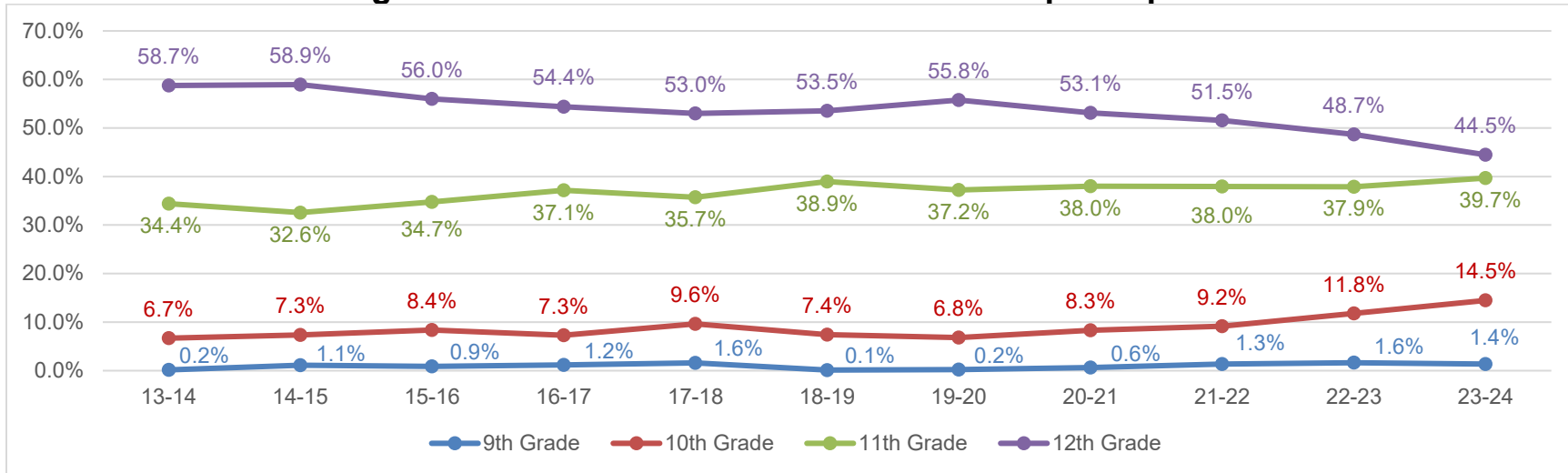


<sup>1</sup> In previous years the number of scholarships awarded to a student was limited each year based on available funding and an estimated number of students who would be applying. For 2023-24 due to the available funding and reduction in charges at the community colleges there was no limit to the number of courses available per student.

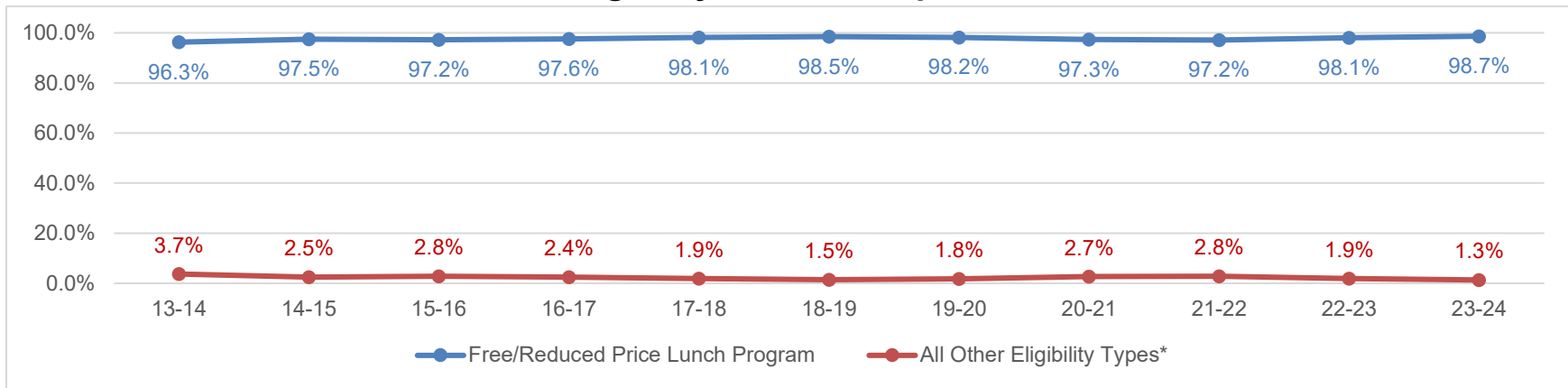
## ACE Scholarship Recipients, Scholarships Awarded, and Credit Hours Taken



## High School Grade Level of ACE Scholarship Recipients

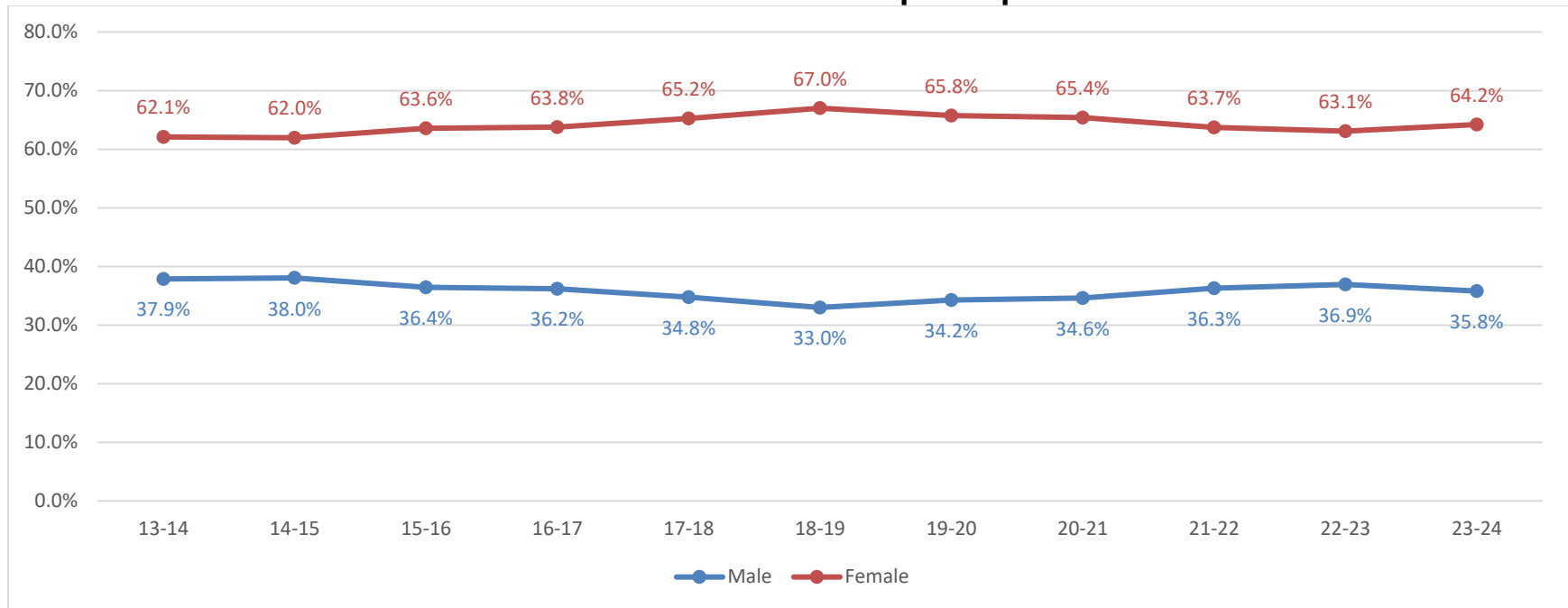


### Eligibility of ACE Recipients

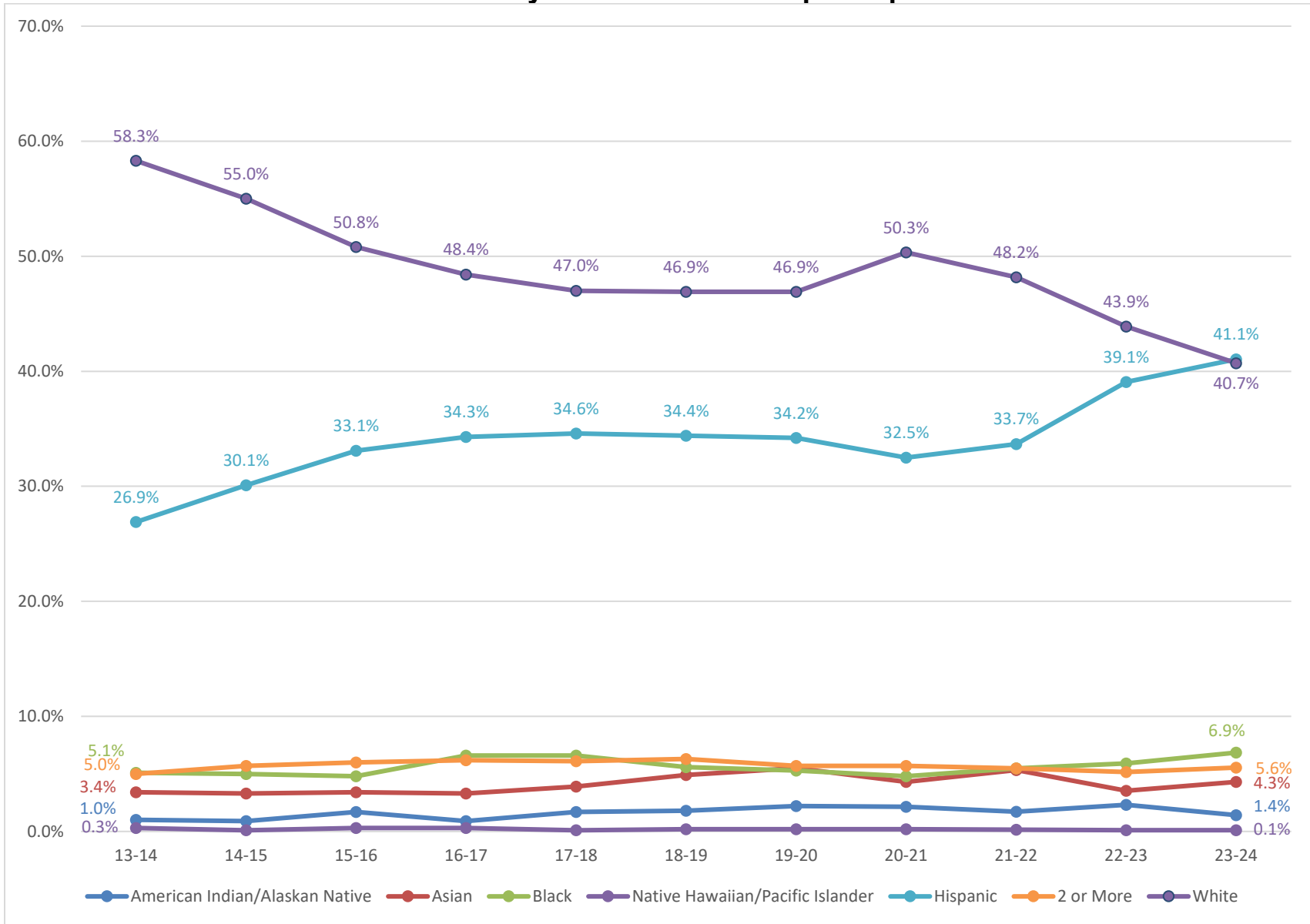


\*All Other Eligibility Types Include: CPSE – Career Program of Study; SNAP – Supplemental Nutrition Assistance Program; SSI – Supplemental Security Income; TANF – Temporary Assistance for Needy Families; WIC – Special Supplemental Nutrition Program; Other Hardship

### Gender of ACE Scholarship Recipients



### Race/Ethnicity of ACE Scholarship Recipients



## College Continuation Rates of ACE Scholarship Recipients

Since 2009, the Coordinating Commission has conducted research to determine how many of the high school seniors who receive ACE scholarships continue on to college compared to other low-income and non-low-income graduates of Nebraska's public high schools.

For this research, a college continuation rate is defined as the percentage of public high school graduates who were enrolled in college within one year of their high school graduation. For example, for the public high school seniors who received ACE scholarships during 2019-20, the college continuation rate is the percentage of these students who were enrolled in college any time between June 1, 2020, and May 31, 2021.

Using student records and summary reports from the Nebraska Department of Education (NDE) and enrollment records from the National Student Clearinghouse (NSC), the Commission calculates the college continuation rates by gender for the public high school seniors who were ACE scholarship recipients.

The Commission then compares the college continuation rates for the seniors who received ACE scholarships while attending public high schools to the college continuation rates for other low-income and non-low-income graduates of Nebraska's public high schools.

Low-income students are defined as students who are approved to receive free or reduced-price school lunches.

Non-low-income students are students who are not approved for free or reduced-price school lunches.<sup>1</sup>

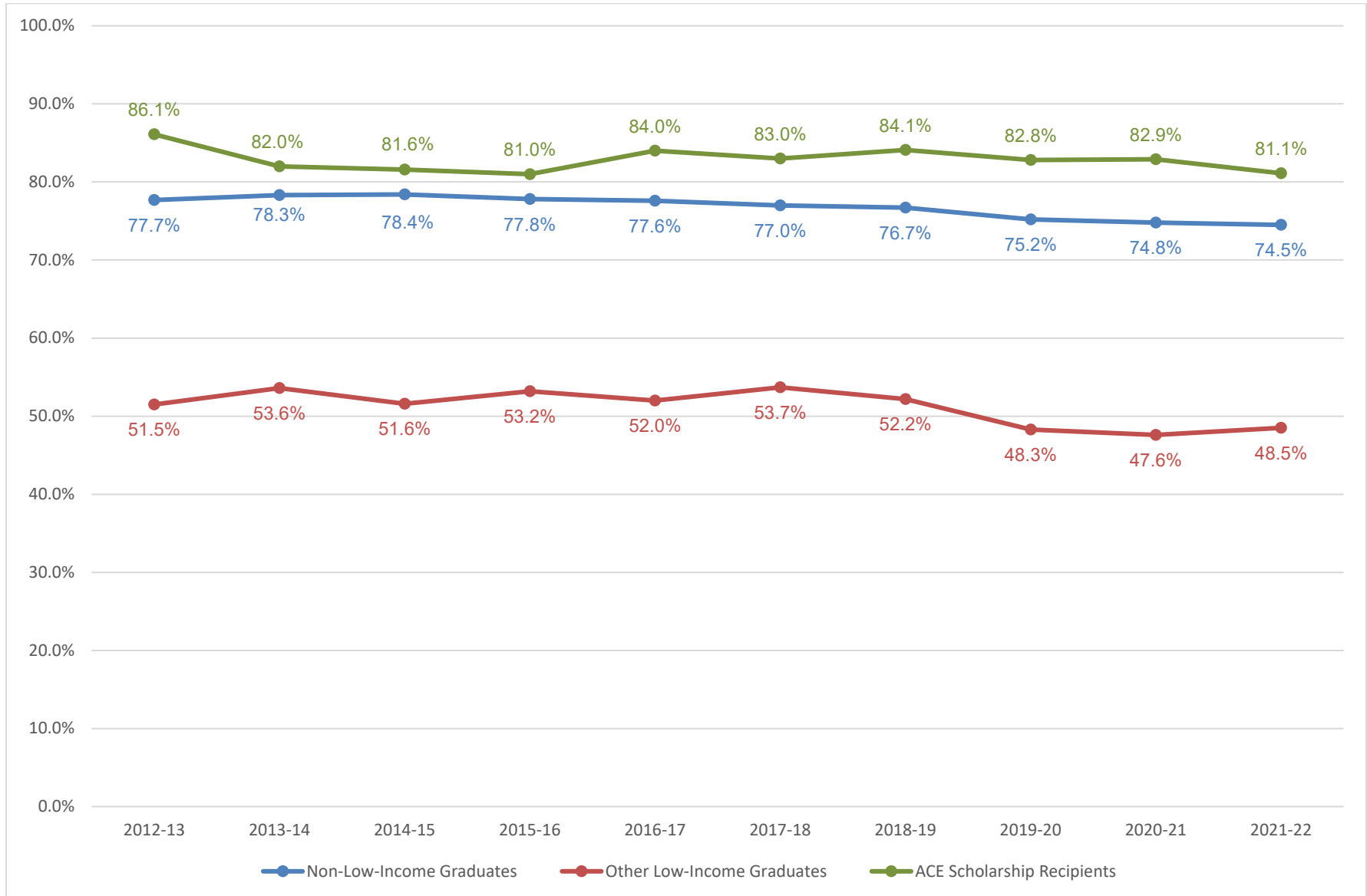
Since the Commission relies on college enrollment records from the NSC, students who continue to college at non-NSC-reporting institutions are classified as not continuing on to college. As a result, college continuation rates reported here are underreported to some degree.

Students who were homeschooled or attended nonpublic (private) high schools are not included in this phase of the research because the NDE does not have sufficient records for the Commission to compute college continuation rates for nonpublic high school students.

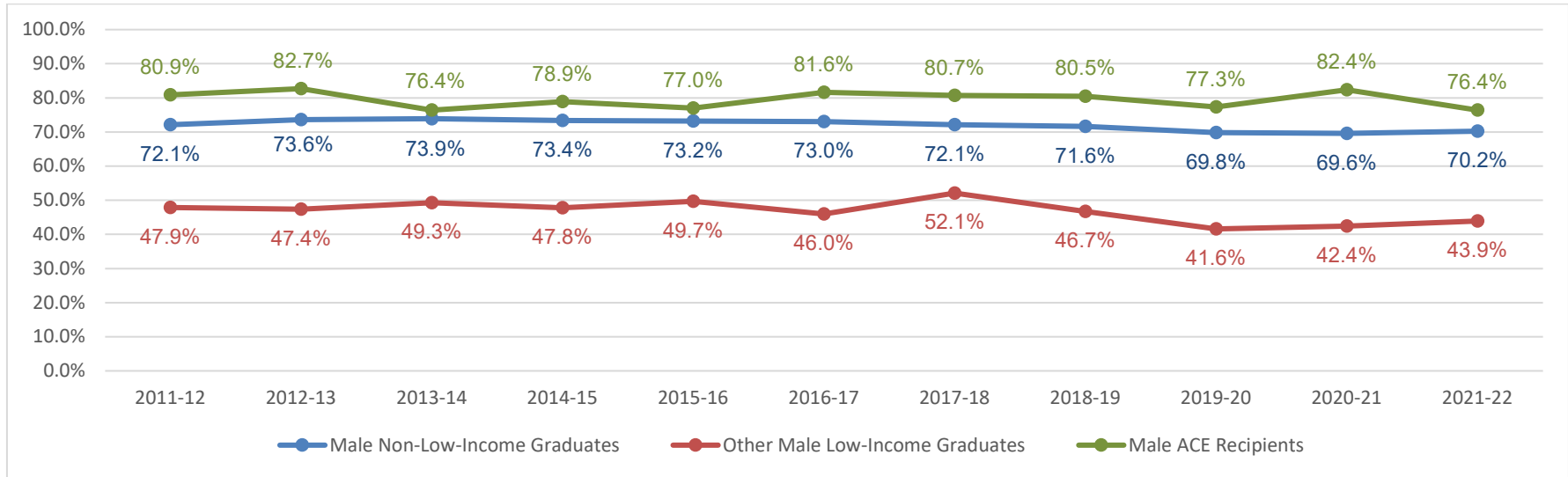
<sup>1</sup> Non-low-income students for this study include at least some students who live in low-income households but who did not apply for free or reduced-price school lunches. Since participation in the free or reduced-price school lunch program is the only indicator of household income in the student records maintained by the Nebraska Department of Education (NDE), low-income students in the non-low-income category cannot be identified and excluded for the purposes of analysis. Students who attend a high school that participates in the Community Eligibility Program are classified by NDE as low-income regardless of family income status.



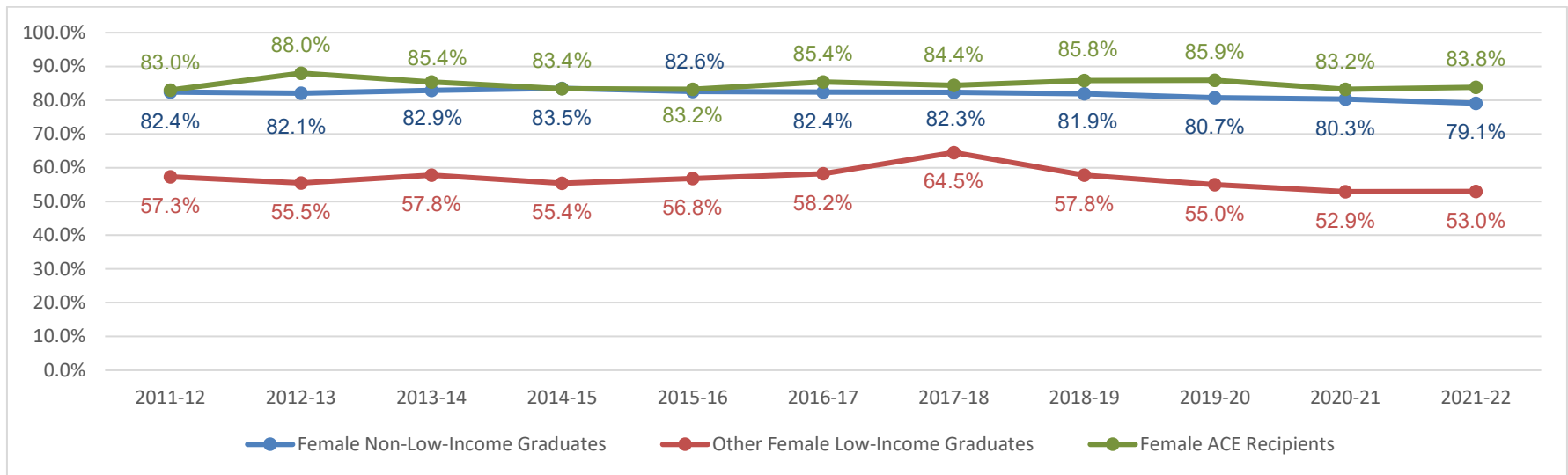
## Public High School College Continuation Rate



## Male Public High School College Continuation Rate



## Female Public High School College Continuation Rate



## 2023-24 Access College Early Scholarship

College	Amount Awarded	Number of Students	Number of Scholarships	Average per Scholarship
Bryan College of Health (BCH)	\$10,750.00	13	29	\$370.68
Central Community College (CCC)	\$113,878.00	574	1,223	\$93.11
Chadron State College (CSC)	\$20,643.45	44	64	\$322.55
Concordia University (CU)	\$6,020.00	12	22	\$273.64
Doane University (DU)	5,025.00	22	22	\$228.41
Little Priest Tribal College (LPTC)	\$6,120.00	10	12	\$510.00
Midland University (MU)	\$43,750.00	111	175	\$250.00
Mid-Plains Community College (MPCC)	\$39,556.00	95	275	\$143.84
NE College of Technical Agriculture (NCTA)	\$216.00	1	1	\$216.00
Nebraska Indian Community College (NICC)	\$30,090.00	19	61	\$493.28
Nebraska Wesleyan University (NWU)	\$254,537.50	471	775	\$328.44
Peru State College (PSC)	\$15,720.00	56	81	\$194.07
Southeast Community College (SCC)	\$66,846.24	211	475	\$140.73
St Gregory the Great	855.00	3	3	\$285.00
University of Nebraska at Kearney (UNK)	\$18,000.00	66	80	\$225.00
University of Nebraska-Lincoln (UNL)	\$330.00	1	1	\$330.00
University of Nebraska at Omaha (UNO)	\$306,968.87	667	1,148	\$267.39
Western Nebraska Community College (WNCC)	\$74,935.49	185	508	\$147.51
Wayne State College (WSC)	\$97,069.00	408	623	\$155.81

NOTE: Tuition and fee charges are set by each institution, so Average per Scholarship varies by institution.

NOTE 2: Number of students on the above and following charts do not total the number of student recipients of 2,627 on page 3 due to students taking classes at multiple institutions.

NOTE 3: Data related to colleges where the number of students in the above chart equaled five or less were masked in the Grades Earned per Course chart, the Gender Race/Ethnicity chart, and the Grade & Eligibility chart on the following pages.

NOTE 4: Metropolitan Community College and Northeast Community College are not included. High school students taking coursework through the college were not charged tuition and fees during the 2023-24 year.

**2023-24 Access College Early Scholarship  
Grades Earned per Course**

<b>College</b>	<b>A+</b>	<b>A</b>	<b>A-</b>	<b>B+</b>	<b>B</b>	<b>B-</b>	<b>C+</b>	<b>C</b>	<b>C-</b>	<b>D+</b>	<b>D</b>	<b>D-</b>	<b>F</b>	<b>W</b>	<b>IP*</b>	<b>Hours^</b>
BCH	6	6		5	4		4	2		2						69
CCC	73	447	1	140	273		62	103		12	30		46	36		3,781
CSC		35			15			9			2		2	1		209
CU		10	5	1	3	1	1	2								67
DU	3	12	3	1	2						1					67
LPTC		5			4						2		1			34
MU		89			38			39			8			1		540
MPCC	35	100		34	44		11	19		1	4		10	14	6	863
NCTA@																
NICC		20	6	6	8	3	6	3	4		3		2			177
NWU	78	228	62	96	142	29	46	48	5	12	10	1	8	10		2,669
PSC		58		2	15		3	2			1					262
SCC	96	131		83	58		28	36		7	11		13	15		1,467
St Gregory@																
UNK	32	15	14	11	1	1		5				1				269
UNL@																
UNO	50	372	53	82	329	32	35	127	15	5	26	4	4	6	8	3,630
WNCC	53	88	46	39	67	30	32	41	18	9	21	16	38	9	1	1,646
WSC		244	12	16	154	14	8	97	5	2	41	4	18	8		1,981

\* Course work in progress

^ Total number of credit hours paid for by the scholarship

@ Data masked due to low numbers

**2023-24 Access College Early Scholarship  
Gender and Race/Ethnicity**

<b>College</b>	<b>Female</b>	<b>Male</b>	<b>2 or More</b>	<b>American Indian/Alaskan Native</b>	<b>Asian</b>	<b>Black</b>	<b>Native Hawaiian/Pacific Islander</b>	<b>Hispanic</b>	<b>White</b>
BCH	11	2	1			2		4	6
CCC	351	223	32	3	4	27		245	263
CSC	23	21	2	4				10	28
CU	7	5				1			11
DU	14	8	1					3	18
LPTC	6	4		5					5
MU	68	43	9		1	8	1	75	17
MPCC	70	25	6			3		6	80
NCTA@									
NICC	9	10		9					10
NWU	307	164	32	5	45	48	1	101	239
PSC	41	15	2			1		11	42
SCC	131	80	10	2	5	6	1	31	156
St Gregory@									
UNK	34	32	2		2			52	10
UNL@									
UNO	442	225	44	4	56	72		374	117
WNCC	119	66	4	5	3	2		83	88
WSC	275	133	16	10	6	28		231	117

@ Data masked due to low numbers

**2023-24 Access College Early Scholarship  
Grade & Eligibility\* Criteria**

<b>College</b>	<b>9<sup>th</sup></b>	<b>10<sup>th</sup></b>	<b>11<sup>th</sup></b>	<b>12<sup>th</sup></b>	<b>CPSE</b>	<b>F/R</b>	<b>Other Hardship</b>	<b>SNAP</b>	<b>SSI</b>	<b>TANF</b>	<b>WIC</b>
BCH	1		6	6		12		1			
CCC		17	248	309		568	1	4	1		
CSC			25	19		44					
CU	1	1		10		9	2	1			
DU	3	3	4	12		22					
LPTC		1	5	4		10					
MU		1	103	7		109		1	1		
MPCC	1	9	34	51		93		2			
NCTA@											
NICC		5	4	10		19					
NWU	14	50	182	225		468		1	2		
PSC			24	32		56					
SCC		16	79	116		208	1	2			
St Gregory@											
UNK		3	35	28		66					
UNL@											
UNO	7	156	242	262		656	4	6	1		
WNCC		4	81	100		185					
WSC	8	116	140	144		405		2	1		

\*CPSE – Career Program of Study; F/R – Free or Reduced-Price Lunch Program; SNAP – Supplemental Nutrition Assistance Program; SSI – Supplemental Security Income; TANF – Temporary Assistance for Needy Families; WIC – Special Supplemental Nutrition Program

@ Data masked due to low numbers

## Access College Early 2023-24 Number of Scholarships Awarded by High School

College (number of high schools)  
High School (number of students, number of scholarships)

### **BRYAN COLLEGE OF HEALTH (5)**

LINCOLN HIGH SCHOOL (1, 1)  
LINCOLN NORTHEAST HIGH SCHOOL (2, 3)  
LINCOLN NORTHWEST HIGH SCHOOL (8, 23)  
LINCOLN SOUTHEAST HIGH SCHOOL (1, 1)  
SYRACUSE-DUNBAR-AVOCA HIGH SCHOOL (1, 1)

### **CENTRAL COMMUNITY COLLEGE (60)**

ADAMS CENTRAL JR-SR HIGH SCH (13, 48)  
ALMA HIGH SCHOOL (4, 5)  
ARAPAHOE HIGH SCHOOL (2, 2)  
ARCADIA HIGH SCHOOL (3, 9)  
AURORA HIGH SCHOOL (6, 8)  
BLUE HILL HIGH SCHOOL (1, 2)  
BOONE CENTRAL HIGH SCHOOL (2, 2)  
CAMBRIDGE HIGH SCHOOL (1, 5)  
CENTRAL CATHOLIC HIGH SCHOOL (2, 2)  
CENTRAL CITY HIGH SCHOOL (11, 29)  
CENTRAL VALLEY HIGH SCHOOL (9, 26)  
CLARKSON JR-SR HIGH SCHOOL (5, 6)  
COLUMBUS HIGH SCHOOL (31, 81)  
COZAD HIGH SCHOOL (2, 2)  
CREIGHTON COMMUNITY HIGH SCH (2, 3)  
CROSS COUNTY HIGH SCHOOL (2, 4)  
DAVID CITY SECONDARY SCHOOL (6, 14)  
EAST BUTLER HIGH SCHOOL (2, 3)  
ELM CREEK HIGH SCHOOL (4, 20)  
EUSTIS-FARNAM HIGH SCHOOL (2, 2)  
FRANKLIN SECONDARY SCHOOL (3, 5)  
FULLERTON HIGH SCHOOL (1, 2)

GIBBON HIGH SCHOOL (9, 30)  
GOTHENBURG SECONDARY SCHOOL (1, 3)  
GRAND ISLAND SENIOR HIGH SCH (139, 216)  
HAMPTON HIGH SCHOOL (1, 1)  
HARVARD HIGH SCHOOL (2, 5)  
HASTINGS SENIOR HIGH SCHOOL (15, 28)  
HOLDREGE HIGH SCHOOL (5, 11)  
HOME SCHOOL (1, 4)  
HOWELLS-DODGE HIGH SCHOOL (1, 1)  
HUMPHREY JR-SR HIGH SCHOOL (1, 4)  
KEARNEY CATHOLIC HIGH SCHOOL (1, 1)  
KEARNEY SR HIGH SCHOOL (16, 19)  
KENESAW SECONDARY SCHOOL (2, 4)  
LAKEVIEW HIGH SCHOOL (10, 24)  
LEIGH HIGH SCHOOL (3, 6)  
LEXINGTON HIGH SCHOOL (134, 298)  
LITCHFIELD HIGH SCHOOL (2, 3)  
LOUP CITY HIGH SCHOOL (2, 2)  
MINDEN HIGH SCHOOL (2, 4)  
NORTHWEST HIGH SCHOOL (11, 36)  
ORD JR-SR HIGH SCHOOL (12, 29)  
OVERTON HIGH SCHOOL (6, 10)  
PALMER JUNIOR-SENIOR HIGH (4, 19)  
PLEASANTON HIGH SCHOOL (9, 25)  
RED CLOUD HIGH SCHOOL (9, 26)  
RIVERSIDE HIGH SCHOOL (3, 6)  
SANDY CREEK JR/SR HIGH SCHOOL (3, 6)  
SCOTUS CENTRAL CATHOLIC (5, 15)  
S-E-M JR/SR HIGH SCHOOL (8, 25)  
SHELBY-RISING CITY HIGH SCHOOL (5, 14)

**CENTRAL COMMUNITY COLLEGE (cont)**

SHELTON HIGH SCHOOL (4, 5)  
SOUTHERN VALLEY JR/SR HIGH (7, 9)  
ST EDWARD HIGH SCHOOL (2, 3)  
ST PAUL HIGH SCHOOL (4, 19)  
SUTTON SECONDARY SCHOOL (2, 4)  
TWIN RIVER SR HIGH SCHOOL (11, 16)  
WILCOX-HILDRETH HIGH SCHOOL (2, 3)  
WOOD RIVER RURAL HIGH SCHOOL (6, 9)

**CHADRON STATE COLLEGE (4)**

CHADRON SENIOR HIGH SCHOOL (14, 29)  
CRAWFORD HIGH SCHOOL (1, 1)  
GORDON-RUSHVILLE HIGH SCHOOL (5, 8)  
SCOTTSBLUFF SENIOR HIGH SCHOOL (24, 26)

**CONCORDIA UNIVERSITY (4)**

CENTENNIAL JR-SR HIGH SCHOOL (2, 2)  
HOME SCHOOL (3, 3)  
PARKVIEW CHRISTIAN SECONDARY (1, 1)  
SEWARD HIGH SCHOOL (6, 16)

**DOANE UNIVERSITY (7)**

ALMA HIGH SCHOOL (6, 6)  
CEDAR BLUFFS HIGH SCHOOL (4, 4)  
FILLMORE CENTRAL HIGH SCHOOL (1, 1)  
MERIDIAN HIGH SCHOOL (1, 1)  
NORRIS HIGH SCHOOL (1, 1)  
SIDNEY HIGH SCHOOL (1, 1)  
WAHOO HIGH SCHOOL (8, 8)

**LITTLE PRIEST TRIBAL COLLEGE (2)**

BANCROFT-ROSALIE JR/SR HIGH SCHOOL (6, 6)  
HOMER HIGH SCHOOL (4, 6)

**MIDLAND UNIVERSITY (3)**

OMAHA BRYAN HIGH SCHOOL (40, 59)  
OMAHA BURKE HIGH SCHOOL (17, 23)  
OMAHA SOUTH MAGNET HIGH SCHOOL (54, 93)

**MID-PLAINS COMMUNITY COLLEGE (23)**

ANSELMO-MERNA HIGH SCHOOL (1, 3)  
ANSLEY HIGH SCHOOL (1, 1)  
BROKEN BOW HIGH SCHOOL (7, 22)  
CALLAWAY HIGH SCHOOL (5, 9)  
CHASE COUNTY HIGH SCHOOL (1, 1)  
CODY-KILGORE HIGH SCHOOL (2, 5)  
DUNDY CO STRATTON HIGH SCHOOL (3, 15)  
HAYES CENTER SECONDARY SCHOOL (3, 11)  
MAXWELL HIGH SCHOOL (6, 16)  
MAYWOOD HIGH SCHOOL (3, 9)  
MC COOK SENIOR HIGH SCHOOL (1, 1)  
MULLEN HIGH SCHOOL (5, 8)  
NORTH PLATTE HIGH SCHOOL (19, 69)  
OGALLALA HIGH SCHOOL (3, 12)  
PAXTON HIGH SCHOOL (4, 15)  
PERKINS COUNTY HIGH SCHOOL (9, 25)  
SANDHILLS HIGH SCHOOL (1, 1)  
SIDNEY HIGH SCHOOL (1, 1)  
SOUTHWEST JR/SR HIGH SCHOOL (2, 5)  
ST PATRICK'S JR-SR HIGH SCHOOL (1, 1)  
SUTHERLAND HIGH SCHOOL (6, 20)  
THEDFORD HIGH SCHOOL (9, 20)  
VALENTINE HIGH SCHOOL (2, 5)

**NEBRASKA COLLEGE OF TECHNICAL AGRICULTURE (1)**

S-E-M JR/SR HIGH SCHOOL (1, 1)

**NEBRASKA INDIAN COMMUNITY COLLEGE (1)**

BANCROFT-ROSALIE JR/SR HIGH SCHOOL (19, 61)



**NEBRASKA WESLEYAN UNIVERSITY (45)**

ALMA HIGH SCHOOL (5, 8)  
BISHOP NEUMANN HIGH SCHOOL (1, 1)  
BLAIR HIGH SCHOOL (1, 2)  
BRIDGEPORT HIGH SCHOOL (7, 7)  
CENTRAL VALLEY HIGH SCHOOL (9, 18)  
COLUMBUS HIGH SCHOOL (11, 11)  
CONESTOGA JR/SR HIGH SCHOOL (1, 1)  
DUNDY CO STRATTON HIGH SCHOOL (1, 3)  
ELKHORN NORTH HIGH SCHOOL (3, 6)  
ELKHORN SOUTH HIGH SCHOOL (2, 5)  
FILLMORE CENTRAL HIGH SCHOOL (1, 1)  
FRANKLIN SECONDARY SCHOOL (12, 21)  
GUARDIAN ANGELS CENTRAL CATHOLIC HS (2, 5)  
HAMPTON HIGH SCHOOL (1, 1)  
HASTINGS SENIOR HIGH SCHOOL (7, 15)  
HAY SPRINGS HIGH SCHOOL (3, 3)  
LAKEVIEW HIGH SCHOOL (3, 3)  
LINCOLN EAST HIGH SCHOOL (26, 54)  
LINCOLN HIGH SCHOOL (69, 132)  
LINCOLN NORTH STAR HIGH SCHOOL (97, 173)  
LINCOLN NORTHEAST HIGH SCHOOL (10, 17)  
LINCOLN NORTHWEST HIGH SCHOOL (13, 14)  
LINCOLN SOUTHEAST HIGH SCHOOL (16, 24)  
LINCOLN SOUTHWEST HIGH SCHOOL (2, 2)  
LINCOLN STANDING BEAR HIGH SCHOOL (4, 4)  
MARIAN HIGH SCHOOL (8, 15)  
NORRIS HIGH SCHOOL (6, 8)  
NORTHEAST SECONDARY SCHOOL (11, 31)  
PAPILLION-LA VISTA SENIOR HIGH (2, 2)  
PAPILLION-LA VISTA SOUTH H S (1, 1)  
PIUS X HIGH SCHOOL (6, 6)  
PLATTSMOUTH HIGH SCHOOL (10, 10)  
RIVERSIDE HIGH SCHOOL (6, 10)  
S-E-M JR/SR HIGH SCHOOL (4, 4)  
SEWARD HIGH SCHOOL (3, 3)  
SIDNEY HIGH SCHOOL (22, 57)

SIOUX COUNTY HIGH SCHOOL (2, 2)  
SOUTH SIOUX SENIOR HIGH SCHOOL (41, 41)  
SOUTHERN VALLEY JR/SR HIGH (10, 13)  
ST CECILIA HIGH SCHOOL (1, 3)  
STUART HIGH SCHOOL (10, 10)  
WAVERLY HIGH SCHOOL (2, 2)  
WAYNE HIGH SCHOOL (5, 10)  
WEST POINT-BEEMER HIGH SCHOOL (8, 10)  
WESTSIDE HIGH SCHOOL (6, 6)

**PERU STATE COLLEGE (13)**

AURORA HIGH SCHOOL (1, 1)  
BEATRICE HIGH SCHOOL (7, 11)  
CENTENNIAL JR-SR HIGH SCHOOL (1, 1)  
CRETE HIGH SCHOOL (7, 8)  
CROSS COUNTY HIGH SCHOOL (3, 3)  
JOHNSON CO CENTRAL HIGH SCHOOL (1, 1)  
NORTH BEND CENTRAL JR/SR HIGH (4, 14)  
RAVENNA SENIOR HIGH (1, 2)  
RIVERSIDE HIGH SCHOOL (2, 2)  
SCRIBNER-SNYDER SECONDARY SCH (2, 3)  
SOUTHERN HIGH SCHOOL (4, 4)  
TRI COUNTY JR-SR HIGH SCHOOL (10, 18)  
YORK HIGH SCHOOL (13, 13)

**SOUTHEAST COMMUNITY COLLEGE (38)**

ASHLAND-GREENWOOD HIGH SCHOOL (5, 6)  
AUBURN HIGH SCHOOL (1, 1)  
BEATRICE HIGH SCHOOL (7, 9)  
CEDAR BLUFFS HIGH SCHOOL (5, 5)  
CENTRAL VALLEY HIGH SCHOOL (1, 1)  
CRETE HIGH SCHOOL (21, 28)  
DESHLER HIGH SCHOOL (3, 9)  
FALLS CITY SENIOR HIGH (22, 76)  
FREEMAN HIGH SCHOOL (1, 1)  
HOME SCHOOL (1, 5)  
HTRS HIGH SCHOOL (3, 7)

**SOUTHEAST COMMUNITY COLLEGE (cont)**

JOHNSON-BROCK HIGH SCHOOL (1, 3)  
JOHNSON-BROCK SECONDARY (6, 13)  
LINCOLN HIGH SCHOOL (2, 8)  
LINCOLN NORTH STAR HIGH SCHOOL (7, 7)  
LINCOLN NORTHEAST HIGH SCHOOL (2, 2)  
LINCOLN NORTHWEST HIGH SCHOOL (7, 10)  
LINCOLN SOUTHEAST HIGH SCHOOL (1, 2)  
LOUISVILLE HIGH SCHOOL (4, 5)  
LOURDES CENTRAL HIGH SCHOOL (1, 1)  
MALCOLM JR/SR HIGH SCHOOL (1, 2)  
MEAD HIGH SCHOOL (4, 11)  
MERIDIAN HIGH SCHOOL (1, 6)  
MILFORD HIGH SCHOOL (7, 17)  
NORRIS HIGH SCHOOL (5, 17)  
PALMYRA JR-SR HIGH SCHOOL (2, 5)  
PAWNEE CITY SECONDARY SCHOOL (3, 7)  
PIUS X HIGH SCHOOL (1, 1)  
PLATTSMOUTH HIGH SCHOOL (2, 5)  
RAYMOND CENTRAL JR/SR HIGH (4, 12)  
SEWARD HIGH SCHOOL (9, 20)  
SOUTHERN HIGH SCHOOL (3, 8)  
STERLING HIGH SCHOOL (2, 6)  
THAYER CENTRAL HIGH SCHOOL (4, 8)  
TRI COUNTY JR-SR HIGH SCHOOL (1, 1)  
WAHOO HIGH SCHOOL (10, 41)  
WAVERLY HIGH SCHOOL (2, 2)  
YORK HIGH SCHOOL (49, 110)

**ST. GREGORY THE GREAT SEMINARY (1)**

PIUS X HIGH SCHOOL (3, 3)

**UNIVERSITY OF NEBRASKA - LINCOLN (1)**

LINCOLN NORTHWEST HIGH SCHOOL (1, 1)

**UNIVERSITY OF NEBRASKA AT KEARNEY (4)**

CENTRAL CITY HIGH SCHOOL (7, 10)

GIBBON HIGH SCHOOL (1, 2)  
KEARNEY SR HIGH SCHOOL (8, 18)  
LEXINGTON HIGH SCHOOL (50, 50)

**UNIVERSITY OF NEBRASKA AT OMAHA (28)**

BELLEVUE EAST SR HIGH SCHOOL (6, 10)  
BELLEVUE WEST SR HIGH SCHOOL (4, 5)  
BENNINGTON SECONDARY SCHOOL (1, 2)  
CRETE HIGH SCHOOL (4, 4)  
DANIEL J GROSS CATHOLIC HIGH (2, 9)  
ELKHORN NORTH HIGH SCHOOL (2, 3)  
ELKHORN SOUTH HIGH SCHOOL (2, 3)  
GRETNA HIGH SCHOOL (1, 1)  
HOME SCHOOL (1, 3)  
MARIAN HIGH SCHOOL (3, 5)  
MERCY HIGH SCHOOL (2, 2)  
MILLARD NORTH HIGH SCHOOL (7, 14)  
MILLARD SOUTH HIGH SCHOOL (5, 8)  
MILLARD WEST HIGH SCHOOL (5, 12)  
OMAHA BRYAN HIGH SCHOOL (110, 145)  
OMAHA BUENA VISTA HIGH SCHOOL (92, 172)  
OMAHA BURKE HIGH SCHOOL (26, 42)  
OMAHA CENTRAL HIGH SCHOOL (55, 117)  
OMAHA NORTH MAGNET HIGH SCHOOL (37, 75)  
OMAHA NORTHWEST MAGNET HIGH SCHOOL (61, 90)  
OMAHA SOUTH MAGNET HIGH SCHOOL (193, 350)  
OMAHA WESTVIEW HIGH SCHOOL (2, 2)  
PAPILLION-LA VISTA SENIOR HIGH (10, 19)  
PAPILLION-LA VISTA SOUTH H S (5, 9)  
PLATTSMOUTH HIGH SCHOOL (5, 5)  
RALSTON HIGH SCHOOL (11, 19)  
SPRINGFIELD PLATTEVIEW COMMUNITY SCHOOLS (3, 5)  
WESTSIDE HIGH SCHOOL (12, 17)

**WAYNE STATE COLLEGE (30)**

ARCADIA HIGH SCHOOL (1, 1)  
BANCROFT-ROSALIE JR/SR HIGH SCHOOL (8, 11)  
BOONE CENTRAL HIGH SCHOOL (11, 20)  
CENTENNIAL JR-SR HIGH SCHOOL (1, 2)  
COLUMBUS HIGH SCHOOL (2, 3)  
CREIGHTON COMMUNITY HIGH SCH (7, 10)  
ELGIN HIGH SCHOOL (1, 1)  
FULLERTON HIGH SCHOOL (5, 10)  
GRAND ISLAND SENIOR HIGH SCH (243, 383)  
GUARDIAN ANGELS CENTRAL CATHOLIC HS (1, 1)  
HARTINGTON-NEWCASTLE HIGH SCHOOL (2, 2)  
HARVARD HIGH SCHOOL (1, 1)  
HOLDREGE HIGH SCHOOL (4, 5)  
LOGAN VIEW JR/SR HIGH SCHOOL (2, 2)  
NORFOLK CATHOLIC HIGH SCHOOL (2, 2)  
NORFOLK SENIOR HIGH SCHOOL (4, 8)  
NORTHEAST SECONDARY SCHOOL (3, 9)  
OAKLAND-CRAIG SENIOR HIGH (6, 9)  
PIERCE JR/SR HIGH SCHOOL (2, 2)  
PONCA HIGH SCHOOL (6, 8)  
RIVERSIDE HIGH SCHOOL (3, 4)  
SANDY CREEK JR/SR HIGH SCHOOL (1, 2)  
SOUTH SIOUX SENIOR HIGH SCHOOL (73, 89)  
ST EDWARD HIGH SCHOOL (1, 1)  
TWIN RIVER SR HIGH SCHOOL (4, 7)  
WAKEFIELD HIGH SCHOOL (1, 1)  
WAUSA HIGH SCHOOL (1, 1)  
WAYNE HIGH SCHOOL (7, 17)  
WEST POINT-BEEMER HIGH SCHOOL (4, 9)

WILBER-CLATONIA HIGH SCHOOL (1, 2)

**WESTERN NEBRASKA COMMUNITY COLLEGE (12)**

ALLIANCE HIGH SCHOOL (1, 2)  
BAYARD SECONDARY SCHOOL (2, 4)  
BRIDGEPORT HIGH SCHOOL (14, 29)  
CHADRON SENIOR HIGH SCHOOL (2, 2)  
CRAWFORD HIGH SCHOOL (2, 5)  
GARDEN COUNTY HIGH SCHOOL (1, 2)  
GERING HIGH SCHOOL (31, 88)  
GORDON-RUSHVILLE HIGH SCHOOL (2, 3)  
HAY SPRINGS HIGH SCHOOL (4, 5)  
MINATARE HIGH SCHOOL (8, 12)  
MITCHELL SECONDARY SCHOOL (3, 4)  
SCOTTSBLUFF SENIOR HIGH SCHOOL (115, 352)

## Access College Early 2023-24 Courses Taken by Scholarship Recipients

College (number of different subject areas)  
Subject Area (number of scholarships)

### **BRYAN COLLEGE OF HEALTH (5)**

Biomedical Sciences (8)  
Health Professions (5)  
Medical Terminology (9)  
Nursing (4)  
Philosophy (3)

### **CENTRAL COMMUNITY COLLEGE (38)**

Agriculture Sciences (7)  
Adv Mfg Design Tech (13)  
Art (3)  
Auto Body (44)  
Biological Sciences (27)  
Business Admin (20)  
Business Tech (4)  
Chemistry (32)  
Construction Tech (14)  
Criminal Justice (78)  
Drafting & Design Tech (7)  
Early Childhood (2)  
Economics (4)  
Education (1)  
English (215)  
Geography (2)  
History (57)  
Health Occupations (137)  
Humanities (2)  
Human Services (2)  
Electronics (35)  
Information Tech (14)

Media Arts (5)  
Mathematics (169)  
Medical Lab Tech (11)  
Music (51)  
Nutrition (10)  
Physical Education (2)  
Philosophy (2)  
Physics (2)  
Political Science (18)  
Personal Development (1)  
Psychology (63)  
Sociology (38)  
Spanish (2)  
Speech (96)  
Theatre (5)  
Welding Technology (25)

### **CHADRON STATE COLLEGE (7)**

Biology (1)  
Education (6)  
English (1)  
History (14)  
Mathematics (18)  
Marketing/Entrepreneurship (5)  
Psychology (19)

### **CONCORDIA UNIVERSITY (5)**

English (11)  
History (2)  
Mathematics (2)

**CONCORDIA UNIVERSITY (cont)**

Science (1)  
Spanish (6)

**DOANE UNIVERSITY (7)**

Business (1)  
Chemistry (1)  
Public Speaking (8)  
Education (2)  
English (3)  
Psychology (1)  
Spanish (6)

**LITTLE PRIEST TRIBAL COLLEGE (7)**

Agriculture (1)  
Communication (1)  
Computer Information (1)  
Information Tech (1)  
Music (6)  
Sociology (2)

**MIDLAND UNIVERSITY (3)**

Biology (16)  
Chemistry (16)  
History (143)

**MID-PLAINS COMMUNITY COLLEGE (29)**

Accounting (2)  
Agriculture (1)  
Art (2)  
Biology (9)  
Business (22)  
Chemistry (2)  
Criminal Justice (7)  
Computer Science (2)  
Early Childhood (1)  
Education (4)

Emergency Medical Training (2)  
English (71)  
History (22)  
Humanities (1)  
Information Tech (2)  
Mathematics (38)  
Music (4)  
Nursing Assistant (11)  
Business Office Tech (5)  
Physical Education (1)  
Philosophy (4)  
Physics (2)  
Political Science (3)  
Psychology (22)  
Sociology (10)  
Spanish (7)  
Speech (16)  
Theatre (1)  
Welding Technology (1)

**NEBRASKA COLLEGE OF TECHNICAL AGRICULTURE (1)**

Agribusiness Mngt Systems (1)

**NEBRASKA INDIAN COMMUNITY COLLEGE (13)**

Biology (4)  
Business (11)  
Economics (3)  
Education (1)  
English (14)  
Geography (5)  
History (6)  
Health (1)  
Information Tech (1)  
Native American Studies (1)  
Political Science (10)

**NEBRASKA INDIAN COMMUNITY COLLEGE (cont)**

Psychology (1)  
Speech (3)

**NEBRASKA WESLEYAN UNIVERSITY (18)**

Accounting (4)  
Business Admin (38)  
Chemistry (34)  
Communication Studies (11)  
Economics (25)  
English (288)  
Geography (12)  
History (165)  
Mathematics (80)  
French (7)  
German (1)  
Spanish (20)  
Philosophy (1)  
Physics (3)  
Political Science (32)  
Psychology (21)  
Religion (4)  
Sociology (3)

**PERU STATE COLLEGE (6)**

Biology (1)  
English (39)  
Mathematics (19)  
Psychology (4)  
Speech (16)  
Statistics (2)

**SOUTHEAST COMMUNITY COLLEGE (36)**

Academic Foundations (1)  
Agriculture (9)  
Automotive Tech (4)  
Bioscience (6)

Business (22)  
Chemistry (4)  
Communication Studies (19)  
Criminal Justice (14)  
Design & Drafting Tech (1)  
Early Childhood (3)  
Economics (9)  
Education (3)  
Emergency Medical Services (1)  
Energy Generation Operations (1)  
English (81)  
Culinary & Hospitality (9)  
Geo Information Systems Tech (3)  
GIS Technician (3)  
History (37)  
Health (31)  
Human Services (1)  
Humanities (2)  
Computer Information Tech (11)  
Precision Machining Tech (4)  
Mathematics (89)  
Medical Assisting (10)  
Music (8)  
Office Professional (1)  
Political Science (5)  
Psychology (47)  
Religious Studies (3)  
Sign Language (2)  
Sociology (3)  
Speech (16)  
Theatre (1)  
Welding Technology (17)

**ST. GREGORY THE GREAT SEMINARY (1)**

Humanities (3)

**UNIVERSITY OF NEBRASKA - LINCOLN (1)**

Child, Youth & Family Studies (1)

**UNIVERSITY OF NEBRASKA AT KEARNEY (7)**

Biology (2)  
Chemistry (4)  
English (8)  
History (11)  
Mathematics (1)  
Spanish (50)  
Teacher Education (4)

**UNIVERSITY OF NEBRASKA AT OMAHA (27)**

Art (6)  
Aviation (5)  
Biology (84)  
Biomechanics (23)  
Information Science & Tech (31)  
Communication Studies (7)  
Criminal Justice (2)  
Computer Science (29)  
Cyber Security (2)  
English (156)  
French (5)  
Geography (122)  
Health & Kinesiology (37)  
History (112)  
Kinesiology (1)  
Mathematics (47)  
Marketing (6)  
Music (1)  
Natural Sciences (1)  
Public Health & Behavior (48)  
Physics (33)  
Political Science (180)  
Psychology (38)  
Sociology (18)

Spanish (129)  
Teacher Education (16)  
Writer's Workshop (2)

**WAYNE STATE COLLEGE (20)**

Art (1)  
Biology/Life Sciences (18)  
Business (10)  
Computer Information Systems (11)  
Communication Arts (72)  
Computer Science (3)  
Earth Science (17)  
Education (51)  
English (91)  
History (44)  
Health Science (5)  
Health Science (5)  
Mathematics (98)  
Music (4)  
Physical Education (5)  
Physics (9)  
Political Science (42)  
Psychology (12)  
Sociology (8)  
Spanish (122)

**WESTERN NEBRASKA COMMUNITY COLLEGE (31)**

Accounting (5)  
Art (2)  
Collision Repair Tech (28)  
Automotive Tech (36)  
Biological Sciences (35)  
Business Admin (7)  
Chemistry (7)  
Criminal Justice (15)  
Early Childhood (4)  
Economics (7)

**WESTERN NEBRASKA COMMUNITY COLLEGE (cont)**

Education (1)  
Emergency Medical Services (2)  
English (83)  
Engineering (9)  
History (34)  
Health Occupations (72)  
Humanities (1)  
Human Services (8)  
Information Tech (27)  
Nursing (1)  
Mathematics (32)

Medical Lab Tech (3)  
Music (1)  
Physics (2)  
Political Science (1)  
Personal Development (5)  
Psychology (11)  
Spanish (30)  
Speech (2)  
Theatre (2)  
Welding Technology (35)