



NEBRASKA'S
COORDINATING COMMISSION
FOR POSTSECONDARY EDUCATION

ACCESS COLLEGE EARLY SCHOLARSHIP 2017-18 YEAR-END REPORT

Statutory Authority Neb. Rev. Stat. § 85-2106

Approved by Commission January 24, 2019

COMMISSIONERS

W. Scott Wilson, Chair
Plattsmouth, Member-at-Large

Dr. Deborah A. Frison, Vice-Chair
Omaha, District 2

Colleen Adam
Hastings, District 5

Gwenn Aspen
Omaha, Member-at-Large

Dr. John Bernthal
Lincoln, District 1

Dr. Ronald Hunter
Hay Springs, District 6

Mary Lauritzen
West Point, Member-at-Large

Dwayne Probyn
Papillion, District 4

Dr. Paul Von Behren
Ames, District 3

STAFF

Dr. Michael Baumgartner
Executive Director

Miste Adamson
Administrative Assistant

Dr. Kathleen Fimple
Academic Programs Officer

Jill Heese
Research Coordinator

Kadi Lukesh
*Bookkeeper, Budget Coordinator,
& Office Manager*

J. Ritchie Morrow
Financial Aid Officer

Helen Pope
Executive Assistant

Gary Timm
Chief Finance & Administrative Officer

Joe Velasquez
Database Manager

Mike Wemhoff
Facilities Officer

Coordinating Commission for Postsecondary Education
140 N. 8th Street, P.O. Box 95005, Lincoln, NE 68509-5005
Phone: (402) 471-2847

The Commission's reports are available online at ccpe.nebraska.gov/reports

Access College Early (ACE) Scholarship Program

Authorized by the Nebraska Legislature in 2007, the Access College Early (ACE) Scholarship Program pays tuition and mandatory fees for qualified, low-income high school students to enroll in college courses from Nebraska colleges or universities, either through dual enrollment or early enrollment agreements with these institutions. High school students may apply for funding under this program by completing the ACE Student Application, which is reviewed by the Coordinating Commission for award consideration.

To qualify for the scholarship, the student or student's family must be approved to participate in one of the federal need-based government programs listed below, have experienced an extreme hardship that affects family income, or be participating in a designated Career Education program as established by the Nebraska Department of Education.

- Free or Reduced Price Lunch Program
- Supplemental Security Income
- Temporary Assistance to Needy Families (TANF)
- Supplemental Nutrition Assistance Program (SNAP)
- Special Supplemental Assistance Program (WIC)

The objective of the ACE program is to encourage well-prepared high school students from low-income families to enroll in college courses. High school students who are awarded an ACE scholarship to complete college courses while in high school can decrease their time to graduation and consequently the cost of a degree. However, students must pay to take advantage of these college course opportunities to receive college credit that can jumpstart their college careers. For students who are economically disadvantaged, the financial constraints are great.

Research shows that high school students who take college courses while in high school remain in school and graduate at higher rates, enroll in college at increased rates, and return for their college sophomore years at higher rates. In Nebraska, public high school ACE recipients are 32 percentage points more likely to go on to college than other public high school students from low-income families.

As can be seen from the charts starting on page 7, public high school students who are ACE scholarship recipients continue on to college at a much greater rate than public high school students from low-income families that do not receive ACE scholarships. In fact, public high school ACE scholarship recipients continue on to college at a slightly higher rate than public high school students from non-low-income families.

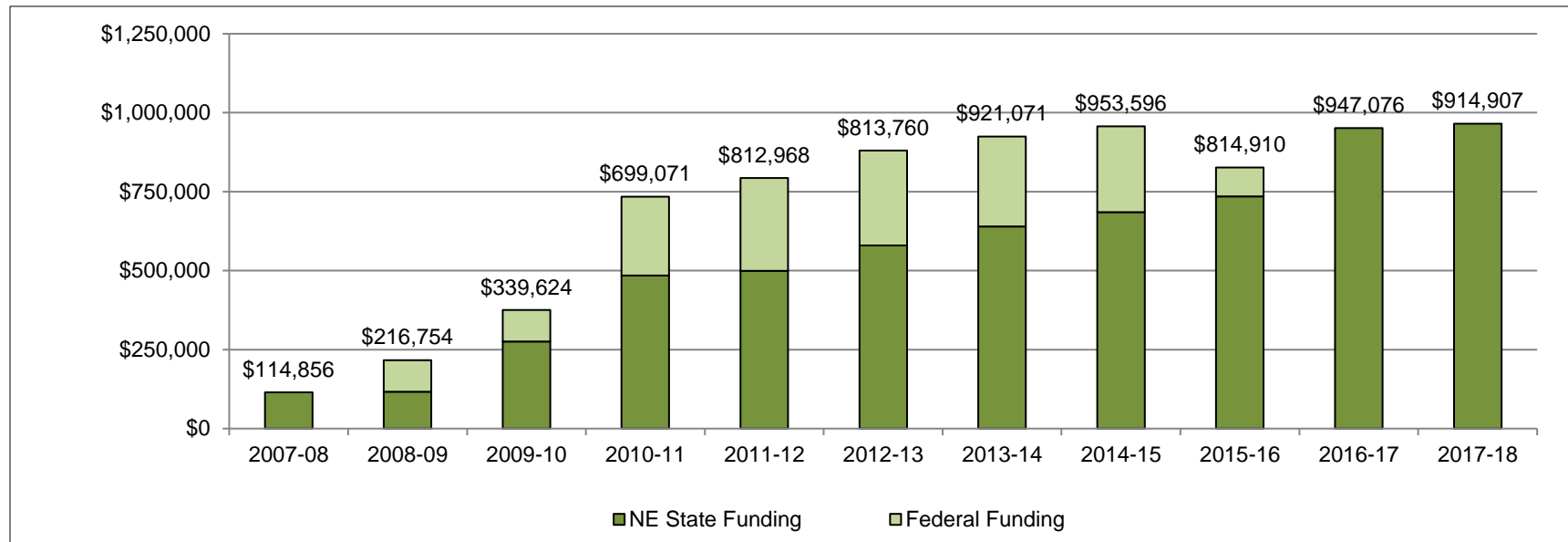
Distribution of the 2017-18 Access College Early Scholarship

The Access College Early (ACE) Scholarship pays the tuition and mandatory fees of eligible Nebraska high school students taking dual-enrollment and early-admit college courses at participating Nebraska colleges and universities. For 2017-18 the ACE Scholarship program was funded with \$965,300 General funds appropriated by the Legislature.

Nebraska colleges and universities enrolled 2,456 low-income, Nebraska high school students from 224 high schools who received 3,723 ACE Scholarships in 2017-18. The total amount awarded was \$914,907.10¹, with the average award per scholarship equaling \$245.75.

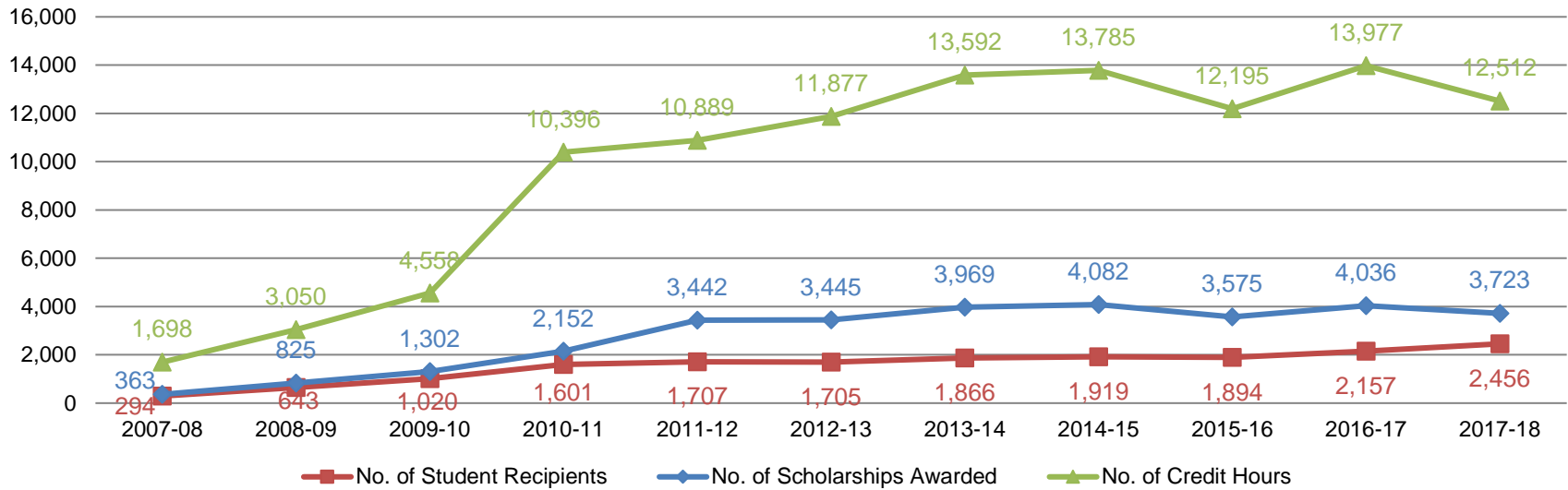
The ACE Scholarship allowed these high school students from low-income families to enroll in 12,512 credit hours of college course work. Seventy four percent of the grades received by these students were a B or better. (See page 10)

Total ACE Scholarship Amount Awarded

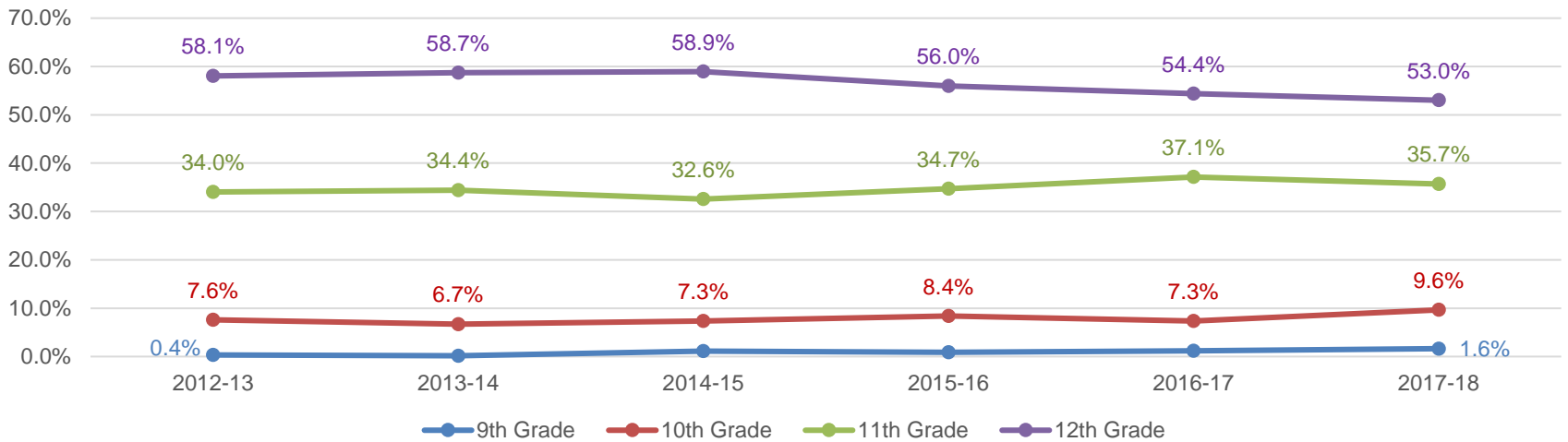


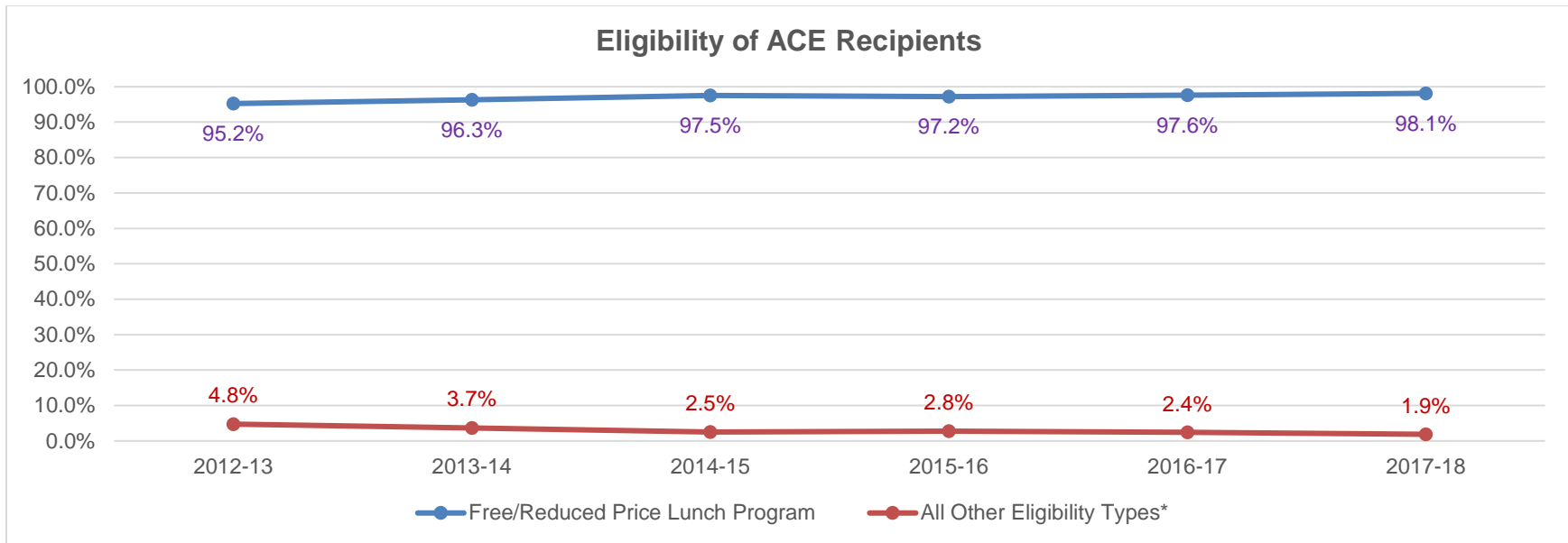
¹ The number of scholarships awarded to a student is limited each year based on available funding and an estimated number of students who will be applying. For 2017-18 students were limited to two scholarships for the year. Since all students who applied and met the eligibility requirements were awarded up to the maximum not all funds appropriated were awarded. The balanced carried over and will be awarded in the 2018-19 year.

ACE Scholarship Recipients, Scholarships Awarded, and Credit Hours Taken

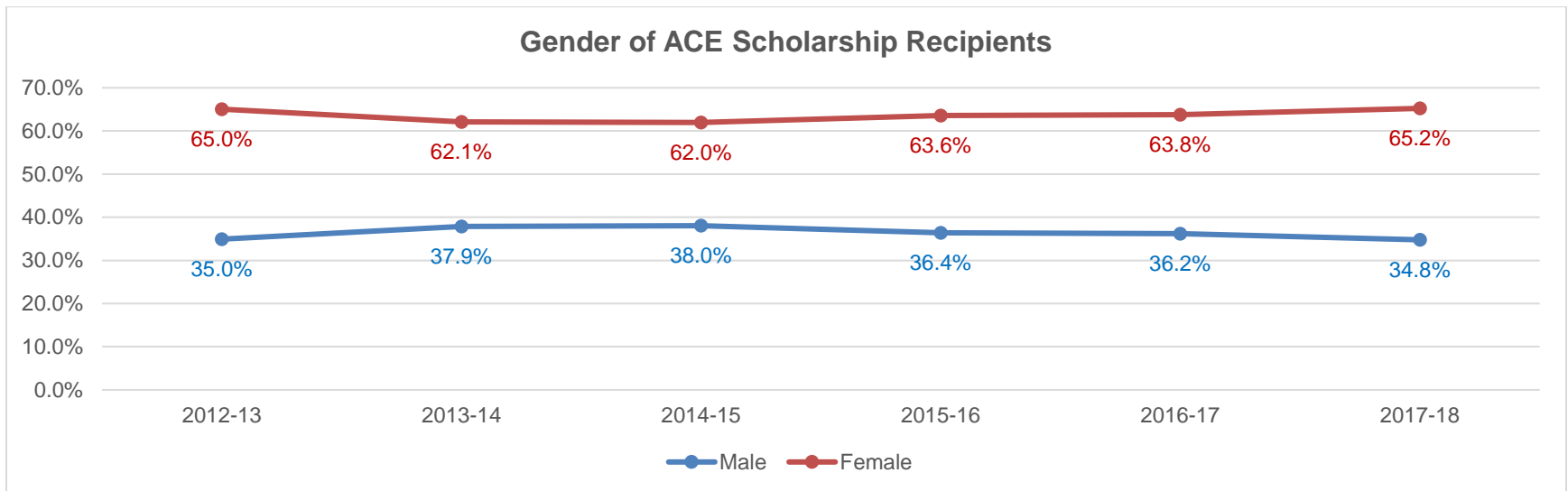


High School Grade Level of ACE Scholarship Recipients

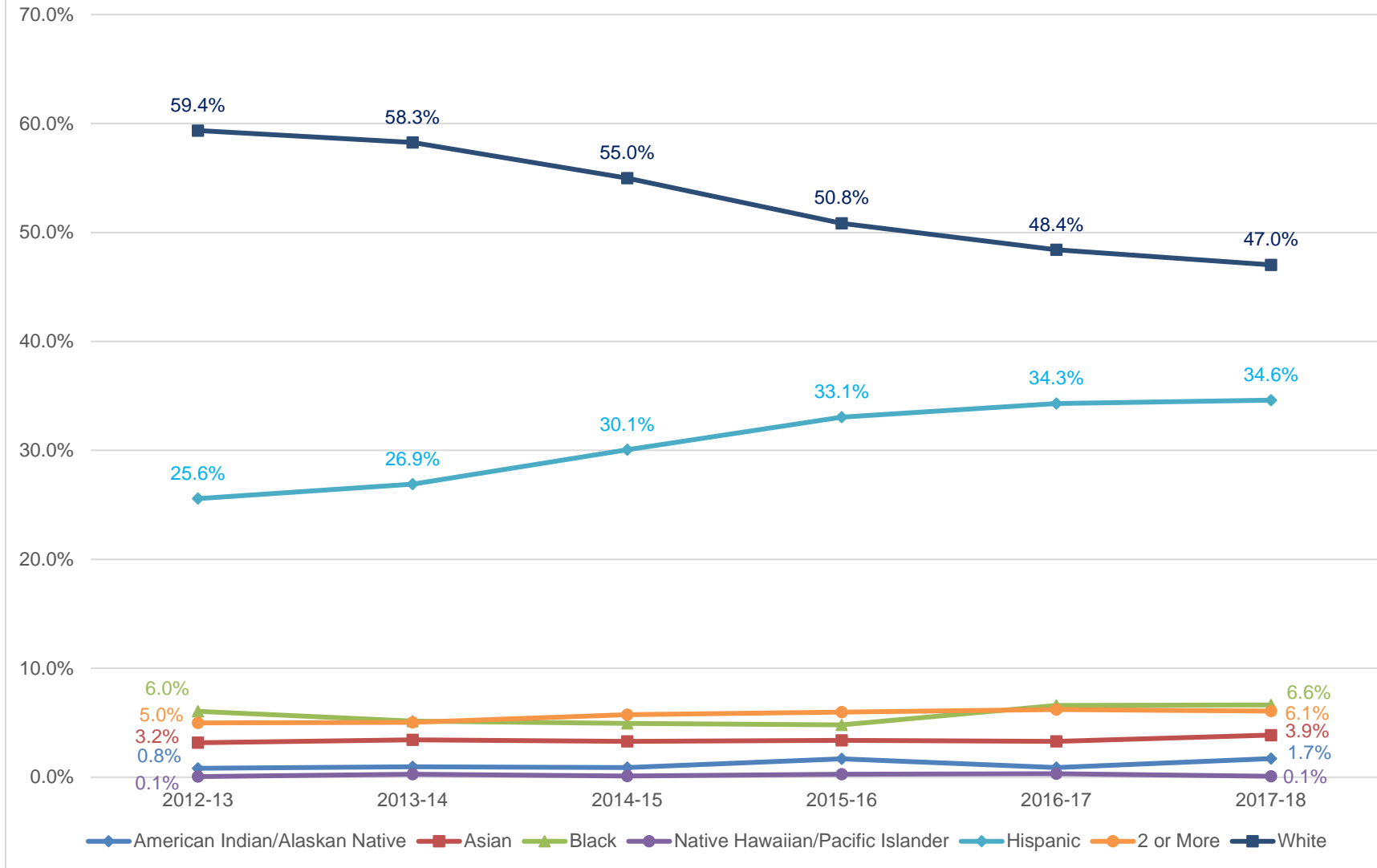




*All Other Eligibility Types Include: CPSE – Career Program of Study; SNAP – Supplemental Nutrition Assistance Program; SSI – Supplemental Security Income; TANF – Temporary Assistance for Needy Families; WIC – Special Supplemental Nutrition Program; Other Hardship



Race of ACE Scholarship Recipients



College Continuation Rates of ACE Scholarship Recipients

Since 2009, the Coordinating Commission has conducted research to determine how many of the high school seniors who receive ACE scholarships continue on to college compared to other low-income and non-low-income graduates of Nebraska's public high schools.

For this research, a college continuation rate is defined as the percentage of public high school graduates who were enrolled in college within one year of their high school graduation. For example, for the public high school seniors who received ACE scholarships during 2015–16, the college continuation rate is the percentage of these students who were enrolled in college any time between June 1, 2016, and May 31, 2017.

Using student records and summary reports from the Nebraska Department of Education (NDE) and enrollment records from the National Student Clearinghouse (NSC), the Commission calculates the college continuation rates by gender for the public high school seniors who were ACE scholarship recipients.

The Commission then compares the college continuation rates for the seniors who received ACE scholarships while attending public high schools to the college continuation rates for other low-income and non-low-income graduates of Nebraska's public high schools.

Low-income students are defined as students who are approved to receive free or reduced-price school lunches.

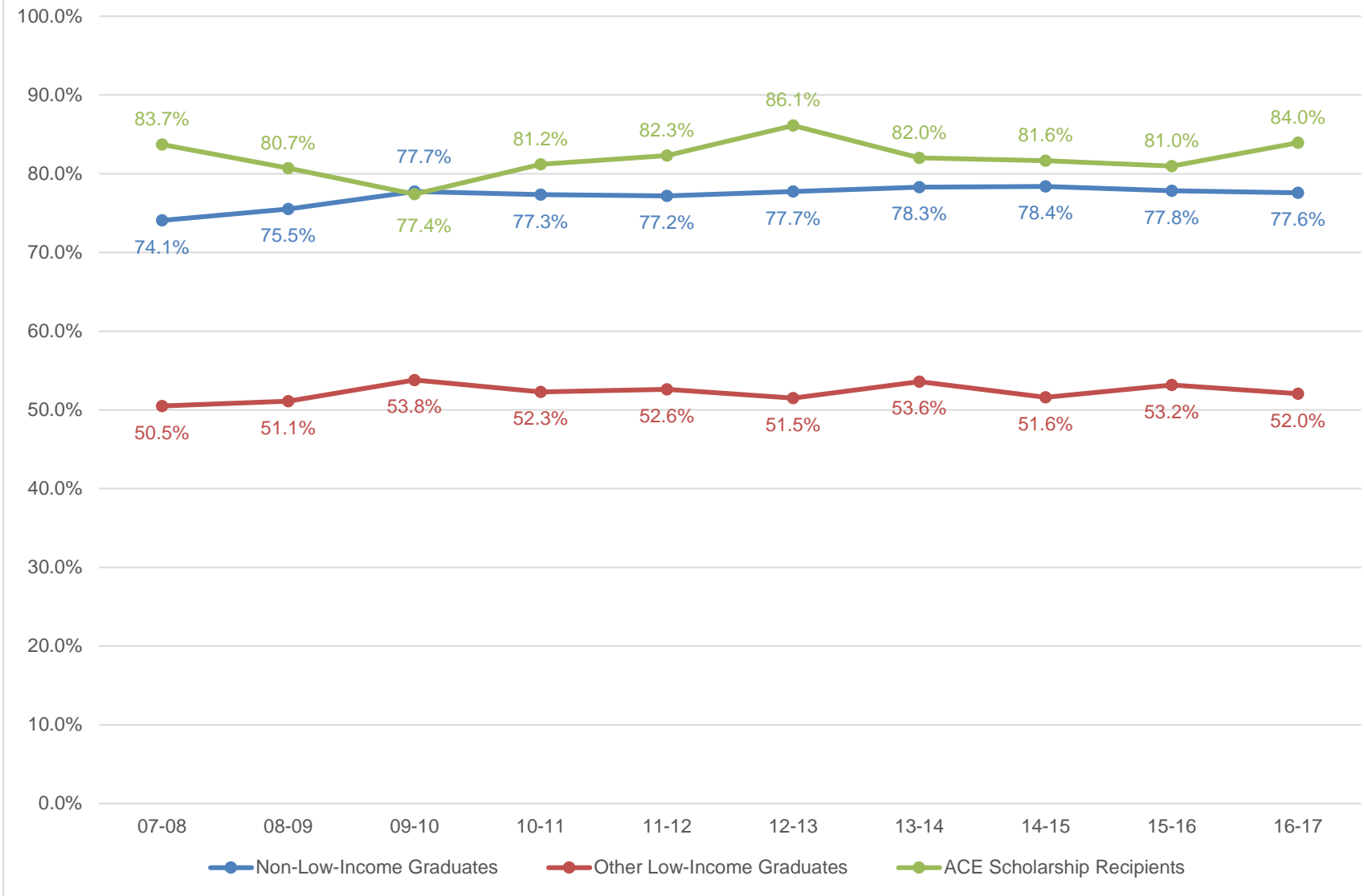
Non-low-income students are students who are not approved for free or reduced-price school lunches.¹

Since the Commission relies on college enrollment records from the NSC, students who continue on to college at non-NSC-reporting institutions are classified as not continuing on to college. As a result, college continuation rates reported here are underreported to some degree.

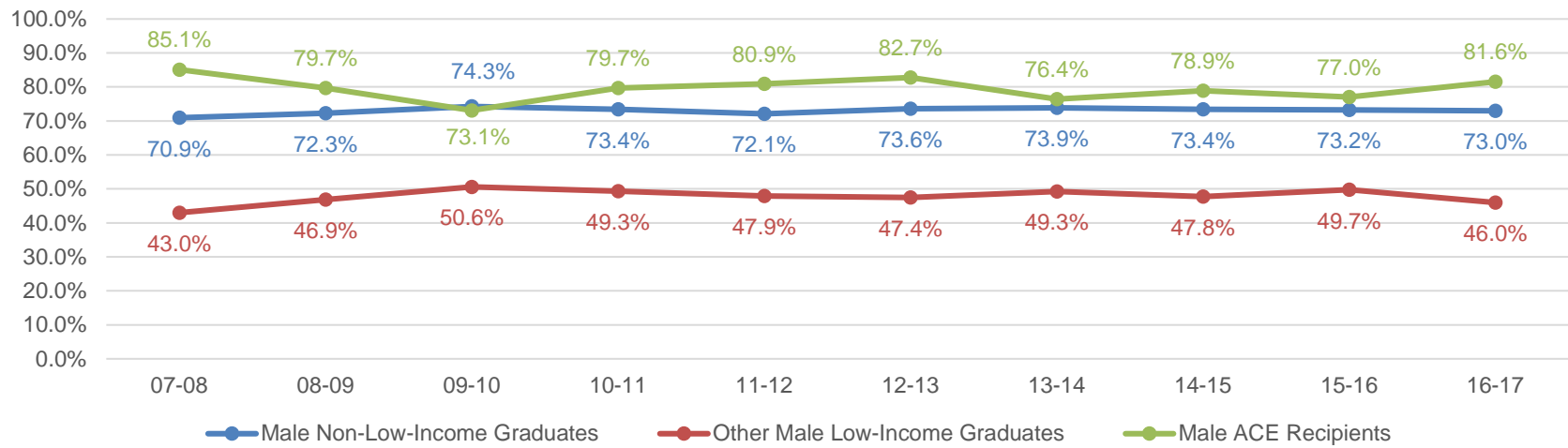
Students who were homeschooled or attended nonpublic (private) high schools are not included in this phase of the research because the NDE does not have sufficient records for the Commission to compute college continuation rates for nonpublic high school students.

¹ Non-low-income students for this study include at least some students who live in low-income households but who did not apply for free or reduced-price school lunches. Since participation in the free or reduced-price school lunch program is the only indicant of household income in the student records maintained by the Nebraska Department of Education, low-income students in the non-low-income category cannot be identified and excluded for the purposes of analysis.

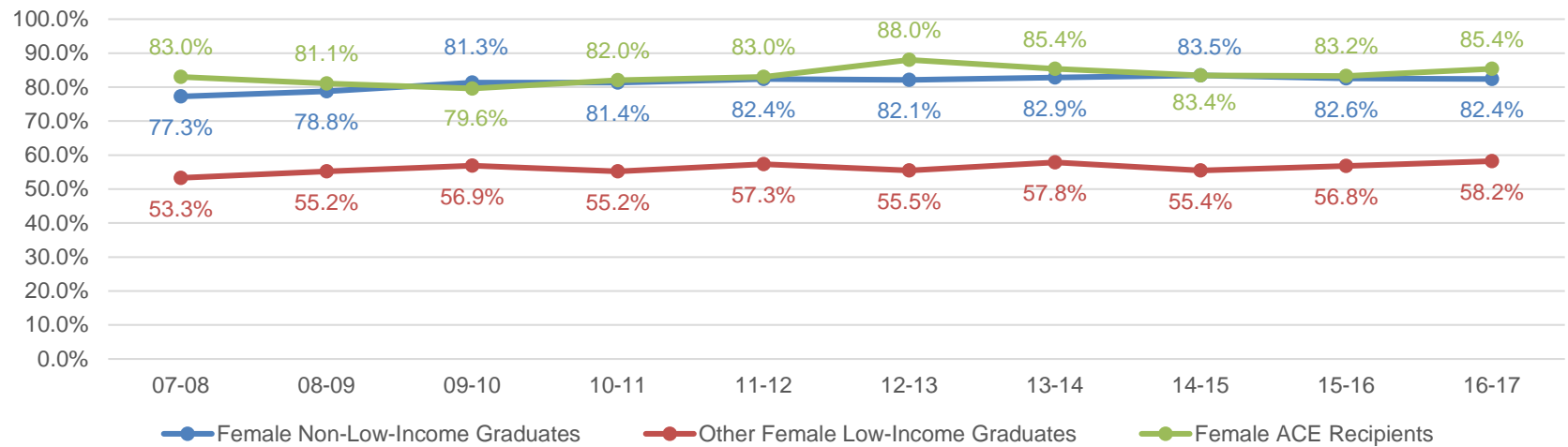
Public High School College Continuation Rate



Male Public High School College Continuation Rate



Female Public High School College Continuation Rate



2017-18 Access College Early Scholarship				
College	Amount Awarded	Number of Students	Number of Scholarships	Average per Scholarship
Central Community College (CCC)	\$205,200.00	462	697	\$294.40
Chadron State College (CSC)	\$5167.08	11	15	\$344.47
College of St Mary (CSM)	\$99.00	1	1	\$99.00
Concordia University (CU)	\$540.00	2	2	\$270.00
Little Priest Tribal College (LPTC)	\$15,888.00	12	24	\$662.00
Metropolitan Community College (MCC)	\$28,369.00	273	366	\$77.51
Midland University (MU)	\$56,750.00	160	227	\$250.00
Mid-Plains Community College (MPCC)	\$48,048.00	93	144	\$333.67
NE College of Technical Agriculture (NCTA)	\$318.75	3	3	\$106.25
Northeast Community College (NECC)	\$97,157.50	305	442	\$219.81
Nebraska Wesleyan University (NWU)	\$115,510.00	245	345	\$334.81
Peru State College (PSC)	\$29,400.00	106	148	\$198.65
Southeast Community College (SCC)	\$25,884.93	127	175	\$147.91
University of Nebraska at Kearney (UNK)	\$5,325.00	21	22	\$242.05
University of Nebraska-Lincoln (UNL)	\$1,500.00	6	6	\$250.00
University of Nebraska at Omaha (UNO)	\$220,057.61	582	808	\$272.35
Western Nebraska Community College (WNCC)	\$44,902.23	155	232	\$193.54
Wayne State College (WSC)	\$14,160.00	60	64	\$221.25

NOTE: Tuition and fee charges are set by each institution, so Average per Scholarship varies by institution.

NOTE 2: Student numbers on the above and following charts do not total 2,456 due to students taking classes at multiple institutions.

NOTE 3: Data related to colleges where the number of students in the above chart equaled five or less were masked in the Grades Earned per Course chart, the Gender Race/Ethnicity chart, and the Grade & Eligibility chart on the following pages.

**2017-18 Access College Early Scholarship
Grades Earned per Course**

College	A+	A	A-	B+	B	B-	C+	C	C-	D+	D	D-	F	W	IP**	Hours^
CCC	37	298		73	136		30	67		7	19		15	15		2,052
CSC		3			7			2					2	1		55
CSM@																
CU@																
LPTC		11			8			5								72
MCC		122			97			85			30		19	12	1	1,620
MU		67			77			58			23		2			684
MPCC	8	70		12	26		6	10		2	2		4	4		462
NCTA@																
NECC	66	148		57	71		11	33		9	11		18	17	1	1,367.5
NWU	29	145	30	36	52	10	10	17	4	3	3		3	3		1,214
PSC		80		18	30		6	10		1	1		2			490
SCC	14	51		31	25		16	10		3	6		6	12	1	761.5
UNK	1	4	6		7	1	1	2								71
UNL	1		1		1		1	1					1			20
UNO	30	270	46	53	210	27	23	96	7	6	26	6	5	3		2,603
WNCC	12	35	32	19	35	16	9	18	10	2	6	7	20	11		781
WSC		21	6	11	11	6	3	3	3							236

** Course work in progress

^ Total number of credit hours paid for by the scholarship

@ Data masked due to low numbers

**2017-18 Access College Early Scholarship
Gender & Race**

College	Female	Male	American Indian/Alaskan Native	Asian	Black	Native Hawaiian/Pacific Islander	Hispanic	2 or More	White
CCC	283	179	4	8	11		186	15	238
CSC	5	6	1				1		9
CSM@									
CU@									
LPTC	6	6	10					1	1
MCC	171	102	2	6	40		108	17	100
MU	114	46		10	14		98	8	30
MPCC	61	32		1	3		7	6	76
NCTA@									
NECC	214	91	10		4	1	74	12	204
NWU	164	81	3	15	14		66	13	134
PSC	65	41	2	3	3		10	5	83
SCC	77	50		6	2		7	9	103
UNK	15	6					12	2	7
UNL	4	2						1	5
UNO	399	183	5	50	75	1	265	52	134
WNCC	97	58	6		3		46	11	89
WSC	42	18		1	4		28	3	24

@ Data masked due to low numbers

2017-18 Access College Early Scholarship Grade & Eligibility* Criteria											
College	9 th	10 th	11 th	12 th	CPSE	F/R	Other Hardship	SNAP	SSI	TANF	WIC
CCC		11	157	294		453	2	4	3		
CSC			4	7		11					
CSM@											
CU@											
LPTC			9	3		12					
MCC	36	45	84	108		264	3	4	2		
MU		9	145	6		160					
MPCC		5	33	55		92					1
NCTA@											
NECC	2	8	103	192		302	2			1	
NWU		1	92	152		237	3	3	2		
PSC		1	37	68		104	1	1			
SCC		1	48	78		125	1		1		
UNK			15	6		21					
UNL			2	4		5		1			
UNO	2	155	143	282		573	3	3	2		1
WNCC		3	58	94		155					
WSC		5	29	26		60					

*CPSE – Career Program of Study; F/R – Free or Reduced Price Lunch Program; SNAP – Supplemental Nutrition Assistance Program; SSI – Supplemental Security Income; TANF – Temporary Assistance for Needy Families; WIC – Special Supplemental Nutrition Program

@ Data masked due to low numbers

Access College Early 2017-18 Number of Scholarships Awarded by High School

College (number of high schools)

High School (number of students, number of scholarships)

Central Community College (51):

Adams Central (Hastings) (6, 8)

Arapahoe (1, 2)

Arcadia (3, 5)

Aurora (8, 8)

Blue Hill (3, 3)

Boone Central (Albion) (6, 7)

Burwell (2, 2)

Cambridge (2, 3)

Central Catholic (Grand Island) (1, 1)

Central City (10, 15)

Central Valley (Greeley) (2, 3)

Columbus (24, 34)

Cozad (4, 6)

David City (4, 4)

Elba (1, 1)

Elm Creek (4, 8)

Elwood (5, 8)

Fullerton (7, 11)

Gibbon (4, 7)

Giltner (2, 3)

Grand Island (190, 312)

Hampton (3, 4)

Hastings, (20, 21)

Holdrege (2, 2)

Howells-Dodge (1, 2)

Humphrey (2, 4)

Lakeview (Columbus) (7, 10)

Leigh (1, 2)

Lexington (34, 40)

Loomis (5, 9)

Madison (7, 9)

Northwest (Grand Island) (13, 21)

Orchard (1, 1)

Ord (4, 6)

Osceola (3, 4)

Palmer (3, 4)

Pleasanton (2, 4)

Pope John XXIII (Elgin) (2, 3)

Ravenna (4, 6)

Sandy Creek (Fairfield) (26, 46)

S-E-M (Sumner) (2, 4)

Shelby-Rising City (4, 7)

Shelton (5, 9)

Silver Lake (Roseland) (4, 6)

Southern Valley (Oxford) (6, 6)

Spalding Academy (1, 2)

St Cecilia (Hastings) (1, 1)

St Paul (2, 3)

Twin River (Genoa) (2, 2)

West Holt (1, 1)

Wood River (5, 7)

Chadron State College (2):

Chadron (8, 12)
Sidney (3, 3)

College of St Mary (1)

Omaha Northwest (1, 1)

Concordia (1):

Home School (2, 2)

Little Priest Tribal College (1)

Winnebago (12, 24)

Metropolitan Comm College (22):

Bellevue East (2, 2)
DC West (Valley) (6, 7)
Fort Calhoun (6, 11)
Fremont (24, 37)
Gretna (9, 17)
Home School (8, 15)
Logan View (Hooper) (1, 1)
Millard North (Omaha) (1, 2)
Millard South (Omaha) (5, 10)
Millard West (Omaha) (2, 4)
Omaha Benson (6, 7)
Omaha Bryan (66, 88)
Omaha Burke (20, 21)
Omaha Central (19, 19)
Omaha North (17, 24)
Omaha Northwest (5, 6)
Omaha South (57, 63)
Papillion-LaVista (8, 14)
Papillion-LaVista South (6, 11)

Platteview (2, 3)

Ralston (2, 3)

Scribner-Snyder (1, 1)

Midland University (8):

Archbishop Bergan (Fremont) (1, 1)
Fremont (1, 1)
Omaha Benson (5, 5)
Omaha Bryan (50, 65)
Omaha Burke (22, 30)
Omaha Central (10, 11)
Omaha North (10, 11)
Omaha South (61, 103)

Mid-Plains Community College (24):

Arcadia (1, 1)
Brady (2, 3)
Broken Bow (4, 8)
Burwell (1, 1)
Callaway (2, 2)
Chase Co (Imperial) (1, 2)
Cody-Kilgore (1, 1)
Dundy Co (Benkelman) (5, 6)
Hershey (2, 2)
Hitchcock Co (Trenton) (1, 2)
Litchfield (1, 1)
Loup Co (Taylor) (1, 1)
Maxwell (1, 1)
McCook (1, 1)
Medicine Valley (Curtis) (2, 2)
Mullen (2, 3)
North Platte (46, 75)
Paxton (6, 10)

Mid-Plains Community College (cont)

Perkins Co (Grant) (3, 5)
Sandhills (Dunning) (2, 4)
Sargent (2, 2)
Southwest (Bartley) (1, 2)
Valentine (1, 2)
Wauneta-Palisade (4, 7)

NCTA (3):

Arnold (1, 1)
North Platte (1, 1)
Wauneta-Palisade (1, 1)

Nebraska Wesleyan (46):

Adams Central (6, 9)
Alma (4, 7)
Aurora (5, 5)
Bancroft-Rosalie (1, 2)
Bishop Neumann (Wahoo) (2, 2)
Blue Hill (3, 4)
Boone Central (Albion) (3, 3)
Bridgeport (4, 4)
Central Valley (Greeley) (1, 2)
Columbus (5, 6)
Conestoga (Murray) (1, 2)
Elkhorn (Omaha) (2, 4)
Elkhorn South (Omaha) (1, 1)
Franklin (7, 14)
Gordon-Rushville (9, 9)
Guardian Angels (West Point) (1, 2)
Hampton (1, 1)
Hastings (12, 19)
Lexington (27, 39)

Lincoln East (1, 2)
Lincoln High (3, 3)
Lincoln North Star (43, 69)
Lincoln Northeast (4, 5)
Lincoln Southeast (4, 4)
Lincoln Southwest (1, 2)
Marian (Omaha) (1, 1)
Mercy (Omaha) (1, 2)
Norfolk (8, 9)
Norris (4, 5)
Northeast (Lyons) (3, 5)
Oakland-Craig (4, 5)
Ord (2, 4)
Papillion-LaVista South (2, 2)
Red Cloud (1, 1)
Riverside (Cedar Rapids) (2, 4)
Roncalli (Omaha) (2, 4)
Seward (4, 5)
Sidney (11, 18)
Sioux Co (Harrison) (3, 4)
South Sioux (20, 20)
St Cecilia (Hastings) (2, 2)
Stuart (9, 13)
Sutton (1, 1)
Waverly (2, 3)
Wayne (4, 7)
West Point-Beemer (7, 9)
Westside (Omaha) (1, 1)

Northeast Community College (48):

Ainsworth (3, 4)
Bancroft-Rosalie (10, 15)
Battle Creek (2, 2)

Northeast Community College (cont):

Bloomfield (1, 2)
Boyd Co (Spencer) (15, 22)
Burwell (15, 18)
Cedar Cath (Hartington) (3, 6)
Chadron (1, 1)
Chambers (2, 4)
Clearwater-Orchard (3, 5)
Creighton (16, 26)
Elgin (4, 7)
Elkhorn Valley (Tilden) (6, 8)
Ewing (4, 7)
Guardian Angels (West Pt.) (1, 2)
Hartington-Newcastle (1, 1)
Homer (1, 1)
Madison (3, 5)
Neligh-Oakdale (4, 5)
Newman Grove (9, 13)
Niobrara (6, 6)
Norfolk (43, 57)
Norfolk Catholic (1, 1)
Northeast (Lyons) (1, 1)
Oakland-Craig (1, 1)
O'Neill (11, 16)
Osmond (3, 3)
Palmyra (1, 2)
Pender (3, 5)
Pierce (8, 11)
Plainview (8, 12)
Pope John XXIII (Elgin) (1, 1)
Randolph (1, 2)
Rock Co (Bassett) (4, 9)
South Sioux (26, 30)

Stanton (5, 8)
Stuart (5, 5)
Tekamah-Herman (3, 5)
Wakefield (13, 23)
Wausa (4, 5)
Wayne (3, 4)
West Boyd (5, 8)
West Holt (6, 10)
West Point-Beemer (20, 30)
Wheeler Central (Bartlett) (1, 2)
Winside (1, 1)
Wisner-Pilger (7, 12)
Wynot (10, 18)

Peru State College (26):

Alma (1, 1)
Arcadia (1, 2)
Beatrice (11, 17)
Centennial (Utica) (1, 1)
Crete (4, 7)
Cross Co (Stromsburg) (4, 7)
Deshler (2, 3)
Elkhorn South (Omaha) (1, 1)
Fairbury (1, 1)
Falls City (5, 6)
Homer (1, 2)
HTRS (Humboldt) (8, 12)
Johnson Co (Tecumseh) (2, 3)
Kenesaw (2, 2)
Lourdes Central (NE City) (2, 2)
McCool Junction (1, 1)
Nebraska City (5, 5)
Norris (Firth) (1, 1)

Peru State College (cont)

North Bend (10, 17)
Pawnee City (4, 4)
Riverside (Cedar Rapids) (1, 1)
Scribner-Snyder (3, 4)
Southern (Wymore) (2, 3)
Syracuse-Dunbar-Avoca (1, 2)
Tri County (Dewitt) (8, 10)
York (24, 33)

Southeast Community College (33):

Arapahoe (1, 1)
Ashland-Greenwood (2, 3)
Beatrice (10, 13)
Crete (5, 5)
Deshler (3, 4)
Fairbury (1, 2)
Falls City (4, 7)
Friend (1, 1)
Heartland (Henderson) (1, 2)
High Plains (Polk) (1, 1)
Home School (1, 1)
Johnson-Brock (1, 1)
Lewiston (3, 6)
Lincoln East (3, 4)
Lincoln High (1, 2)
Lincoln North Star (8, 9)
Lincoln Northeast (6, 8)
Lincoln Southeast (4, 8)
Lincoln Southwest (3, 4)
Mead (2, 3)
Milford (2, 3)
Norris (Firth) (5, 5)

Pawnee City (8, 10)
Pius X (Lincoln) (2, 4)
Plattsmouth (4, 6)
Raymond Central (1, 1)
Seward (6, 6)
Southern (Wymore) (4, 6)
Sterling (1, 1)
Wahoo (3, 5)
Waverly (1, 1)
York (25, 35)
Yutan (4, 8)

Univ. of Nebraska at Kearney (7):

Central City (1, 1)
Gering (1, 1)
Grand Island (2, 2)
Kearney (4, 5)
Lexington (11, 11)
Omaha Northwest (1, 1)
Shelton (1, 1)

Univ. of Nebraska – Lincoln (6):

Bancroft-Rosalie (1, 1)
Freeman (1, 1)
Gordon-Rushville (1, 1)
Homer (1, 1)
Raymond Central (1, 1)
Lincoln Southwest (1, 1)

Univ. of Nebraska at Omaha (30):

Bellevue East (11, 20)
Bellevue West (14, 20)
Bennington (1, 1)

Univ. of Nebraska at Omaha (cont)

Blair (1, 1)
Brownell Talbot (Omaha) (1, 2)
Creighton Prep (Omaha) (3, 4)
Crete (3, 3)
Elkhorn (Omaha) (4, 4)
Elkhorn South (Omaha) (1, 1)
Lincoln East (2, 2)
McCook (1, 1)
Mercy (Omaha) (4, 4)
Millard North (Omaha) (1, 2)
Millard South (Omaha) (5, 9)
Millard West (Omaha) (2, 3)
Mt Michael (Omaha) (1, 1)
Oakland-Craig (1, 1)
Omaha Benson (48, 56)
Omaha Bryan (85, 102)
Omaha Burke (85, 123)
Omaha Central (60, 81)
Omaha North (19, 31)
Omaha Northwest (19, 25)
Omaha South (153, 226)
Papillion-La Vista (11, 16)
Papillion-La Vista South (7, 10)
Plattsmouth (2, 2)
Ralston (22, 38)
Raymond Central (1, 1)
Westside (Omaha) (14, 19)

Wayne State College (12):

Aurora (5, 5)

Fullerton (4, 5)
Oakland-Craig (2, 2)
Osmond (3, 3)
Pierce (1, 1)
Riverside (Cedar Rapids) (2, 2)
South Sioux (34, 36)
Twin River (Genoa) (3, 4)
Wausa (1, 1)
Wayne (2, 2)
West Point-Beemer (2, 2)
Wisner-Pilger (1, 1)

Western NE Community College (15):

Alliance (5, 8)
Banner County (Harrisburg) (1, 2)
Bayard (6, 8)
Bridgeport (6, 9)
Chadron (9, 12)
Crawford (3, 5)
Elba (1, 2)
Garden County (Oshkosh) (1, 1)
Gering (1, 1)
Gordon-Rushville (12, 16)
Hay Springs (1, 2)
Hyannis (2, 4)
Minatare (10, 12)
Morrill (3, 4)
Scottsbluff (91, 143)
Sidney (2, 2)
Sioux County (Harrison) (1, 1)

Access College Early 2017-18 Courses Taken by Scholarship Recipients

College (number of different subject areas)
Subject Area (number of scholarships)

Central Community College (28):

Agriculture Sciences (5)
Adv Mfg Design Tech (34)
Art (1)
Auto Body (22)
Biological Sciences (13)
Business Admin (5)
Business Tech (6)
Chemistry (4)
Construction Tech (49)
Drafting & Design Tech (19)
Economics (8)
Education (3)
Electronics (4)
English (165)
Entrepreneurship (1)
History (34)
Health Occupations (67)
Information Tech (22)
Mathematics (42)
Music (9)
Nutrition (1)
Physical Education (2)
Physical Science (1)
Political Science (26)
Psychology (25)
Sociology (15)

Speech (106)
Welding Tech (6)

Chadron State College (6):

Communication (1)
English (2)
Finance (1)
Mathematics (9)
Management (1)
Marketing (1)

College of St Mary (1)

Law (1)

Concordia (1)

Spanish (2)

Little Priest Tribal College (7)

Education (3)
English (10)
Math (2)
Political Science (1)
Psychology (2)
Sociology (5)
Speech (1)

Metropolitan Comm College (36):

Accounting (3)
Auto Collision Tech (6)
Auto Technology (3)
Biology (10)
Business Admin (6)
Chemistry (4)
Criminal Justice (7)
Diesel Technology (1)
Design/Media Arts (7)
Early Childhood (65)
Economics (1)
Emergency Medical Services (7)
English (19)
Entrepreneurship (1)
Finance (5)
Fire Science Tech (2)
Geography (6)
Health Info Mngt Systems (12)
History (12)
Horticulture/Land Mngt (44)
Health (12)
Industrial/Commercial Trade (1)
Information Tech (54)
Mathematics (21)
Photography (1)
Physics (4)
Plumbing Technology (1)
Precision Machine Tech (10)
Psychology (4)
Science (1)
Sociology (10)
Spanish (1)

Speech (7)
Video/Audio Communication (7)
Welding (9)
Workplace Skills (2)

Midland University (5):

Chemistry (3)
English (61)
Earth Science (10)
History (150)
Mathematics (3)

Mid-Plains Community College (16):

Accounting (3)
Biology (13)
Chemistry (6)
English (34)
History (30)
Mathematics (25)
Music (5)
Nursing Asst (5)
Office Tech (3)
Physical Education (1)
Philosophy (1)
Political Science (7)
Psychology (1)
Sociology (1)
Spanish (5)
Speech (4)

NCTA (2):

Animal Science (1)
Veterinary Technology (2)

Nebraska Wesleyan (13):

Biology (2)
Chemistry (2)
Communication Studies (16)
Economics (5)
English (187)
French (4)
Geography (1)
History (57)
Mathematics (47)
Physics (7)
Political Science (2)
Psychology (3)
Spanish (13)

Northeast Community College (25):

Accounting (8)
Agriculture (10)
Biology (10)
Business (2)
Drafting (2)
Early Childhood (4)
Economics (8)
Education (3)
English (73)
Engineering (1)
Entrepreneurship (1)
Geography (1)
History (24)
Health Education (27)
Health/Phys Ed/Rec (19)
Information Tech (4)
Library/Information Services (1)

Mathematics (82)
Nurse Aide (48)
Physics (9)
Political Science (5)
Psychology (44)
Sociology (8)
Speech (46)
Welding (2)

Peru State College (12):

Biological Science (10)
Chemistry (1)
Education (1)
English (53)
History (6)
Mathematics (18)
Physics (10)
Political Science (7)
Psychology (19)
Sociology (5)
Speech (17)
Statistics (1)

Southeast Community College (21):

Agriculture (5)
Bioscience (1)
Business Admin (8)
Criminal Justice (3)
Early Childhood Ed (2)
Economics (4)
Education (11)
English (27)
Entrepreneurship (2)

Southeast Community College (cont)

Food Service/Hospitality (6)
Health (10)
Horticulture (5)
Information Tech (7)
Mathematics (31)
Medical Assisting (5)
Nursing Assistant (4)
Political Science (1)
Psychology (8)
Sociology (5)
Speech (11)
Welding (18)

Univ. of Nebraska at Kearney (6):

Chemistry (3)
Comp Sci & Info Tech (2)
German (2)
History (2)
Spanish (12)
Teachers Education (1)

Univ. of Nebraska – Lincoln (4):

Anthropology (2)
Entomology (1)
Mathematics (1)
Psychology (2)

Univ. of Nebraska at Omaha (27):

Art/Art History (10)
Aviation (3)
Biology (33)
Chinese (1)

Computer Sci/IST (34)
Criminal Justice (2)
Emergency Mngt (1)
English (146)
Geography (150)
German (2)
Health Ed (2)
Health/Phys Ed/Rec (1)
History (55)
Mathematics (43)
Marketing (2)
Music (1)
Philosophy (4)
Physical Education (1)
Physics (34)
Political Science (125)
Psychology (41)
Religion (10)
Sociology (8)
Spanish (58)
Special Ed/Comm Disorders (2)
Teacher Ed (39)
Writers Workshop (1)

Wayne State College (10):

Biology (2)
Communication Arts (2)
Education (1)
English (3)
History (2)
Industrial Tech (1)
Mathematics (43)
Psychology (1)
Sociology (7)
Spanish (2)

Western NE Community College (34):

Advanced Mfg Design Tech (5)
Auto Body Tech (5)
Automotive Tech (6)
Biological Sciences (10)
Business Administration (1)
Construction (6)
Criminal Justice (8)
Early Childhood Ed (1)

Education (1)
English (43)
Engineering Tech (3)
History (12)
Health (22)
Human Services (1)
Information tech (1)
Mathematics (29)
Music (1)
Nursing (2)
Nursing Assistant (33)
Personal Development (4)
Philosophy (3)
Physical Education/Coaching (2)
Political Science (1)
Practical Nursing (1)
Psychology (16)
Spanish (3)
Speech (3)
Theatre Arts (1)
Welding (9)