



NEBRASKA'S
COORDINATING COMMISSION
FOR POSTSECONDARY EDUCATION

**ACCESS COLLEGE EARLY SCHOLARSHIP
2015-16 YEAR-END REPORT**

Statutory Authority 85-2106

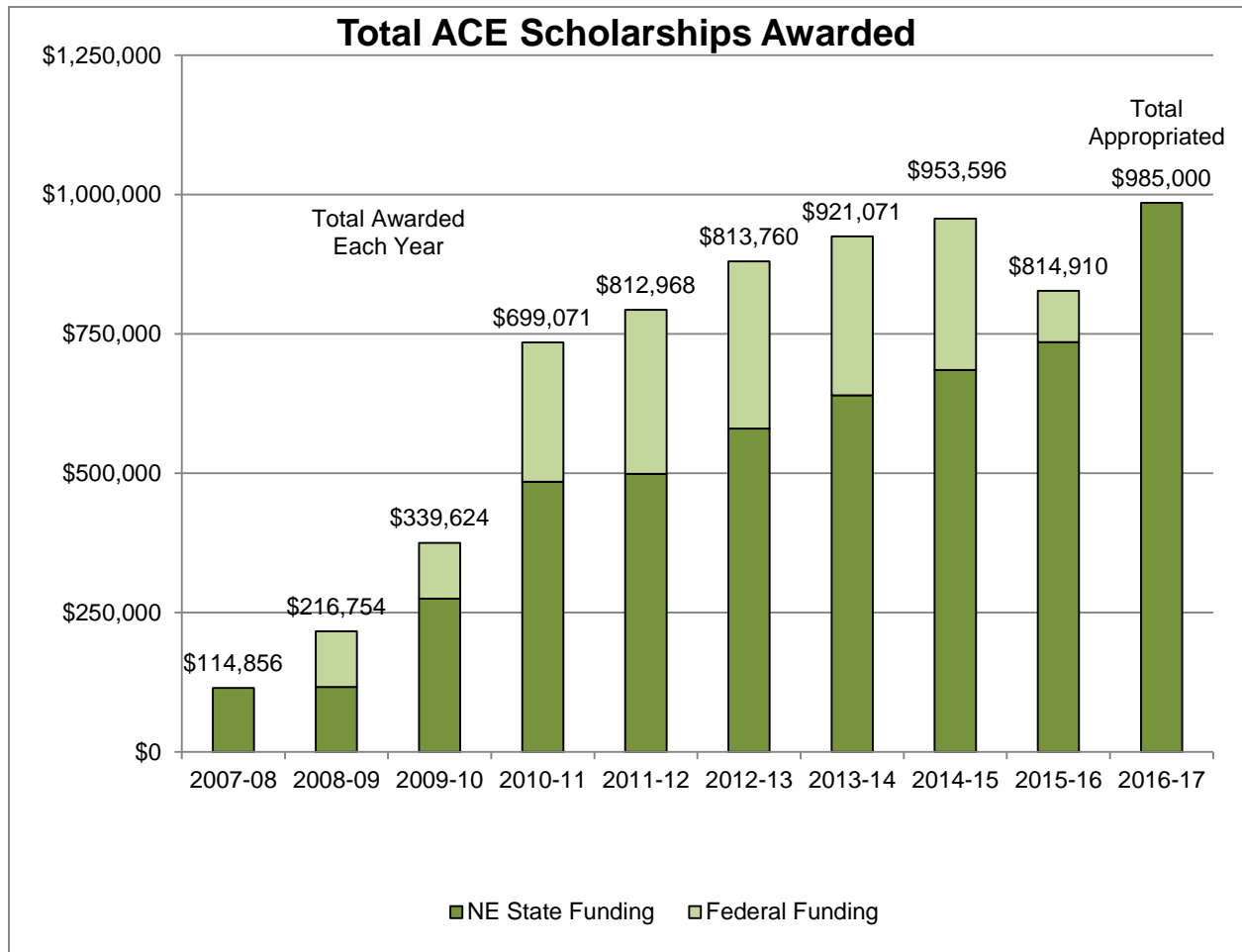
Commission Approval January 26, 2017

Distribution of the 2015-16 Access College Early Scholarship

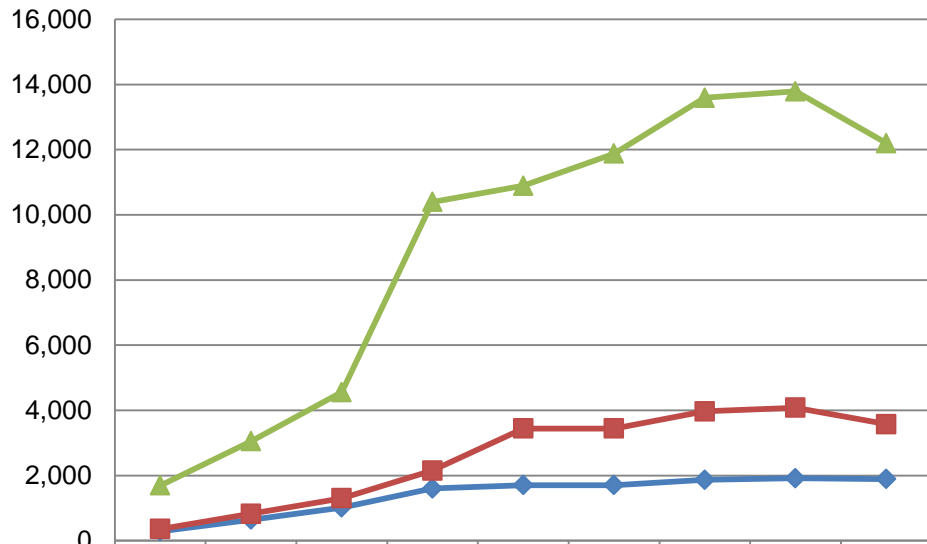
The Access College Early (ACE) Scholarship pays the tuition and mandatory fees of eligible Nebraska high school students taking dual-enrollment and early-admit college courses at participating Nebraska colleges and universities. For 2015-16 the ACE Scholarship program was funded with \$735,000 General funds appropriated by the Legislature and \$92,082 in federal College Access Challenge Grant funds returned by CACG sub-grantees at the conclusion of their projects.

Nebraska colleges and universities enrolled 1,894 low-income, Nebraska high school students from 204 high schools who received 3,575 ACE Scholarships in 2015-16. The total amount awarded was \$814,909.91, with the average award per scholarship equaling \$227.95.

The ACE Scholarship allowed these low-income high school students to enroll in 12,194.5 credit hours of college course work. Seventy-six percent of the grades received by these students were a B or better.

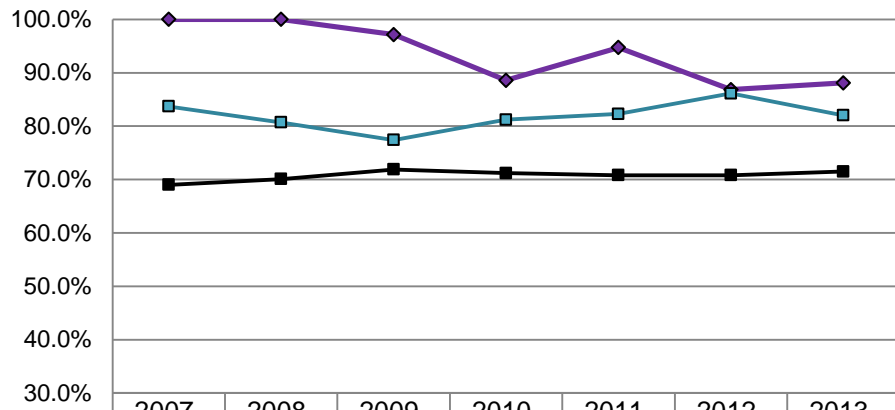


ACE Recipients



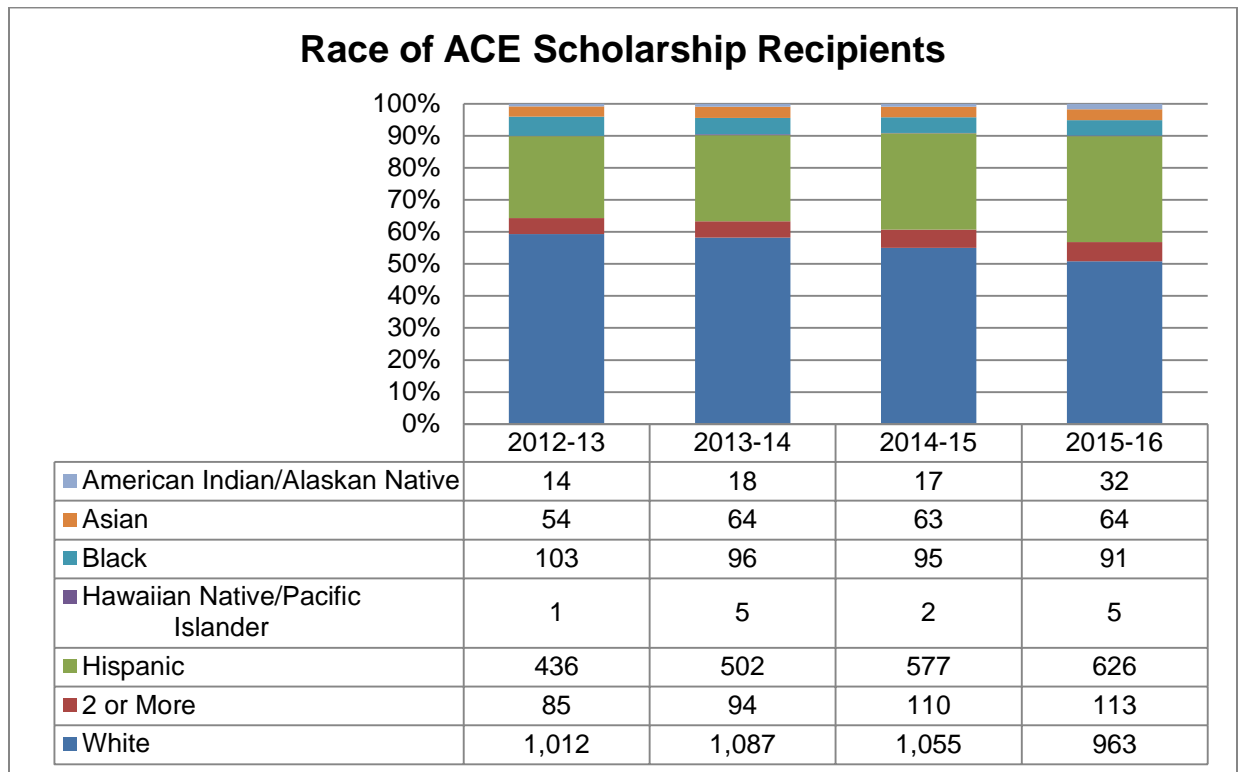
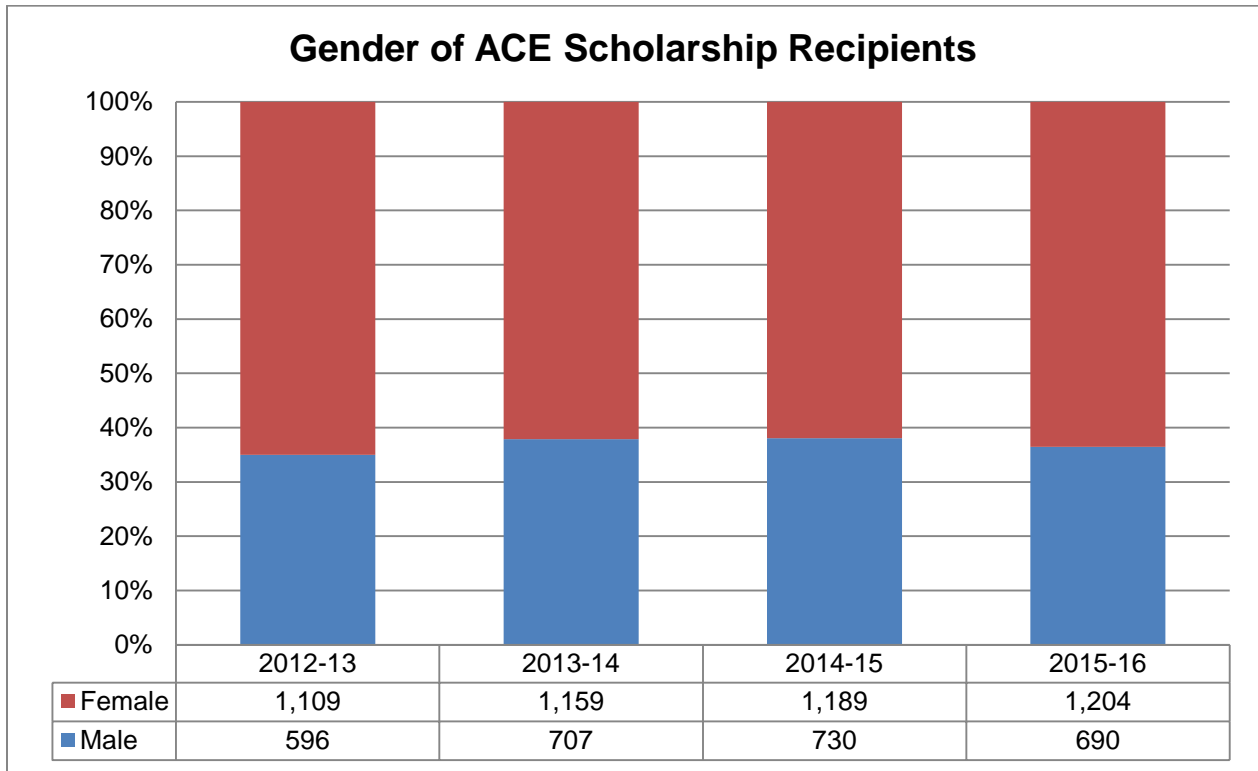
	2007-08	2008-09	2009-10	2010-11	2011-12	2012-13	2013-14	2014-15	2015-16
◆ Number of Recipients	294	643	1,020	1,601	1,707	1,705	1,866	1,919	1,894
■ Number of Scholarships	363	825	1,302	2,152	3,442	3,445	3,969	4,082	3,575
▲ No. of Credit Hours	1,698	3,050	4,558	10,396	10,889	11,877	13,592	13,785	12,195

Percent of Seniors Going on to College

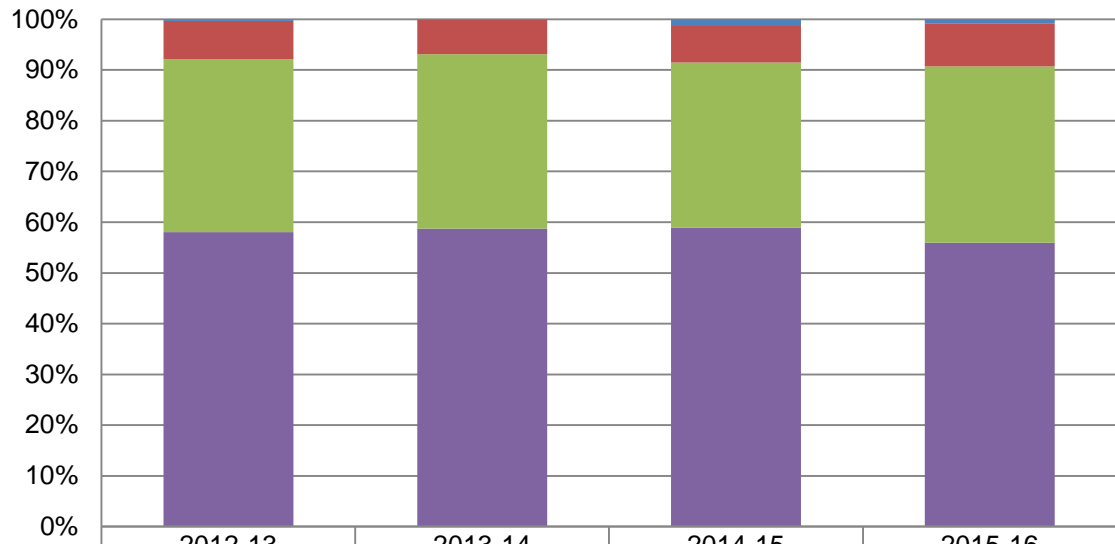


	2007-08	2008-09	2009-10	2010-11	2011-12	2012-13	2013-14
◆ Senior ACE Recipients at Nonpublic High Schools or who were Homeschooled	100.0%	100.0%	97.1%	88.6%	94.7%	86.8%	88.1%
■ Senior ACE Recipients at Public High Schools	83.7%	80.7%	77.4%	81.2%	82.3%	86.1%	82.0%
■ All Public High School Graduates	69.0%	70.1%	71.9%	71.2%	70.8%	70.8%	71.5%

Access College Early Scholarship Demographic Information

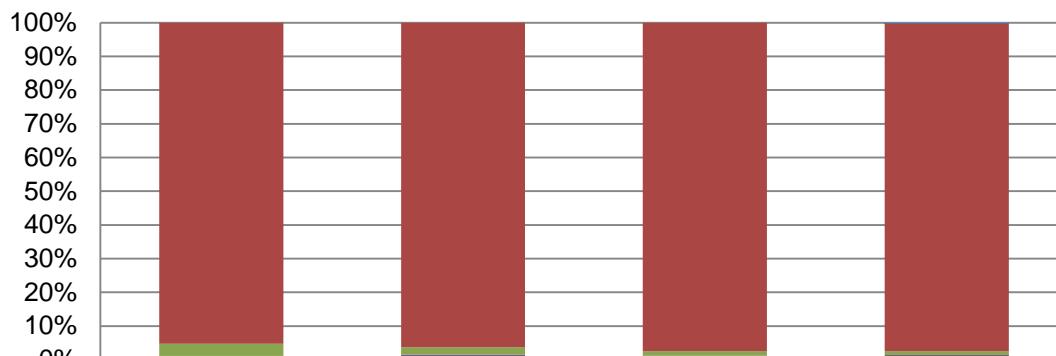


Grade of ACE Scholarship Recipients



	2012-13	2013-14	2014-15	2015-16
9th Grade	6	3	22	17
10th Grade	129	125	141	159
11th Grade	580	642	625	658
12th Grade	990	1,096	1,131	1,060

Eligibility of ACE Recipients*



	2012-13	2013-14	2014-15	2015-16
CPSE				5
F/R Price Lunch	1,624	1,797	1,871	1,841
Other Hardship	62	41	25	21
SNAP	14	12	16	16
SSI	4	6	4	6
TANF	-	-	-	-
WIC	1	10	3	5

* CPSE – Career Program of Study; F/R – Free or Reduced Price Lunch Program; SNAP – Supplemental Nutrition Assistance Program; SSI – Supplemental Security Income; TANF – Temporary Assistance for Needy Families; WIC – Special Supplemental Nutrition Program

2015-16 Access College Early Scholarship

College	Amount Awarded	Number of Students	Number of Scholarships	Average per Scholarship
CCC	\$214,032.00	406	758	\$282.36
CSC	\$4,851.42	15	18	\$269.52
Creighton	\$3,540.00	8	8	\$442.50
Hastings	\$1,000.00	3	10	\$100.00
MCC	\$32,565.25	288	469	\$69.44
Midland	\$30,500.00	82	122	\$250.00
MPCC	\$48,708.00	80	156	\$312.23
NCTA	\$11,092.00	32	62	\$178.90
NECC	\$115,911.75	272	523	\$221.63
NWU	\$119,065.00	250	392	\$303.74
PSC	\$23,700.00	95	154	\$153.90
SCC	\$63,306.46	164	302	\$209.62
UNK	\$6,168.75	24	26	\$237.26
UNL	\$3,311.75	8	8	\$413.97
UNO	\$98,222.59	244	336	\$292.33
WSC	\$8,350.00	43	55	\$151.82
WNCC	\$30,584.95	98	176	\$173.78

NOTE: Student numbers on the above and following charts do not total 1,894 due to students taking classes at multiple institutions.

NOTE 2: Data related to colleges where the number of students in the above chart equaled five or less were masked in the Grades Earned per Course chart, the Gender Race/Ethnicity chart, and the Grade & Eligibility chart on the following pages

**2015-16 Access College Early Scholarship
Grades Earned per Course**

College	A+	A	A-	B+	B	B-	C+	C	C-	D+	D	D-	F	W	IP**	Hours^
CCC	35	331		97	153		22	75		4	13		15	13		2,277
CSC		10			7			1								66
Creighton					3			3					2			32
Hastings [@]																-
MCC		147			159		1	92			31		30	9		2,057
Midland		18	42		25	11	1	11			8		6			365
MPCC	17	57		16	22		14	9		2	5		7	7		504.5
NCTA	2	24	9	8	4	3	1		3	1			3	2	2	188
NECC	93	214		52	72		28	35		4	4		9	12		1,622.5
NWU	28	129	37	48	79	11	11	24	2	5	10	1	4	3		1,354
PSC		72		27	33		6	8		3	1		4			474
SCC	18	69		64	41		36	32		12	4		14	12		1,317
UNK	7	5	1	5	4		1	2						1		80
UNL		1	2		1	1		1	1		1					27
UNO	7	70	83	16	73	32	5	30	4		6		8	2		1,084
WSC		19	13	6	10	4		1	1			1				167
WNCC	13	36	24	15	17	16	5	18	4	3	4	1	15	6		559.5

** Course work in progress

^ Total number of credit hours paid for by the scholarship

@ Data masked due to low numbers

**2015-16 Access College Early Scholarship
Gender & Race**

College	Female	Male	American Indian/Alaskan Native	Asian	Black	Hawaiian Native/Pacific Islander	Hispanic	2 or More	White
CCC	235	171	4	4	5	1	171	25	196
CSC	13	2	-	-	1	-	4	-	10
Creighton	7	1	-	1	2	-	2	-	3
Hastings [@]									
MCC	171	117	4	4	36	-	115	23	106
Midland	55	27	1	4	8	-	50	6	13
MPCC	52	28	2	-	2	-	8	8	60
NCTA	20	12	-	-	-	-	5	2	25
NECC	185	87	9	4	5	-	72	6	176
NWU	153	97	2	25	8	-	59	14	142
PSC	77	18	3	2	-	1	17	4	68
SCC	100	64	4	9	6	-	15	9	121
UNK	16	8	-	-	-	-	10	2	12
UNL	7	1	-	-	-	-	1	-	7
UNO	158	86	2	17	22	1	114	16	72
WSC	31	12	1	-	1	-	3	1	37
WNCC	67	31	3	2	1	2	44	9	37

@ Data masked due to low numbers

**2015-16 Access College Early Scholarship
Grade & Eligibility* Criteria**

College	9th	10th	11th	12th	CPSE	F/R	Other Hardship	SNAP	SSI	TANF	WIC
CCC	-	16	126	264	-	397	2	5	1	-	1
CSC	-	-	1	14	-	15	-	-	-	-	-
Creighton	-	-	-	8	3	5	-	-	-	-	-
Hastings [@]											
MCC	11	77	110	90	1	277	3	6	1	-	-
Midland	-	4	75	3	-	82	-	-	-	-	-
MPCC	-	2	20	58	-	77	1	1	1	-	-
NCTA	3	5	9	15	1	30	1	-	-	-	-
NECC	1	9	78	184	-	267	3	1	-	-	1
NWU	-	1	106	143	-	246	3	1	-	-	1
PSC	-	1	37	57	-	92	2	-	-	-	1
SCC	-	1	58	105	-	159	3	1	1	-	-
UNK	-	-	6	18	-	22	2	-	-	-	-
UNL	-	-	1	7	-	8	-	-	-	-	-
UNO	2	54	59	129	-	239	1	1	1	-	2
WSC	-	-	5	38	-	43	-	-	-	-	-
WNCC	-	-	32	66	-	97	-	-	1	-	-

*CPSE – Career Program of Study; F/R – Free or Reduced Price Lunch Program; SNAP – Supplemental Nutrition Assistance Program; SSI – Supplemental Security Income; TANF – Temporary Assistance for Needy Families; WIC – Special Supplemental Nutrition Program

@ Data masked due to low numbers

Access College Early 2015-16 Number of Scholarships Awarded by High School

College (number of high schools)

High School (number of students, number of scholarships)

Central Community College (45):

Adams Central (Hastings) (4, 7)
Alma (3, 4)
Arcadia (4, 7)
Aurora (5, 6)
Blue Hill (2, 2)
Boone Central (Albion) (4, 5)
Burwell (1, 1)
Cedar Catholic (Hartington) (1, 1)
Central City (7, 12)
Central Valley (Greeley) (4, 7)
Clarkson (1, 3)
Columbus (22, 37)
Cozad (9, 17)
Cross Co (Stromsburg) (3, 3)
David City (3, 3)
Doniphan-Trumbull (1, 3)
Elba (2, 3)
Fullerton (11, 27)
Gibbon (3, 3)
Giltner (1, 2)
Grand Island (189, 406)
Hampton (3, 6)
Hastings, (27, 30)
High Plains (Polk) (1, 1)
Humphrey (4, 9)
Lakeview (Columbus) (1, 1)
Leigh (1, 2)
Lexington (21, 32)
Northwest (Grand Island) (11, 18)
Palmer (3, 8)
Pope John XXIII (Elgin) (1, 1)
Ravenna (4, 12)
Sandy Creek (Fairfield) (11, 16)
Schuyler Central (1, 1)
Scotus Central (Columbus) (3, 3)
S-E-M (3, 5)
Shelby-Rising City (3, 3)
Silver Lake (Roseland) (2, 2)
Southern Valley (Oxford) (5, 7)

Spalding Academy (2, 3)
St Edward (3, 6)
St Paul (4, 10)
Twin River (Genoa) (1, 1)
Wood River (10, 22)
York (1, 1)

Chadron State College (5):

Arcadia (2, 2)
Chadron (4, 6)
Gordon-Rushville (4, 4)
Scottsbluff (1, 1)
Sidney (4, 5)

Creighton (5):

Omaha Bryan (1, 1)
Omaha Burke (2, 2)
Omaha North (1, 1)
Omaha Northwest (1, 1)
Omaha South (3, 3)

Hastings College (2)

Hastings (2, 6)
St Cecilia (Hastings) (1, 4)

Metropolitan Comm College (22):

Arlington (5, 13)
DC West (Valley) (10, 17)
Fort Calhoun (3, 5)
Fremont (30, 63)
Gretna (8, 13)
Home School (3, 11)
Logan View (Hooper) (2, 2)
Millard South (Omaha) (13, 27)
Millard West (Omaha) (3, 6)
Omaha Benson (3, 4)
Omaha Bryan (132, 182)
Omaha Burke (11, 13)
Omaha Central (33, 51)

Metro Comm College (cont)

Omaha North (6, 7)
 Omaha Northwest (5, 5)
 Omaha South (7, 11)
 Papillion-LaVista (2, 4)
 Papillion-LaVista South (4, 11)
 Platteview (1, 1)
 Ralston (6, 20)
 Westside (Omaha) (1, 3)

Gordon-Rushville (1, 3)
 Hampton (1, 2)
 Ord (1, 1)
 Pender (1, 1)
 Riverside (Cedar Rapids) (2, 5)
 Wheeler Central (Bartlett) (1, 2)
 Wilcox-Hildreth (1, 1)
 York (2, 4)

Midland University (6):

Fremont (4, 4)
 Omaha Benson (1, 1)
 Omaha Bryan (31, 49)
 Omaha Central (4, 4)
 Omaha North (7, 7)
 Omaha South (35, 57)

Nebraska Wesleyan (41):

Alma (4, 8)
 Aurora (2, 3)
 Bancroft-Rosalie (5, 5)
 Boone Central (Albion) (6, 12)
 Central Valley (Greeley) (5, 7)
 Columbus (5, 5)
 Cozad (1, 1)
 Duchesne (Omaha) (1, 2)
 Elkhorn (2, 3)
 Elwood (1, 2)
 Franklin (1, 1)
 Gordon-Rushville (6, 6)
 Guardian Angels (West Pt) (1, 1)
 Hampton (2, 2)
 Hastings (36, 76)
 Hay Springs (1, 1)
 Lexington (28, 51)
 Lincoln Christian (1, 1)
 Lincoln East (1, 1)
 Lincoln High (5, 5)
 Lincoln North Star (38, 54)
 Lincoln Northeast (10, 12)
 Lincoln Southeast (1, 3)
 Lincoln Southwest (2, 2)
 Malcolm (1, 1)
 Mercy (Omaha) (3, 4)
 Norfolk (8, 9)
 Norris (1, 1)
 Oakland-Craig (6, 8)
 Omaha Burke (8, 15)
 Papillion-LaVista (2, 3)
 Papillion-LaVista South (2, 2)
 Roncalli Catholic (Omaha) (1, 2)
 Seward (2, 2)
 Sidney (12, 24)

Mid-Plains Community College (20):

Arcadia (4, 4)
 Brady (4, 8)
 Broken Bow (6, 7)
 Callaway (1, 2)
 Chase Co (Imperial) (3, 5)
 Cody-Kilgore (4, 9)
 Dundy Co (Benkelman) (5, 5)
 Hershey (7, 12)
 Home School (1, 2)
 Hyannis (2, 7)
 Medicine Valley (Curtis) (3, 6)
 Mullen (1, 1)
 North Platte (28, 63)
 Ogallala (2, 4)
 Paxton (3, 7)
 Sandhills (Dunning) (1, 2)
 Sargent (2, 3)
 St Patrick's (North Platte) (1, 2)
 Sutherland (1, 4)
 Wallace (1, 3)

NCTA (13):

Burwell (1, 1)
 Cambridge (11, 29)
 Cozad (7, 9)
 Elm Creek (2, 3)
 Elwood (1, 1)

Nebraska Wesleyan (cont):

South Sioux (14, 14)
Southern Valley (Oxford) (2, 2)
St Cecilia (Hastings) (3, 5)
Stuart (10, 21)
Wayne (5, 8)
West Point-Beemer (5, 7)

Northeast Community College (51):

Ainsworth (5, 10)
Bancroft-Rosalie (10, 16)
Battle Creek (4, 9)
Bloomfield (1, 2)
Burwell (5, 6)
Cedar Cath (Hartington) (5, 12)
Chambers (2, 7)
Clarkson (1, 1)
Clearwater-Orchard (3, 9)
Creighton (8, 17)
Crofton (1, 1)
David City (1, 1)
Elgin (5, 14)
Elkhorn Valley (Tilden) (3, 3)
Ewing (1, 1)
Guardian Angels (West Pt.) (1, 3)
Hartington-Newcastle (5, 6)
Home School (1, 5)
Homer (2, 4)
Kearney (1, 1)
Keya Paha (Springview) (3, 7)
Laurel-Concord-Coleridge (2, 2)
Logan View (Hooper) (2, 2)
Meridian (1, 1)
Neligh-Oakdale (7, 16)
Newman Grove (8, 16)
Niobrara (6, 11)
Norfolk (27, 42)
Norfolk Catholic (1, 2)
Oakland-Craig (3, 3)
O'Neill (9, 30)
Palmyra (1, 1)
Pender (3, 7)
Pierce (5, 7)
Plainview (6, 14)
Pope John XXIII (Elgin) (1, 1)
Randolph (4, 4)

South Sioux (45, 63)
St Mary's (O'Neill) (2, 23)
Stanton (6, 10)
Stuart (4, 4)
Tekamah-Herman (1, 2)
Wakefield (4, 9)
Wausa (1, 2)
Wayne (6, 6)
West Boyd (7, 16)
West Holt (2, 4)
West Point-Beemer (19, 33)
Wheeler Central (Bartlett) (1, 1)
Wisner-Pilger (14, 38)
Wynot (6, 18)

Peru State College (30):

Arcadia (2, 4)
Aurora (1, 1)
Beatrice (1, 1)
Brady (1, 2)
Centennial (1, 1)
Crete (1, 1)
Cross Co (Stromsburg) (3, 4)
Deshler (1, 2)
Elwood (1, 2)
Falls City (9, 13)
Homer (1, 1)
HTRS (Humboldt) (5, 11)
Johnson Co (Tecumseh) (4, 8)
Johnson-Brock (5, 8)
Kenesaw (1, 2)
Lewiston (1, 4)
Lourdes Central (NE City) (2, 3)
McCool Junction (1, 1)
Meridian (Daykin) (3, 5)
Milford (3, 3)
Nebraska City (2, 2)
Norris (Firth) (5, 7)
North Bend (1, 2)
Riverside (Cedar Rapids) (15, 21)
Scribner-Snyder (2, 5)
Southern (Wymore) (1, 1)
Syracuse-Dunbar-Avoca (2, 4)
Tri County (Dewitt) (4, 8)
Wallace (1, 1)

Peru State College (cont)

York (15, 26)

Southeast Community College (28):

Ashland-Greenwood (2, 2)

Beatrice (7, 13)

Crete (1, 1)

Falls City (5, 15)

Friend (1, 1)

Heartland (Henderson) (1, 1)

HTRS (Humboldt) (2, 2)

Lincoln East (4, 8)

Lincoln High (4, 10)

Lincoln North Star (41, 67)

Lincoln Northeast (9, 17)

Lincoln Southeast (8, 16)

Lincoln Southwest (7, 11)

Malcolm (1, 2)

McCool Junction (1, 1)

Meridian (Daykin) (3, 4)

Milford (7, 12)

Nebraska City (1, 1)

Norris (Firth) (6, 8)

Pius X (Lincoln) (2, 4)

Plattsmouth (4, 5)

Raymond Central (1, 3)

Southern (Wymore) (5, 10)

Wahoo (4, 10)

Waverly (2, 6)

Wilber-Clatonia (8, 16)

York (15, 21)

Yutan (12, 35)

Univ. of Nebraska at Kearney (8):

Brady (1, 1)

Crete (1, 1)

Hastings (3, 3)

Kearney Catholic (3, 4)

Kearney (1, 2)

Lexington (12, 12)

Wood River (2, 2)

York (1, 1)

Univ. of Nebraska – Lincoln (6):

Gordon-Rushville (1, 1)

Hershey (1, 1)

Omaha Bryan (1, 1)

Ravenna (1, 1)

Seward (1, 1)

Sidney (3, 3)

Univ. of Nebraska at Omaha (23):

Bellevue East (4, 8)

Bellevue West (4, 4)

Blair (1, 2)

Brownell Talbot (Omaha) (1, 1)

Creighton Prep (Omaha) (1, 1)

Crete (1, 1)

Lincoln East (2, 2)

Marian (Omaha) (2, 2)

McCook (1, 1)

Millard South (Omaha) (1, 2)

Millard West (Omaha) (1, 2)

Omaha Benson (11, 15)

Omaha Bryan (39, 48)

Omaha Burke (33, 49)

Omaha Central (17, 24)

Omaha North (13, 20)

Omaha Northwest (17, 26)

Omaha South (75, 104)

Papillion-La Vista (4, 4)

Papillion-La Vista South (3, 3)

Plattsmouth (4, 4)

Ralston (2, 4)

Westside (Omaha) (7, 9)

Wayne State College (11):

Aurora (3, 3)

Cross Co (Stromsburg) (4, 6)

Fullerton (7, 9)

Oakland-Craig (1, 1)

Osmond (1, 2)

Riverside (Cedar Rapids) (9, 14)

Sandy Creek (9, 9)

Schuyler Central (2, 3)

St. Edward (3, 4)

Twin River (Genoa) (1, 1)

Wayne (3, 3)

Western NE Community College (15):

Ainsworth (1, 1)

Alliance (11, 18)

Banner Co (Harrisburg) (1, 2)

Bayard (4, 8)

Bridgeport (1, 2)

Chadron (2, 2)

Elba (2, 4)

Gering (1, 1)

Gordon-Rushville (7, 14)

Hyannis (1, 1)

Minatare (2, 5)

Mitchell (3, 3)

Morrill (3, 4)

Scottsbluff (57, 109)

Sidney (2, 2)

Access College Early 2015-16 Courses Taken by Scholarship Recipients

College (number of different subject areas)

Subject Area (number of scholarships)

Central Community College (25):

Agribusiness (4)
Advanced Manufacturing (19)
Auto Body (35)
Biological Sciences (14)
Chemistry (3)
Construction Tech (10)
Drafting & Design Tech (30)
Early Childhood (1)
Economics (16)
English (203)
Entrepreneurship (1)
History (35)
Health Occupations (51)
Human Services (1)
Information Tech (15)
Media Arts (2)
Mathematics (81)
Physical Education (6)
Philosophy (1)
Physical Sciences (2)
Political Science (31)
Psychology (23)
Sociology (8)
Speech (110)
Welding Tech (56)

Chadron State College (5):

Finance (3)
Health, PE & Recreation (2)
Mathematics (11)
Marketing (1)
Theatre (1)

Creighton (1):

Emergency Medical Services (8)

Hastings College (1)

Chemistry (10)

Metropolitan Comm College (37):

Accounting (1)
Auto Collision Tech (12)
Automotive Tech (6)
Biology (15)
Business Management (3)
Chemistry (2)
Culinary/Hospitality Mngt (20)
Criminal Justice (9)
Early Childhood (89)
Economics (1)
Education (1)
Emergency Medical Services (4)
English (23)
Entrepreneurship (3)
Finance (1)
French (1)
German (1)
Health Info Mngt Systems (7)
History (30)
Horticulture/Land Mngt (55)
Health (5)
Human Relations (4)
Industrial/Commercial Trade (63)
Information Tech (16)
Legal Studies (3)
Mathematics (17)
Photography (1)
Physics (2)
Political Science (1)
Process Operations Tech (12)
Psychology (11)
Sociology (13)
Spanish (4)
Speech – (15)
Video/Audio Communication (10)
Welding (6)
Workplace Skills (2)

Midland University (4):

English (69)
 Earth Science (3)
 History (49)
 Mathematics (1)

History (67)
 Mathematics (20)
 Physics (17)
 Political Science (4)
 Spanish (24)

Mid-Plains Community College (18):

Accounting (2)
 Agriculture (2)
 Biology (21)
 Business (10)
 Chemistry (10)
 English (47)
 History (3)
 Information Tech (3)
 Mathematics (28)
 Music (2)
 Nursing Asst (2)
 Business Office Tech (7)
 Philosophy (2)
 Psychology (6)
 Sociology (1)
 Spanish (5)
 Speech (4)
 Welding (1)

Northeast Community College (30):

Accounting (8)
 Administrative Assistant (6)
 Agriculture (12)
 Biology (23)
 Business (1)
 Building Construction (2)
 Criminal Justice (3)
 Drafting (8)
 Economics (9)
 Education (1)
 English (83)
 Entrepreneurship (3)
 Geography (2)
 History (12)
 Health Education (4)
 Home Economics (1)
 Health/Phys Ed/Rec (14)
 Human Services (1)
 Information Tech (6)
 Mathematics (114)
 Music (3)
 Nurse Aide (44)
 Nursing (15)
 Physics (3)
 Political Science (4)
 Psychology (62)
 Sociology (11)
 Spanish (17)
 Speech (50)
 Welding (1)

NCTA (11):

Agronomy (5)
 Agribusiness Mngt (7)
 Animal Science/Ag Ed (10)
 Biology (2)
 Chemistry (11)
 English (9)
 Horticulture (1)
 History (6)
 Mathematics (5)
 Speech (1)
 Veterinary Tech (5)

Nebraska Wesleyan (11):

Accounting (7)
 Biology (4)
 Chemistry (19)
 Communication Studies (9)
 English (215)
 French (6)

Peru State College (11):

Biological Science (6)
 Business (1)
 Education (1)
 English (44)
 History (18)
 Mathematics (10)

Peru State College (cont)

Political Science (5)
Psychology (48)
Sociology (13)
Spanish (2)
Speech (6)

Southeast Community College (25):

Accounting (3)
Ag Business/Mngt Tech (6)
Automation Tech (2)
Bioscience (5)
Business Admin (12)
Bldg Construction Tech (8)
Comp Aided Design Drafting (1)
Computer Info Tech (9)
Early Childhood Ed (11)
Economics (5)
Education (7)
Electrical Systems Tech (1)
English (62)
Entrepreneurship (3)
Food Service/Hospitality (15)
History (13)
Health (10)
Mathematics (53)
Medical Assisting (6)
Nursing Assistant (11)
Office Professional (1)
Psychology (13)
Spanish (1)
Speech (20)
Welding (24)

Univ. of Nebraska at Kearney (7):

Art (1)
Comp Sci & Info Tech (2)
English (5)
French (6)
German (1)
History (2)
Spanish (9)

Univ. of Nebraska – Lincoln (6):

Animal Science (1)
Criminal Justice (1)
Comp Sci & Engineering (1)
Nutrition/Health Science (1)
Political Science (1)
Psychology (3)

Univ. of Nebraska at Omaha (22):

Art/Art History (2)
Aviation (2)
Biology (17)
Information Science/Tech (13)
Criminal Justice (3)
English (62)
Geography (53)
German (1)
History (17)
Info Assurance Science (8)
Mathematics (23)
Marketing (2)
Philosophy (1)
Physics (5)
Political Science (53)
Psychology (13)
Religion (2)
Sociology (5)
Spanish (32)
Teacher Ed (12)
University Seminar (9)
Writers Workshop (1)

Wayne State College (11):

Business (5)
Chemistry (2)
Communication Arts (1)
English (19)
History (3)
Mathematics (11)
Music (2)
Political Science (2)
Psychology (4)
Sociology (5)
Spanish (1)

Western NE Community College (20):

Art (2)
Auto Body Tech (5)
Biological Sciences (20)
Construction (6)
English (43)
History (6)
Health (18)
Information tech (8)
Mathematics (18)
Music (2)

Nursing Assistant (25)
Physical Education (2)
Personal Development (6)
Physical Education/Coaching (3)
Psychology (2)
Sociology (2)
Spanish (3)
Speech (2)
Statistics (1)
Theatre Arts (2)