



ACCESS COLLEGE EARLY SCHOLARSHIP 2021-22 YEAR-END REPORT

Statutory Authority Neb. Rev. Stat. § 85-2106

**Approved by the Commission
September 8, 2022**

COMMISSIONERS

Gwenn Aspen, Chair
Omaha, Member-at-Large

Dr. Paul Von Behren, Vice-Chair
Fremont, District 3

Tim Daniels
Omaha, Member-at-Large

Dr. Deborah Frison
Omaha, District 2

Dr. Dennis Headrick
Lincoln, District 1

Mary Lauritzen
West Point, Member-at-Large

Molly O'Holleran
North Platte, District 6

W. Scott Wilson
Plattsmouth, Member-at-Large

STAFF

Dr. Michael Baumgartner
Executive Director

Jeremy Chancellor
Facilities Officer

Dr. Kathleen Fimple
Academic Programs Officer

Jill Heese
Research Coordinator

Kadi Lukesh
*Bookkeeper, Budget Coordinator
& Office Manager*

J. Ritchie Morrow
Financial Aid Officer

Helen Pope
Executive Assistant

Gary Timm
*Chief Finance & Administrative
Officer*

Joe Velasquez
Database Manager

Coordinating Commission for Postsecondary Education
140 N. 8th Street, P.O. Box 95005, Lincoln, NE 68509-5005
Phone: (402) 471-2847

The Commission's reports are available online at ccpe.nebraska.gov/reports

Access College Early (ACE) Scholarship Program

Authorized by the Nebraska Legislature in 2007, the Access College Early (ACE) Scholarship Program pays tuition and mandatory fees for qualified, low-income high school students to enroll in college courses from Nebraska colleges or universities, either through dual enrollment or early enrollment agreements with these institutions. High school students may apply for funding under this program by completing the ACE Student Application, which is reviewed by the Coordinating Commission for award consideration.

To qualify for the scholarship, the student or student's family must be approved to participate in one of the federal need-based government programs listed below, have experienced an extreme hardship that affects family income, or be participating in a designated Career Education program as established by the Nebraska Department of Education.

- Free or Reduced Price Lunch Program
- Supplemental Security Income
- Temporary Assistance to Needy Families (TANF)
- Supplemental Nutrition Assistance Program (SNAP)
- Special Supplemental Assistance Program (WIC)

The objective of the ACE program is to encourage well-prepared high school students from low-income families to enroll in college courses. High school students who are awarded an ACE scholarship to complete college courses while in high school can decrease their time to graduation and consequently the cost of a degree. However, students must pay to take advantage of these college course opportunities to receive college credit that can jumpstart their college careers. For students who are economically disadvantaged, the financial constraints are great.

Research shows that high school students who take college courses while in high school remain in school and graduate at higher rates, enroll in college at increased rates, and return for their college sophomore years at higher rates. In Nebraska, public high school ACE recipients are 35.3 percentage points more likely to go on to college than other public high school students from low-income families.

As can be seen from the charts starting on page 7, public high school students who are ACE scholarship recipients continue on to college at a much greater rate than public high school students from low-income families that do not receive ACE scholarships. In fact, public high school ACE scholarship recipients continue on to college at a higher rate than public high school students from non-low-income families.

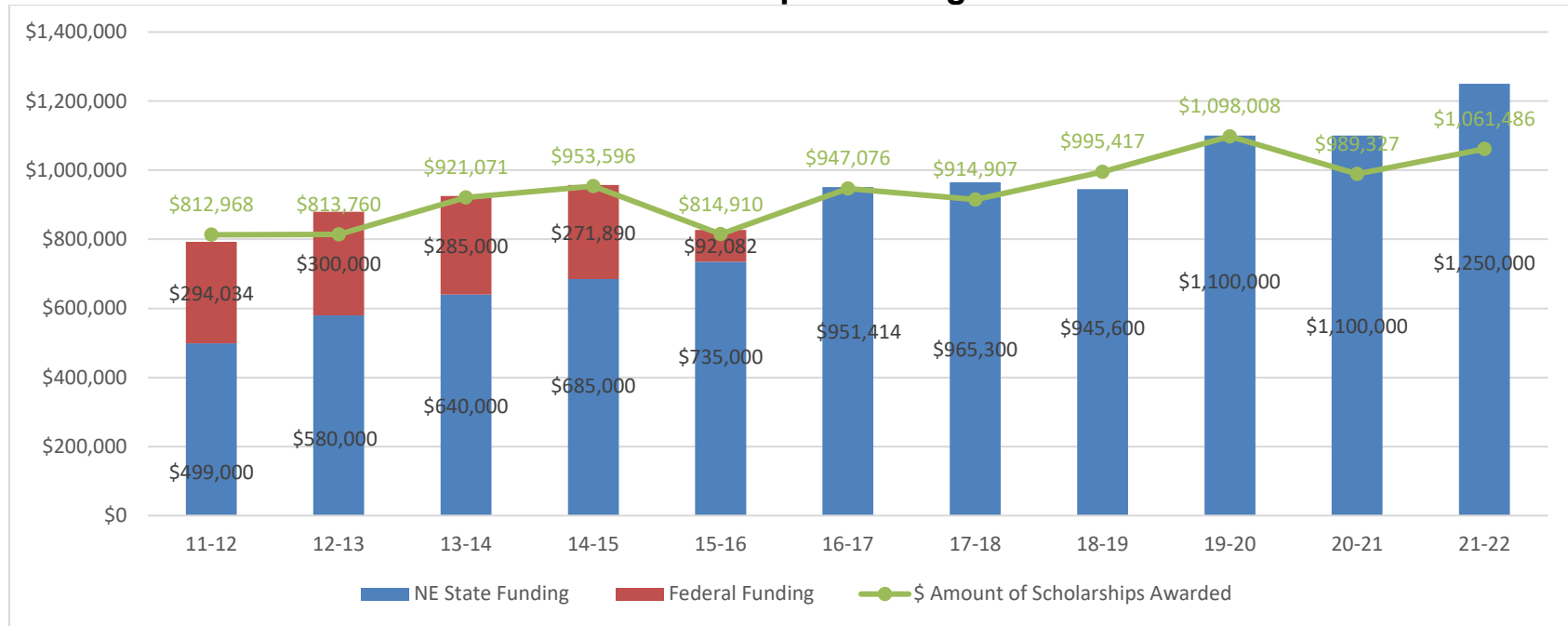
Distribution of the 2021-22 Access College Early Scholarship

The Access College Early (ACE) Scholarship pays the tuition and mandatory fees of eligible Nebraska high school students taking dual-enrollment and early-admit college courses at participating Nebraska colleges and universities¹. For 2021-22 the ACE Scholarship program was funded with \$1,250,000 General funds appropriated by the Legislature.

Nebraska colleges and universities enrolled 2,683 low-income, Nebraska high school students from 222 high schools who received 5,152 ACE Scholarships in 2021-22. The total amount awarded was \$1,061,486.47, with the average award per scholarship equaling \$206.03.

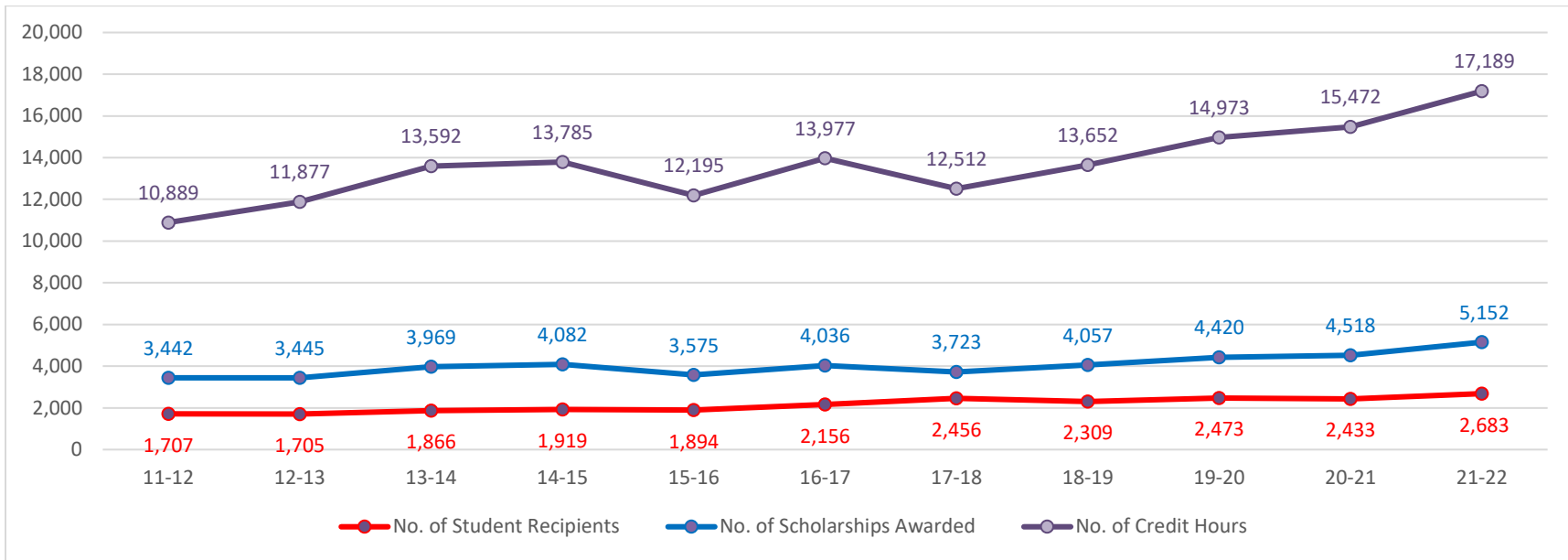
The ACE Scholarship allowed these high school students from low-income families to enroll in 17,188.50 credit hours of college course work. Seventy-four percent of the grades received by these students were a B or better. (See page 10)

Total ACE Scholarships Funding & Awarded

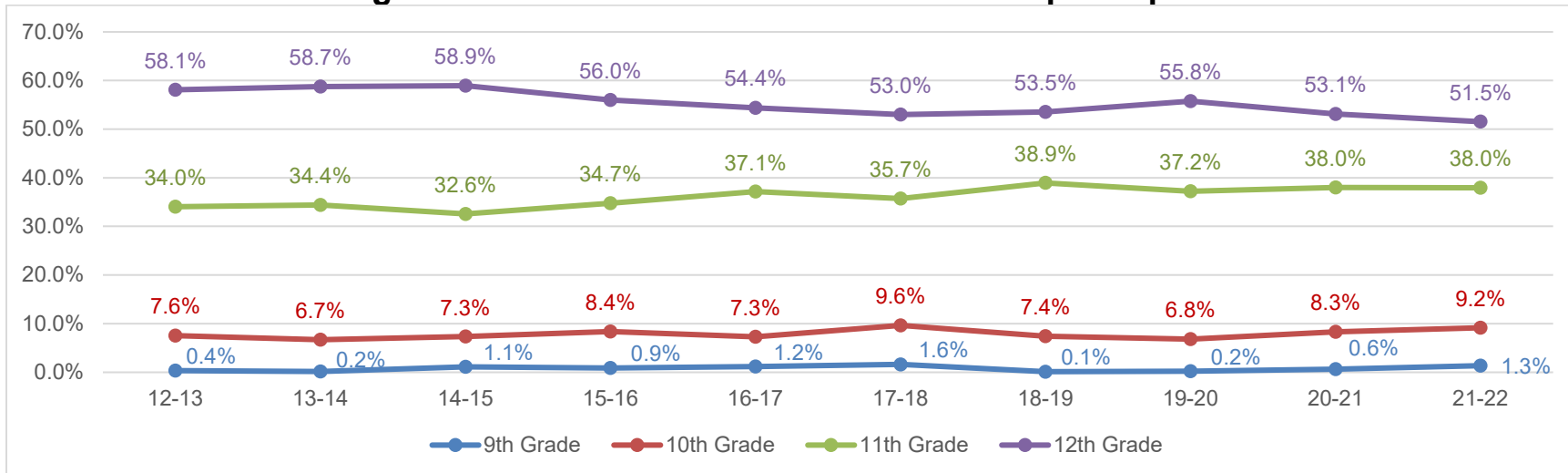


¹ The number of scholarships awarded to a student is limited each year based on available funding and an estimated number of students who will be applying. For 2021-22 students were limited to three scholarships for the year.

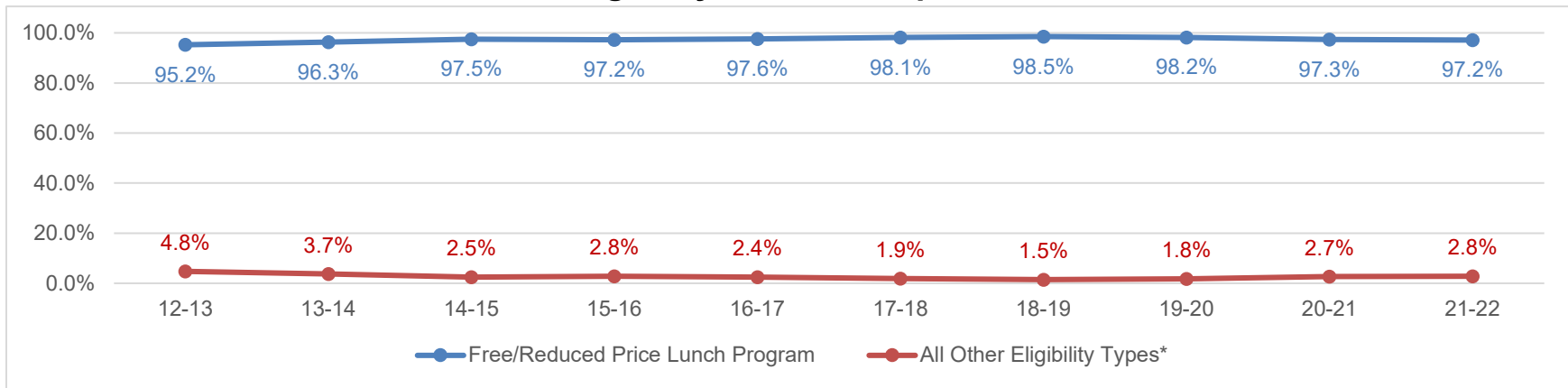
ACE Scholarship Recipients, Scholarships Awarded, and Credit Hours Taken



High School Grade Level of ACE Scholarship Recipients

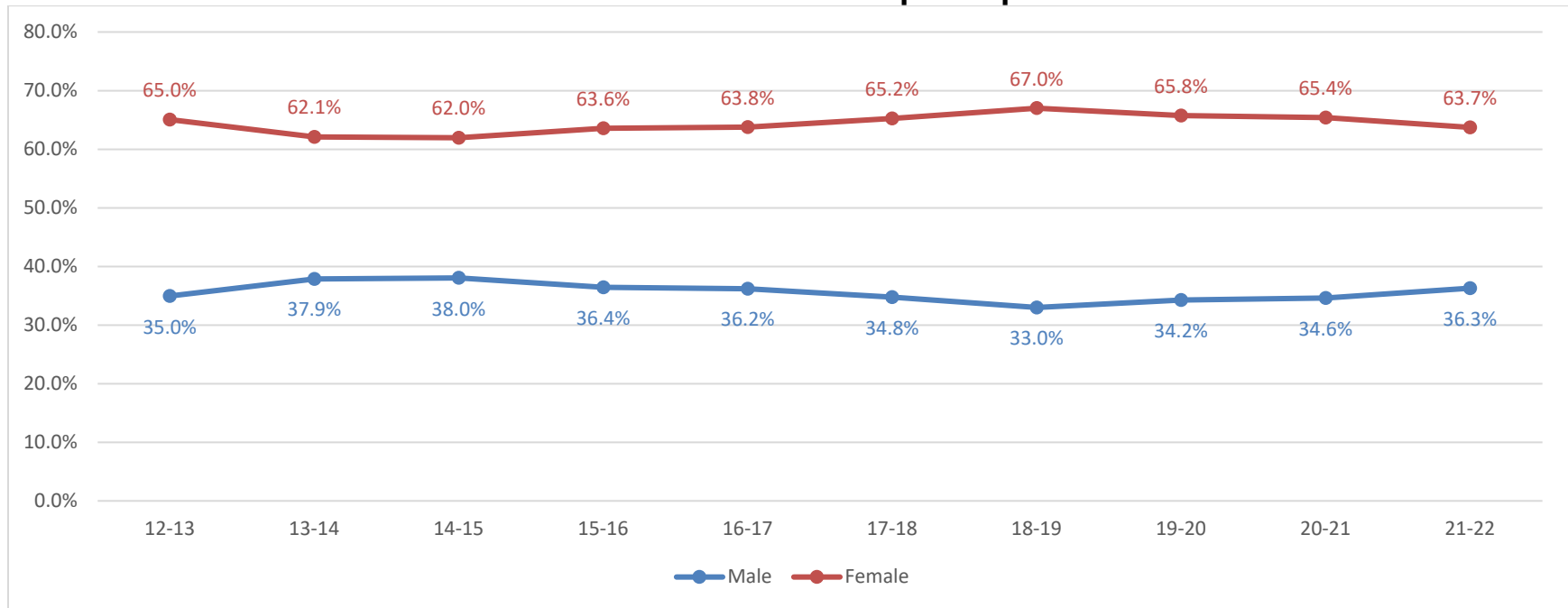


Eligibility of ACE Recipients

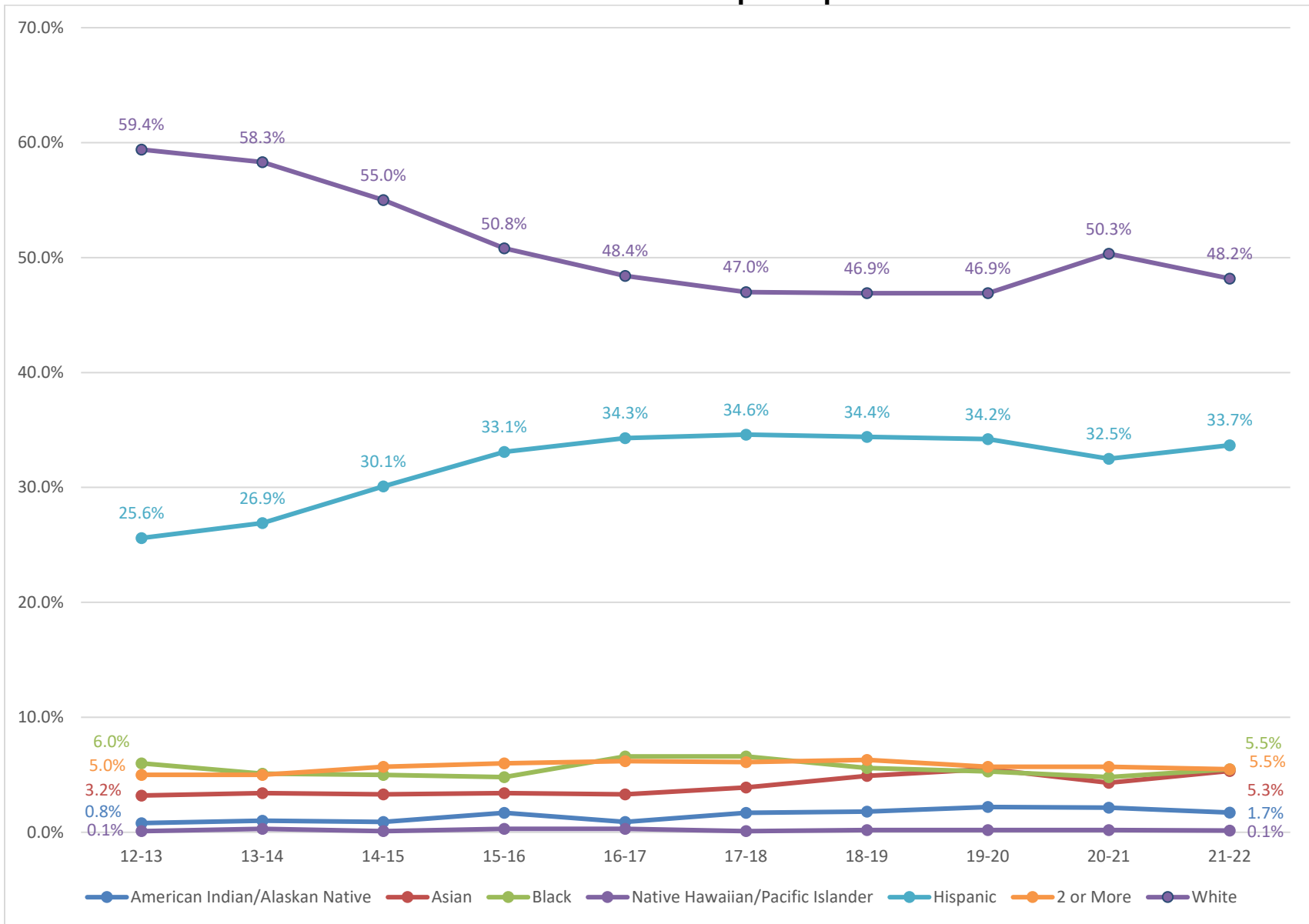


*All Other Eligibility Types Include: CPSE – Career Program of Study; SNAP – Supplemental Nutrition Assistance Program; SSI – Supplemental Security Income; TANF – Temporary Assistance for Needy Families; WIC – Special Supplemental Nutrition Program; Other Hardship

Gender of ACE Scholarship Recipients



Race of ACE Scholarship Recipients



College Continuation Rates of ACE Scholarship Recipients

Since 2009, the Coordinating Commission has conducted research to determine how many of the high school seniors who receive ACE scholarships continue on to college compared to other low-income and non-low-income graduates of Nebraska's public high schools.

For this research, a college continuation rate is defined as the percentage of public high school graduates who were enrolled in college within one year of their high school graduation. For example, for the public high school seniors who received ACE scholarships during 2019-20, the college continuation rate is the percentage of these students who were enrolled in college any time between June 1, 2020, and May 31, 2021.

Using student records and summary reports from the Nebraska Department of Education (NDE) and enrollment records from the National Student Clearinghouse (NSC), the Commission calculates the college continuation rates by gender for the public high school seniors who were ACE scholarship recipients.

The Commission then compares the college continuation rates for the seniors who received ACE scholarships while attending public high schools to the college continuation rates for other low-income and non-low-income graduates of Nebraska's public high schools.

Low-income students are defined as students who are approved to receive free or reduced-price school lunches.

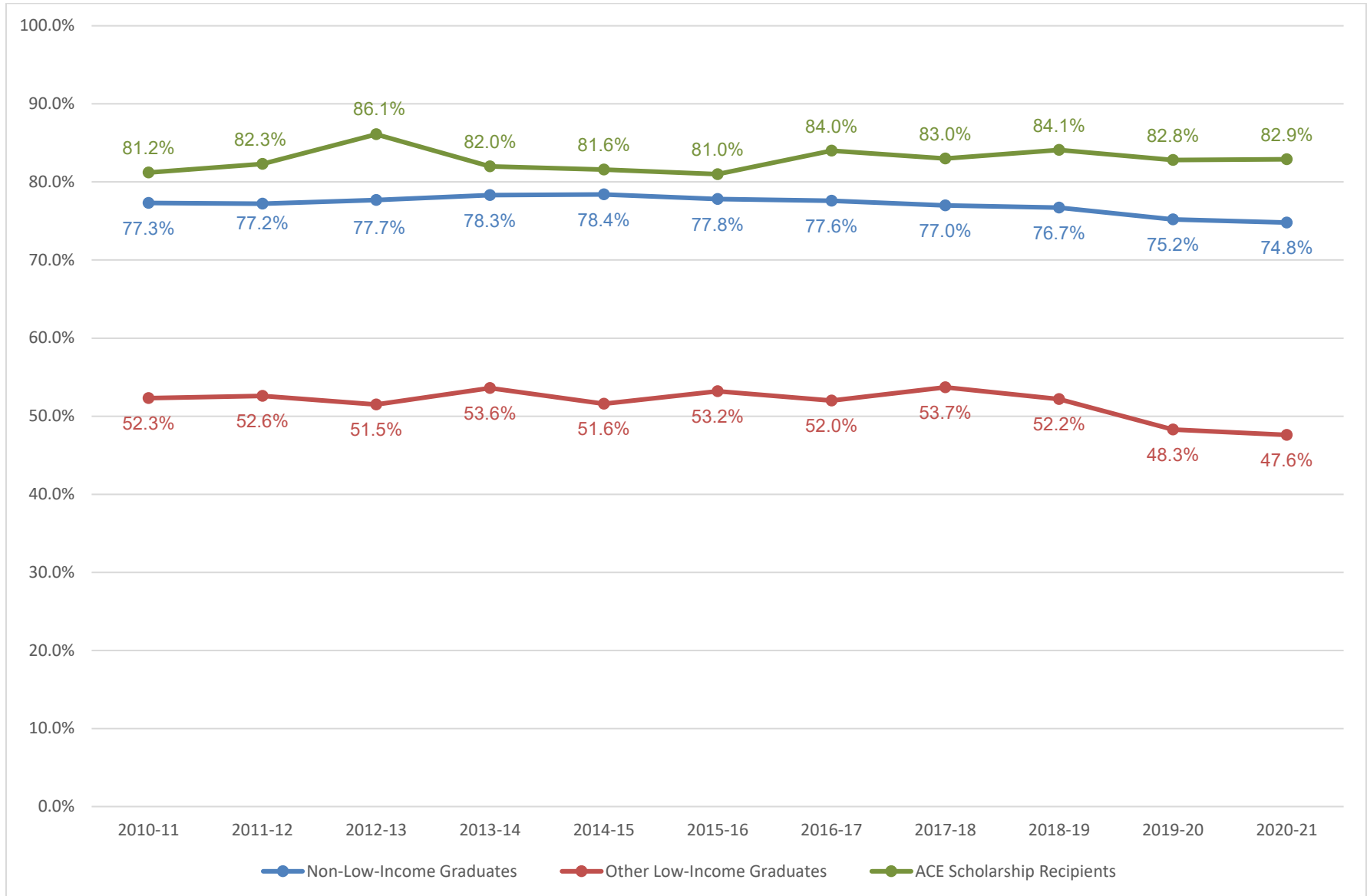
Non-low-income students are students who are not approved for free or reduced-price school lunches.¹

Since the Commission relies on college enrollment records from the NSC, students who continue to college at non-NSC-reporting institutions are classified as not continuing on to college. As a result, college continuation rates reported here are underreported to some degree.

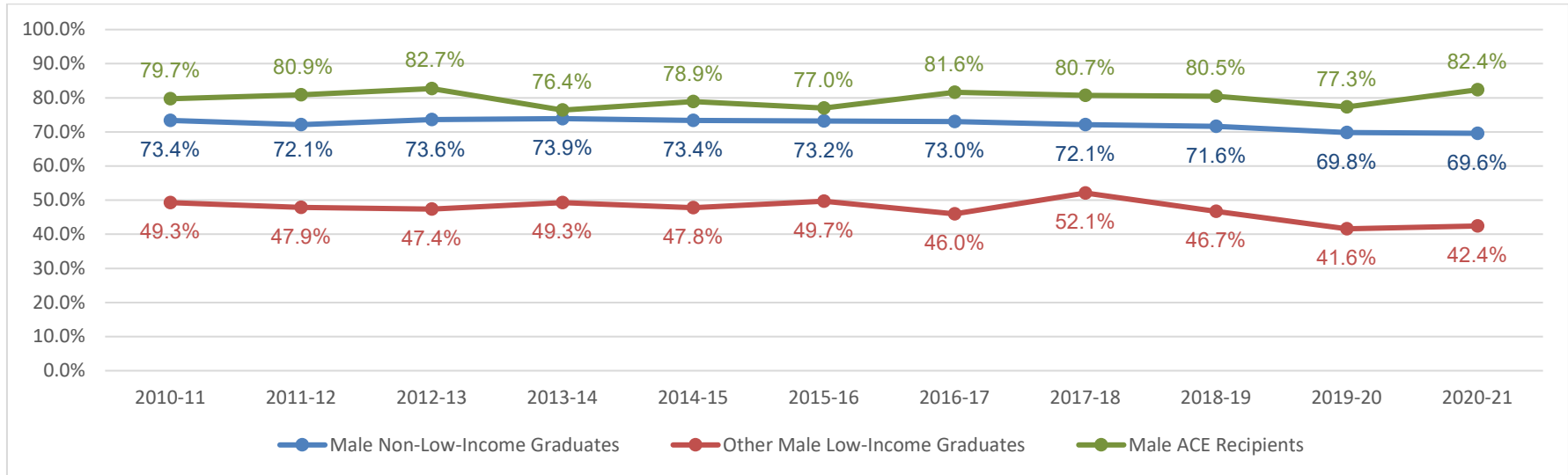
Students who were homeschooled or attended nonpublic (private) high schools are not included in this phase of the research because the NDE does not have sufficient records for the Commission to compute college continuation rates for nonpublic high school students.

¹ Non-low-income students for this study include at least some students who live in low-income households but who did not apply for free or reduced-price school lunches. Since participation in the free or reduced-price school lunch program is the only indicant of household income in the student records maintained by the Nebraska Department of Education, low-income students in the non-low-income category cannot be identified and excluded for the purposes of analysis.

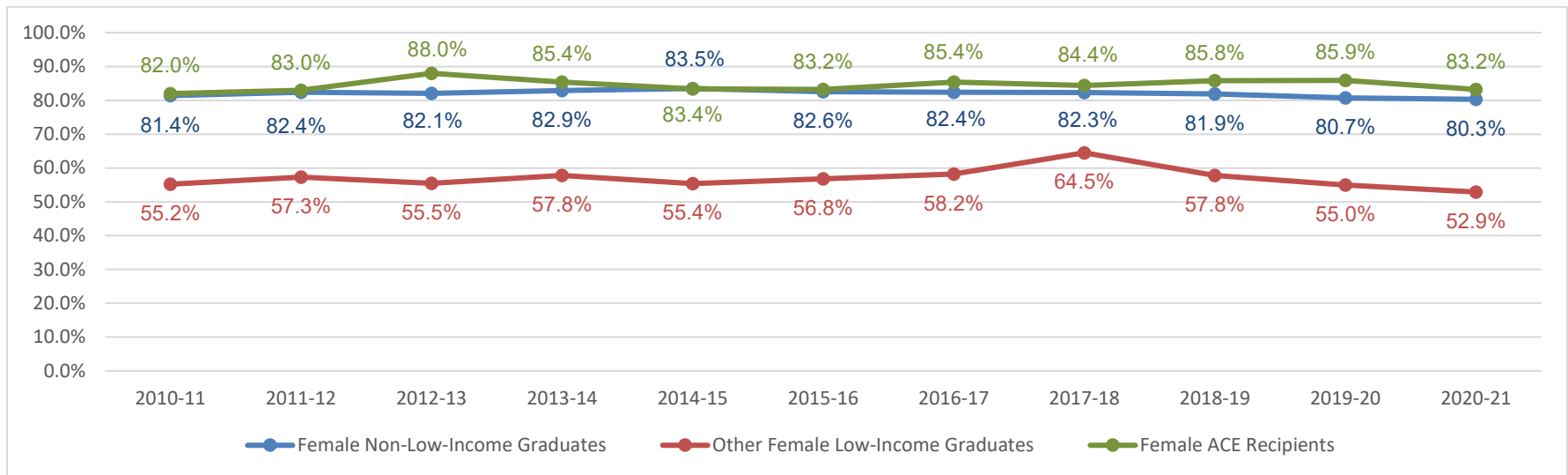
Public High School College Continuation Rate



Male Public High School College Continuation Rate



Female Public High School College Continuation Rate



2021-22 Access College Early Scholarship

College	Amount Awarded	Number of Students	Number of Scholarships	Average per Scholarship
Bryan College of Health (BCH)	\$680.00	4	4	\$170.00
Central Community College (CCC)	\$206,664.00	563	989	\$208.96
Chadron State College (CSC)	\$18,211.53	30	52	\$350.22
Concordia University (CU)	\$4,260.00	13	16	\$266.25
Little Priest Tribal College (LPTC)	\$2,700.00	4	5	\$540.00
Metropolitan Community College (MCC)	\$47,710.00	384	571	\$83.56
Midland University (MU)	\$21,250.00	65	85	\$250.00
Mid-Plains Community College (MPCC)	\$53,378.00	86	183	\$291.68
NE College of Technical Agriculture (NCTA)	\$556.00	1	3	\$185.33
Nebraska Indian Community College (NICC)	\$7,499.00	15	17	\$441.12
Northeast Community College (NECC)	\$111,602.00	375	715	\$156.09
Nebraska Wesleyan University (NWU)	\$160,170.00	323	487	\$328.89
Peru State College (PSC)	\$15,000	55	78	\$192.31
Southeast Community College (SCC)	\$50,983.50	151	281	\$181.44
University of Nebraska at Kearney (UNK)	\$16,200.00	59	72	\$225.00
University of Nebraska-Lincoln (UNL)	\$990.00	2	3	\$330.00
University of Nebraska at Omaha (UNO)	\$175,937.14	395	657	\$267.79
Western Nebraska Community College (WNCC)	\$100,075.30	255	499	\$200.55
Wayne State College (WSC)	\$67,767.00	316	436	\$155.43

NOTE: Tuition and fee charges are set by each institution, so Average per Scholarship varies by institution.

NOTE 2: Number of students on the above and following charts do not total the number of student recipients of 2,683 on page 3 due to students taking classes at multiple institutions.

NOTE 3: Data related to colleges where the number of students in the above chart equaled five or less were masked in the Grades Earned per Course chart, the Gender Race/Ethnicity chart, and the Grade & Eligibility chart on the following pages.

**2021-22 Access College Early Scholarship
Grades Earned per Course**

College	A+	A	A-	B+	B	B-	C+	C	C-	D+	D	D-	F	W	IP**	Hours^
BCH@																
CCC	67	351		128	179		48	81		12	29		49	37	8	3,070
CSC		32			12			6			1		1			164
CU		8	2	2	4											48
LPTC@																
MCC		251			141			106			28		28	17		2,641
MU	4	36	4	1	23			11			5		1			257
MPCC	16	81		22	22		11	15		2	4		2	3	6	572
NCTA@																
NICC		12					2	2			1					63
NECC	156	240		70	83		34	40		12	13		20	40	6	2,147.5
NWU	54	144	50	36	85	27	28	30	2	6	6	1	9	9		1,686
PSC		50		4	17		3	3					1			250
SCC	64	73		43	27		19	19		11	6		12	5	3	874.5
UNK	34	14	5	6	5	1	2	3					1	1		218
UNL@																
UNO	40	223	28	44	180	14	13	70	5	4	25	2	3	6		2,156
WNCC	45	122	58	31	66	26	24	37	19	10	16	7	19	18	1	1,146.5
WSC		177	27	13	85	13	16	52	4	7	21	4	12	5		1,630

** Course work in progress

^ Total number of credit hours paid for by the scholarship

@ Data masked due to low numbers

**2021-22 Access College Early Scholarship
Gender & Race**

College	Female	Male	American Indian/Alaskan Native	Asian	Black	Native Hawaiian/Pacific Islander	Hispanic	2 or More	White
BCH@									
CCC	332	231	4	3	20	1	250	30	255
CSC	18	12	2	1	1		3	2	21
CU	7	6						1	12
LPTC@									
MCC	242	142	7	26	37	1	152	26	135
MU	44	21	1	3	8		39	5	9
MPCC	54	32	1	1	1		11	5	67
NCTA@									
NICC	10	5	10				1	2	2
NECC	244	131	8	10	8		73	17	259
NWU	197	126	2	29	22	1	68	19	182
PSC	37	18		2	1		11	1	40
SCC	95	56	2	5	6		25	8	108
UNK	44	15	1	2			33	2	21
UNL@									
UNO	293	102	5	72	48		153	34	83
WNCC	161	94	8	1	4		80	4	158
WSC	207	109	3	3	13	1	170	10	116

@ Data masked due to low numbers

**2021-22 Access College Early Scholarship
Grade & Eligibility* Criteria**

College	9th	10th	11th	12th	CPSE	F/R	Other Hardship	SNAP	SSI	TANF	WIC
BCH@											
CCC		15	224	324		545	4	12	1		1
CSC			11	19		30					
CU	1	1	2	9		12	1				
LPTC@											
MCC	16	25	161	182		367	3	9	3	1	1
MU			61	4		65					
MPCC		5	31	50		84			2		
NCTA@											
NICC		3	6	6		15					
NECC		14	145	216		369	2	2	2		
NWU		12	146	165		311	3	6	3		
PSC			31	24		55					
SCC		2	50	99		148	1	2			
UNK		1	20	38		56		3			
UNL@											
UNO	6	102	90	197		379	5	11			
WNCC		17	94	144		253			2		
WSC	13	49	140	114		311		5			

*CPSE – Career Program of Study; F/R – Free or Reduced Price Lunch Program; SNAP – Supplemental Nutrition Assistance Program; SSI – Supplemental Security Income; TANF – Temporary Assistance for Needy Families; WIC – Special Supplemental Nutrition Program

@ Data masked due to low numbers

Access College Early 2021-22 Number of Scholarships Awarded by High School

College (number of high schools)
High School (number of students, number of scholarships)

Bryan College of Health (4):

Boys Town (1, 1)
Gordon-Rushville (1,1)
Seward (1, 1)
Wilber-Clatonia (1, 1)

Central Community College (64):

Adams Central (Hastings) (6, 15)
Alma (1, 2)
Arapahoe (3, 5)
Arcadia (6, 14)
Aurora (4, 6)
Blue Hill (5, 12)
Callaway (1, 1)
Central Catholic (Grand Island) (5, 11)
Central City (14, 20)
Central Valley (Greeley) (5, 5)
Clarkson (3, 4)
Columbus (32, 63)
Cornerstone (Bellevue) (1, 3)
Cozad (6, 8)
Cross Co (Stromsburg) (5, 6)
David City (1, 3)
Deshler (1, 1)
Doniphan-Trumbull (2, 3)
East Butler (Brainard) (3, 7)
Elba (1, 1)
Elm Creek (7, 17)

Elwood (2, 2)
Eustis-Farnam (1, 1)
Franklin (1, 1)
Fullerton (2, 3)
Gibbon (8, 12)
Grand Island (128, 188)
Hampton (3, 5)
Harvard (14, 27)
Hastings, (14, 16)
Holdrege (3, 8)
Home (3, 7)
Howells-Dodge (1, 1)
Humphrey (4, 12)
Kearney (22, 24)
Kearney Catholic (1, 2)
Lakeview (Columbus) (5, 13)
Leigh (2, 5)
Lexington (129, 249)
Litchfield (2, 4)
Loup City (3, 8)
Northwest (Grand Island) (16, 30)
Ord (12, 29)
Osceola (1, 3)
Overton (1, 1)
Palmer (7, 18)
Pleasanton (9, 17)
Ravenna (3, 8)
Red Cloud (5, 8)

Central Community College (cont.)

Riverside (Cedar Rapids) (1, 1)
Sandy Creek (Fairfield) (2, 5)
Scotus Central (Columbus) (6, 10)
S-E-M (Sumner) (2, 5)
Shelby-Rising City (2, 4)
Shelton (4, 5)
Silver Lake (Roseland) (1, 1)
Southern Valley (Oxford) (2, 2)
Spalding Academy (2, 4)
St Edward (2, 5)
Sutton (4, 7)
Thedford (2, 3)
Twin River (Genoa) (6, 9)
Wilcox-Hildreth (4, 5)
Wood River (9, 14)

Chadron State College (3):

Chadron (21, 42)
Gordon-Rushville (2, 2)
Scottsbluff (7, 8)

Concordia (5):

Centennial (2, 3)
Home School (5, 6)
Lincoln Southwest (1, 1)
Seward (1, 2)
Wilber-Clatonia (4, 4)

Little Priest Tribal College (1)

Homer (4, 5)

Metropolitan Community College (27):

Arlington (8, 18)
Bellevue East (3, 4)
Bellevue West (1, 1)
Blair (1, 1)
DC West (Valley) (15, 30)
Fort Calhoun (6, 12)
Fremont (106, 185)
Gretna (11, 25)
Home School (5, 11)
Logan View (Hooper) (4, 5)
Mercy (Omaha) (2, 2)
Millard North (Omaha) (2, 6)
Millard South (Omaha) (6, 15)
North Bend (1, 2)
Omaha Benson (32, 35)
Omaha Bryan (57, 67)
Omaha Burke (20, 24)
Omaha Central (27, 27)
Omaha North (10, 13)
Omaha Northwest (2, 2)
Omaha South (49, 55)
Papillion-LaVista (1, 2)
Papillion-LaVista South (3, 9)
Platteview (3, 5)
Ralston (5, 7)
Roncalli (Omaha) (1, 3)
Westside (Omaha) (3, 5)

Midland University (4):

Omaha Bryan (23, 33)
Omaha Burke (18, 23)
Omaha Central (2, 2)
Omaha South (22, 27)

Mid-Plains Community College (18):

Broken Bow (10, 17)
Callaway (4, 11)
Chase Co (Imperial) (3, 7)
Dundy Co (Benkelman) (7, 12)
Maxwell (6, 13)
McCook (5, 8)
Medicine Valley (Curtis) (1, 2)
Mullen (5, 10)
North Platte (27, 64)
Ogallala (5, 12)
Paxton (2, 3)
Perkins Co (Grant) (3, 7)
Southern Valley (Oxford) (1, 2)
Southwest (Bartley) (1, 2)
St Patrick's (North Platte) (1, 2)
Thedford (2, 4)
Valentine (2, 6)
Wallace (1, 1)

Nebraska College of Technical Agriculture (1):

Ord (1, 3)

Nebraska Indian Community College (2)

Bancroft-Rosalie (5, 6)
Niobrara (10, 11)

Nebraska Wesleyan (52):

Alma (6, 11)
Bishop Neumann (Wahoo) (1, 2)
Blair (2, 4)
Bridgeport (16, 16)
Centennial (Utica) (2, 2)
Central Valley (Greeley) (5, 9)

Columbus (2, 2)
Cozad (1, 1)
Creighton Prep (Omaha) (2, 2)
Elkhorn (Omaha) (1, 2)
Franklin (4, 9)
Guardian Angels (West Point) (3, 4)
Hampton (1, 1)
Hastings (4, 10)
Hemingford (2, 2)
Lakeview (Columbus) (1, 1)
Lincoln Christian (1, 2)
Lincoln East (10, 19)
Lincoln High (23, 39)
Lincoln North Star (87, 146)
Lincoln Northeast (8, 12)
Lincoln Southeast (5, 6)
Lincoln Southwest (9, 10)
Marian (Omaha) (1, 1)
Mercy (Omaha) (5, 7)
Minatare (1, 1)
Mullen (1, 1)
Norfolk (4, 4)
Norris (8, 15)
Oakland-Craig (1, 1)
Overton (1, 1)
Papillion-LaVista South (3, 4)
Pius X (Lincoln) (3, 3)
Platteview (3, 4)
Plattsmouth (1, 1)
Red Cloud (1, 1)
Riverside (Cedar Rapids) (5, 11)
Roncalli (Omaha) (1, 2)
Scotus Central (Columbus) (2, 3)
S-E-M (Sumner) (1, 1)

Nebraska Wesleyan University (cont.)

Sidney (11, 13)
Sioux Co (Harrison) (4, 4)
South Sioux (38, 38)
Southern Valley (Oxford) (6, 14)
St Cecilia (Hastings) (1, 2)
Stuart (8, 11)
Thayer Central (Hebron) (1, 2)
Waverly (5, 11)
Wayne (1, 2)
West Point-Beemer (6, 13)
Westside (Omaha) (3, 3)
Wisner-Pilger (1, 1)

Northeast Community College (52):

Ainsworth (4, 6)
Bancroft-Rosalie (37, 75)
Battle Creek (9, 20)
Bloomfield (10, 21)
Boone Central (Albion) (1, 1)
Boyd Co (Spencer) (14, 36)
Burwell (14, 24)
Cedar Catholic (Hartington) (1, 1)
Chambers (3, 6)
Creighton (13, 34)
Cross County (Stromsburg) (1, 1)
Deshler (1, 2)
Elgin (3, 5)
Emerson-Hubbard (4, 9)
Guardian Angels Catholic (West Point) (3, 7)
Hartington-Newcastle (9, 20)
Home (1, 1)
Homer (7, 13)
Howells-Dodge (2, 5)

Keya Paha Co (Springview) (2, 4)
Laurel-Concord-Coleridge (4, 9)
Leigh (4, 8)
Madison (15, 25)
Neligh-Oakdale (1, 3)
Newman Grove (3, 6)
Niobrara (4, 8)
Norfolk (41, 73)
Norfolk Catholic (3, 6)
North Bend (3, 3)
Northeast (Lyons) (2, 6)
Oakland-Craig (4, 5)
O'Neill (6, 13)
Pender (2, 4)
Pierce (3, 4)
Plainview (7, 13)
Ponca (3, 6)
Randolph (1, 1)
Rock Co (Bassett) (5, 13)
South Sioux (32, 45)
Stanton (5, 9)
Stuart (12, 20)
Summerland (4, 8)
Tekamah-Herman (1, 2)
Verdigre (2, 2)
Wakefield (7, 11)
Wausa (3, 3)
Wayne (5, 5)
West Holt (Atkinson) (14, 27)
West Point-Beemer (22, 46)
Wheeler Central (Bartlett) (1, 1)
Wisner-Pilger (9, 20)
Wynot (8, 19)

Peru State College (18):

Auburn (1, 1)
Aurora (1, 1)
Beatrice (4, 8)
Centennial (Utica) (1, 1)
Crete (4, 8)
Cross Co (Stromsburg) (3, 5)
Fairbury (1, 1)
Homer (1, 1)
HTRS (Humboldt) (1, 1)
Johnson Co (Tecumseh) (2, 3)
Lourdes Central (Nebraska City) (1, 1)
Nebraska City (1, 1)
North Bend (3, 8)
Riverside (Cedar Rapids) (1, 1)
Southern (Wymore) (1, 1)
Tri County (Dewitt) (11, 16)
Wausa (4, 4)
York (14, 15)

Southeast Community College (38):

Ashland-Greenwood (2, 5)
Beatrice (5, 6)
Crete (2, 2)
Deshler (7, 16)
Eustis-Farnam (1, 2)
Fairbury (4, 12)
Falls City (18, 40)
Friend (1, 3)
Heartland (Henderson) (1, 1)
Home (2, 3)
HTRS (Humboldt) (3, 7)
Johnson Co (Tecumseh) (1, 2)
Johnson-Brock (5, 8)

Lincoln North Star (7, 8)
Lincoln Northeast (3, 5)
Lincoln Southeast (3, 5)
Lincoln Southwest (2, 3)
Lourdes Central (Beatrice) (1, 1)
McCool Junction (1, 2)
Mead (3, 7)
Meridian (Daykin) (1, 2)
Norris (Firth) (8, 9)
Palmyra (1, 1)
Pawnee City (3, 6)
Pius X (Lincoln) (1, 2)
Plattsmouth (1, 1)
Raymond Central (3, 5)
Seward (2, 2)
Southern (Wymore) (1, 1)
Sterling (1, 1)
Thayer Central (Hebron) (1, 1)
Wahoo (8, 20)
Waverly (5, 9)
Weeping Water (2, 6)
Wilber-Clatonia (1, 1)
Wilcox-Hildreth (1, 1)
York (38, 74)
Yutan (1, 1)

University of Nebraska at Kearney (6):

Central City (10, 11)
Chadron (1, 1)
Elwood (3, 5)
Gibbon (2, 3)
Kearney (11, 20)
Lexington (32, 32)

University of Nebraska – Lincoln (2):

Aurora (1, 2)
Bishop Neuman (Wahoo) (1, 1)

University of Nebraska at Omaha (29):

Bellevue East (5, 6)
Bellevue West (10, 23)
Creighton Prep (Omaha) (2, 3)
Crete (2, 2)
Gross Catholic (Omaha) (1, 1)
Douglas Co West (Valley) (1, 1)
Duchesne (Omaha) (1, 2)
Elkhorn (Omaha) (2, 2)
Home (1, 1)
Lincoln East (1, 2)
Marian (Omaha) (1, 1)
Mercy (Omaha) (2, 2)
Millard North (Omaha) (2, 5)
Millard South (Omaha) (3, 4)
Millard West (Omaha) (6, 12)
Omaha Benson (66, 97)
Omaha Bryan (44, 66)
Omaha Burke (40, 65)
Omaha Central (21, 34)
Omaha North (20, 40)
Omaha Northwest (32, 71)
Omaha South (90, 139)
Papillion-La Vista (6, 10)
Papillion-La Vista South (5, 12)
Platteview (1, 1)
Plattsmouth (3, 4)
Ralston (9, 17)
Roncalli (Omaha) (1, 1)
Westside (Omaha) (16, 33)

Wayne State College (25):

Arcadia (1, 1)
Bancroft-Rosalie (12, 12)
Boone Central (Albion) (4, 8)
Creighton (1, 1)
Emerson-Hubbard (1, 1)
Fullerton (2, 5)
Grand Island (188, 285)
Harvard (4, 4)
Howells-Dodge (1, 1)
Minden (2, 2)
Neligh-Oakdale (2, 3)
Norfolk (4, 6)
Norfolk Catholic (1, 2)
Northeast (Lyons) (1, 1)
Oakland-Craig (2, 4)
Pierce (1, 1)
Ponca (4, 4)
Riverside (Cedar Rapids) (1, 1)
Shelton (3, 3)
South Sioux (55, 60)
St Edward (4, 4)
Twin River (Genoa) (5, 9)
Wausa (7, 8)
Wayne (6, 6)
West Point-Beemer (4, 4)

Western Nebraska Community College (19):

Alliance (3, 7)
Banner Co (Harrisburg) (5, 9)
Bayard (1, 1)
Bridgeport (27, 48)
Chadron (4, 5)
Cody-Kilgore (1, 1)

Western Nebraska Community College (cont.)

Crawford (7, 12)

Garden County (Oshkosh) (4, 8)

Gering (34, 70)

Gordon-Rushville (20, 39)

Hemingford (3, 4)

Hyannis (1, 3)

Leyton (1, 3)

Minatare (2, 2)

Mitchell (11, 22)

Potter-Dix (2, 4)

Scottsbluff (122, 250)

Sidney (6, 10)

South Platte (Big Springs) (1, 1)

Access College Early 2021-22 Courses Taken by Scholarship Recipients

College (number of different subject areas)
Subject Area (number of scholarships)

Bryan College of Health (1):

Health (4)

Central Community College (35):

Accounting (2)
Agriculture Sciences (2)
Adv Mfg Design Tech (9)
Auto Body (9)
Biological Sciences (27)
Business Admin (15)
Business Tech (3)
Chemistry (12)
Construction Tech (14)
Criminal Justice (22)
Drafting & Design Tech (8)
Early Childhood (1)
Economics (4)
Electronics (45)
English (183)
Entrepreneurship (22)
Geography (1)
History (43)
Health Occupations (101)
Information Tech (20)
Mathematics (164)
Media Arts (1)
Music (21)
Nutrition (4)

Philosophy (2)
Physical Education (6)
Physical Science (4)
Personal Development (3)
Political Science (7)
Psychology (53)
Sociology (21)
Spanish (1)
Speech (102)
Theatre (3)
Welding Tech (54)

Chadron State College (8):

Accounting (2)
English (3)
Finance (11)
History (6)
Mathematics (19)
Marketing (2)
Music (3)
Psychology (6)

Concordia (5)

English (9)
Psychology (4)
Spanish (3)

Little Priest Tribal College (3)

Psychology (1)
Sociology (2)
Speech (2)

Metropolitan Community College (36):

Accounting (3)
Biology (12)
Business Admin (5)
Certified Nursing Asst (3)
Chemistry (9)
Civil Engineering Tech (6)
Construction & Bldg Science (1)
Criminal Justice (24)
Design/Media Arts (10)
Early Childhood (32)
Economics (15)
Education (1)
Emergency Medical Services (7)
English (139)
Entrepreneurship (3)
Exploratory Studies (3)
Finance (56)
Geography (1)
Health Info Mngt Systems (9)
History (21)
Health (11)
Human Resources (3)
Industrial/Commercial Trade (27)
Information Tech (40)
Japanese (1)
Marketing (1)
Mathematics (47)
Music (6)

Photography (1)
Political Science (3)
Psychology (4)
Sociology (29)
Spanish (5)
Speech (14)
Video/Audio Communication (2)
Welding (1)

Midland University (2):

Chemistry (3)
History (82)

Mid-Plains Community College (16):

Art (1)
Auto Body (1)
Biology (23)
Business Admin (1)
Chemistry (3)
English (65)
History (17)
Information Tech (3)
Mathematics (30)
Office Tech (3)
Political Science (4)
Psychology (8)
Sociology (2)
Spanish (3)
Speech (11)
Welding (8)

Nebraska College of Technical Agriculture (2):

Agribusiness Mngt Systems (1)
Animal Science (2)

Nebraska Indian Community College (3)

Native America Studies (7)
Nursing (5)
Political Science (5)

Nebraska Wesleyan (15):

Art (3)
Art History (1)
Biology (16)
Business Admin (9)
Chemistry (9)
Communication Studies (8)
Economics (29)
English (204)
French (6)
History (107)
Mathematics (54)
Physics (13)
Political Science (5)
Religion (2)
Spanish (12)

Northeast Community College (31):

Accounting (6)
Administrative Professional (1)
Agriculture (9)
Biology (22)
Building Construction (31)
Broadcasting (6)
Business (7)
Criminal Justice (4)
Early Childhood (7)
Economics (2)
Engineering (3)

English (137)
Entrepreneurship (1)
Graphic Design (2)
Geography (2)
History (30)
Health Education (34)
Health/Physical Ed/Rec (15)
Information Tech (11)
Mathematics (124)
Music (3)
Nurse Aide (36)
Paramedic (3)
Physical Therapy Asst (1)
Political Science (17)
Psychology (75)
Sociology (21)
Spanish (9)
Speech (75)
Utility Line (1)
Welding (20)

Peru State College (9):

Biological Science (10)
Business Administration (1)
English (32)
Mathematics (9)
Psychology (8)
Sociology (3)
Speech (13)
Statistics (1)
Theatre (1)

Southeast Community College (23):

Accounting (1)
Agriculture (8)
Automotive Tech (2)
Bioscience (3)
Biotechnology (1)
Business Admin (6)
Chemistry (4)
Criminal Justice (3)
Early Childhood Ed (5)
Economics (3)
Education (4)
English (69)
Entrepreneurship (1)
Culinary/Hospitality (6)
Geo Information Tech (1)
History (16)
Health (8)
Human Services (1)
Information Tech (7)
Mathematics (50)
Medical Assisting (1)
Medical Lab Tech (2)
Music (1)
Physical Education (1)
Political Science (10)
Psychology (25)
Religious Studies (1)
Sociology (3)
Speech (28)
Welding (10)

University of Nebraska at Kearney (8):

Biology (1)
Chemistry (1)
Cyber Systems (1)
English (24)
History (8)
Political Science (1)
Spanish (32)
Teacher Education (4)

University of Nebraska – Lincoln (3):

Art History (1)
Computer Sci & Engineering (1)
Food Science & Tech (1)

University of Nebraska at Omaha (29):

Anthropology (3)
Art/Art History (4)
Aviation (5)
Biology (48)
Biomechanics (6)
Communication Disorders (1)
Computer Science (11)
Cybersecurity (5)
Economics (10)
English (149)
French (14)
Geography (90)
German (1)
Health & Kinesiology (7)
History (28)
Information Science & Tech (20)
Kinesiology (1)
Latino/Latin Am Studies (1)

University of Nebraska at Omaha (cont.)

Mathematics (42)
Management (3)
Philosophy (1)
Physics (33)
Political Science (87)
Public Health & Behavior (12)
Psychology (5)
Religion (9)
Spanish (40)
Teacher Ed (20)
Writer's Workshop (2)

Wayne State College (17):

Art (1)
Biology (4)
Business Admin (5)
Communication Arts (46)
Earth Science (13)
Education (50)
English (72)
History (27)
Human Services (10)
Mathematics (80)
Music (1)
Physical Education (3)
Physical Sciences (3)
Physics (1)
Political Science (42)
Psychology (5)
Sociology (4)
Spanish (69)

Western Nebraska Community College (29):

Accounting (6)
Art (2)
Auto Body Tech (17)
Automotive Tech (29)
Biological Sciences (25)
Business Admin (3)
Criminal Justice (9)
Diesel, Truck & Heavy Equipment Tech (6)
Economics (1)
Education (6)
Emergency Medical Services (4)
English (97)
History (17)
Health (41)
Humanities (6)
Human Services (5)
Information Tech (21)
Mathematics (57)
Medical Lab Tech (8)
Nursing (1)
Nursing Assistant (25)
Physical Education (2)
Political Science (3)
Personal Development (3)
Psychology (35)
Sociology (3)
Spanish (32)
Speech (6)
Welding (28)