



**NEBRASKA OPPORTUNITY GRANT
2017-18 YEAR-END REPORT**

COMMISSIONERS

W. Scott Wilson, Chair
Plattsmouth, Member-at-Large

Dr. Deborah A. Frison, Vice-Chair
Omaha, District 2

Colleen Adam
Hastings, District 5

Gwenn Aspen
Omaha, Member-at-Large

Dr. John Bernthal
Lincoln, District 1

Dr. Ronald Hunter
Hay Springs, District 6

Mary Lauritzen
West Point, Member-at-Large

Dwayne Probyn
Papillion, District 4

Dr. Paul Von Behren
Ames, District 3

STAFF

Dr. Michael Baumgartner
Executive Director

Miste Adamson
Administrative Assistant

Dr. Kathleen Fimple
Academic Programs Officer

Jill Heese
Research Coordinator

Kadi Lukesh
*Bookkeeper, Budget Coordinator
& Office Manager*

J. Ritchie Morrow
Financial Aid Officer

Helen Pope
Executive Assistant

Gary Timm
Chief Finance & Administrative Officer

Joe Velasquez
Database Manager

Mike Wemhoff
Facilities Officer

Coordinating Commission for Postsecondary Education
140 N. 8th Street, P.O. Box 95005, Lincoln, NE 68509-5005
Phone: (402) 471-2847

The Commission's reports are available online at ccpe.nebraska.gov/reports

NEBRASKA OPPORTUNITY GRANT PROGRAM

The Nebraska Opportunity Grant (NOG) program provides financial aid to students who are residents of Nebraska; have not earned a bachelor's, graduate, or professional degree; have high financial need (defined as having an expected family contribution equal to or less than 110% of the maximum family contribution that qualifies students for a federal Pell Grant); and who are attending eligible Nebraska colleges and universities to earn a degree or credential. The NOG program uses information from the federal Free Application for Federal Student Aid (FAFSA) as the basis for determining eligibility; there is no separate application.

NOG is the State of Nebraska's only need-based financial aid program for postsecondary students and is funded through General fund appropriations and lottery funds. As of the 2016-17 academic year, when analyzing national need-based undergraduate grant dollars per undergraduate enrollment, Nebraska ranked 35th in the country.

The NOG program is a decentralized financial aid program. The commission allocates state funding to participating institutions based on a statutory formula that takes into account the proportion of all eligible students attending each institution and their tuition and fees (capped at tuition and fees at the University of Nebraska Lincoln) and verifies student eligibility but does not determine individual student award amounts or dictate how many eligible students receive NOG grants. Participating institutions award NOG grants to eligible students subject to eligibility criteria, maximum award limits, and available allocations.

For the 2017-18 NOG program award year:

- \$17,392,498 was awarded
- 12,849 students received a Nebraska Opportunity Grant
- \$1,353.61 was the average grant award

Pages 3-6 include charts showing the number of Nebraska students who received a federal Pell grant and the unmet financial need of these students as reported by the institutions. The US Department of Education defines financial need as the difference between how much college costs and how much a student and the student's family can pay towards those costs. The difference between financial need and the amount of financial aid offered by the college to the student to cover the financial need is considered unmet financial need. Students must cover their unmet need from either private loans or out-of-pocket funds.

The remainder of the report reflects various details specifically related to the NOG program, broken out by sector. Of particular interest is the table on page 13 showing the percentage of eligible students that received a NOG award by sector. The table demonstrates both that the NOG program is an important part of the overall financial aid strategy of postsecondary institutions and that many eligible students are not served by the NOG program due to lack of funding.

NOG Program Participating Institutions

University of Nebraska

- University of Nebraska at Kearney
- University of Nebraska – Lincoln
- University of Nebraska Medical Center
- University of Nebraska at Omaha
- Nebraska College of Technical Agriculture

State Colleges

- Chadron State College
- Peru State College
- Wayne State College

Community Colleges

- Central Community College
- Metropolitan Community College
- Mid-Plains Community College
- Northeast Community College
- Southeast Community College
- Western Nebraska Community College

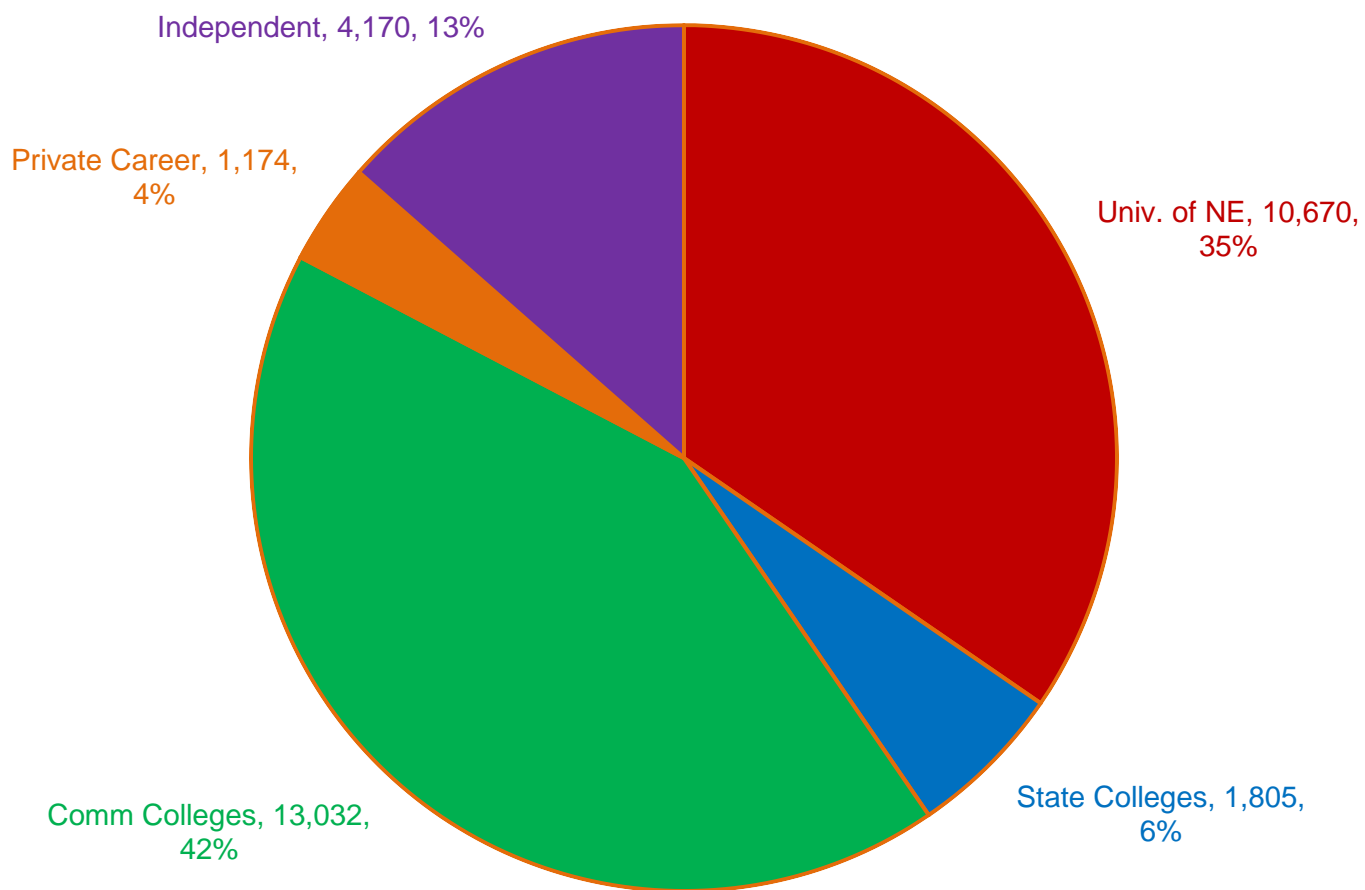
Private Career Colleges

- Capitol School of Hairstyling
- College of Hair Design
- Creative Center
- Joseph's College of Beauty
- Kaplan University (Lincoln & Omaha)
- La'James College
- National American University
- Xenon International School of Hair

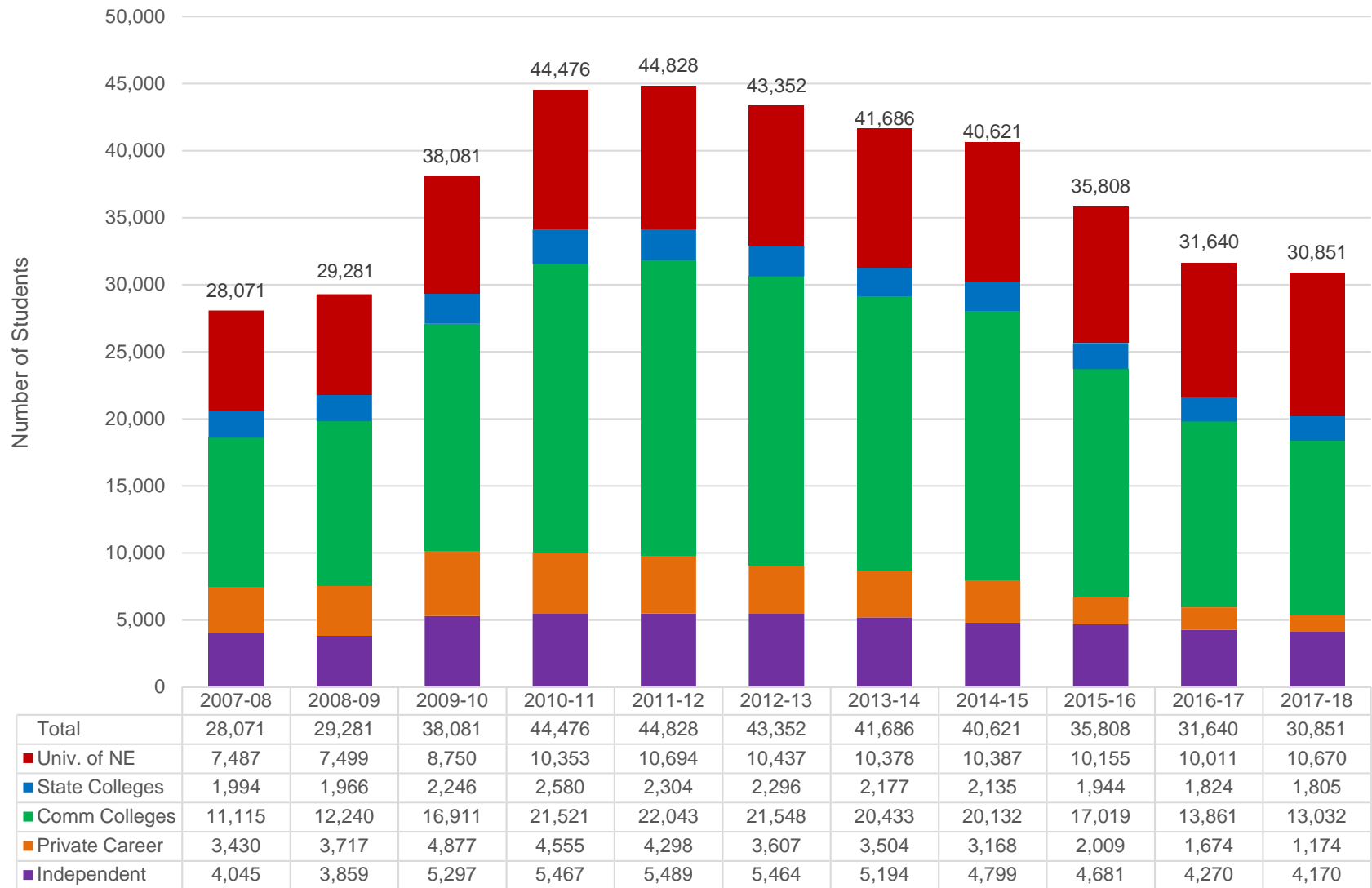
Independent Colleges & Universities

- Bellevue University
- Bryan College of Health Science
- Clarkson College
- College of Saint Mary
- Concordia University
- Creighton University
- Doane University
- Grace University
- Hastings College
- Little Priest Tribal College
- Midland University
- Nebraska Christian College
- Nebraska Methodist College
- Nebraska Wesleyan University
- Omaha School of Massage Therapy
- Union College
- York College

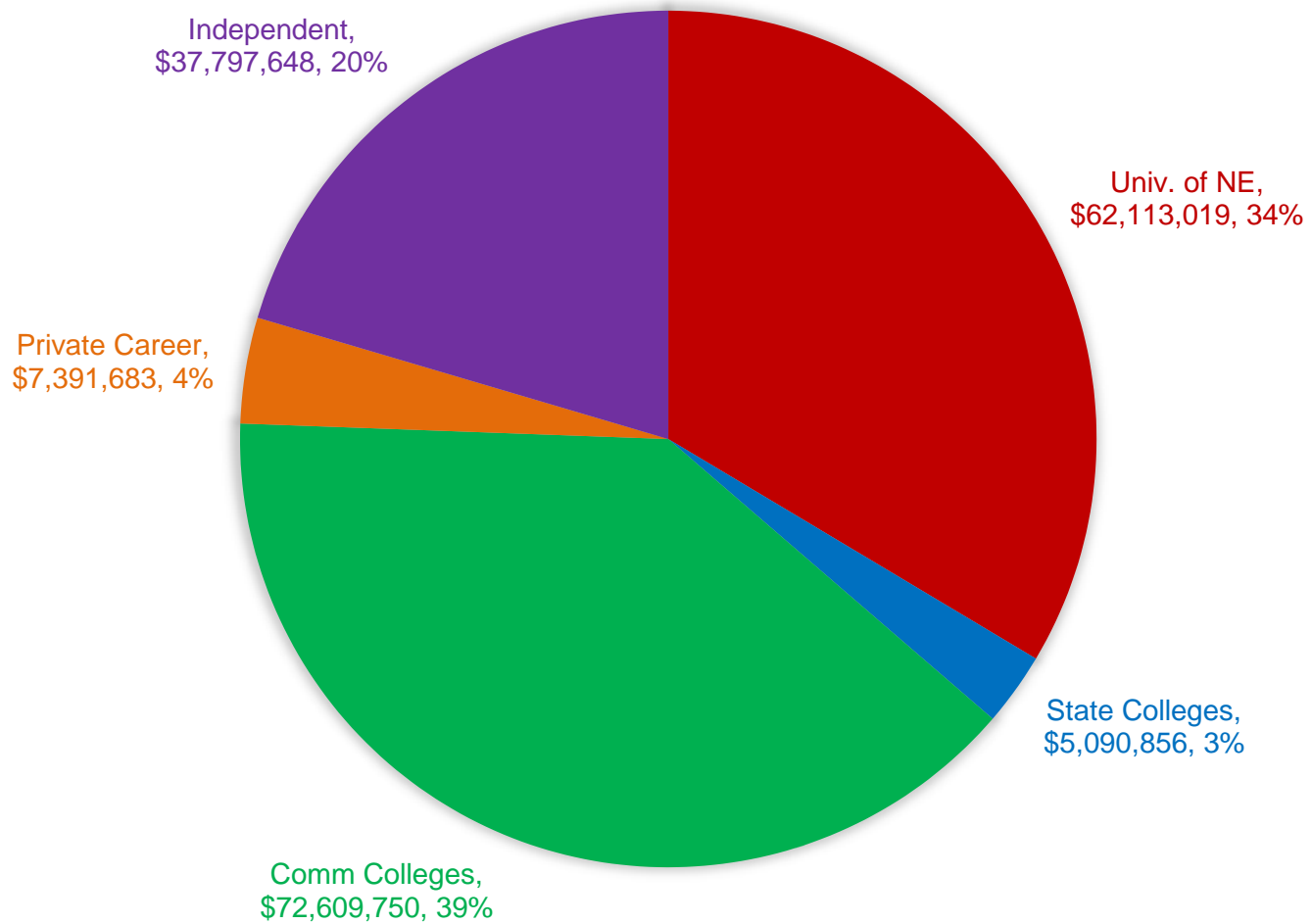
**2017-18 Nebraska Resident Pell Grant-Eligible Students by Sector
(percentage is of total enrollment)**



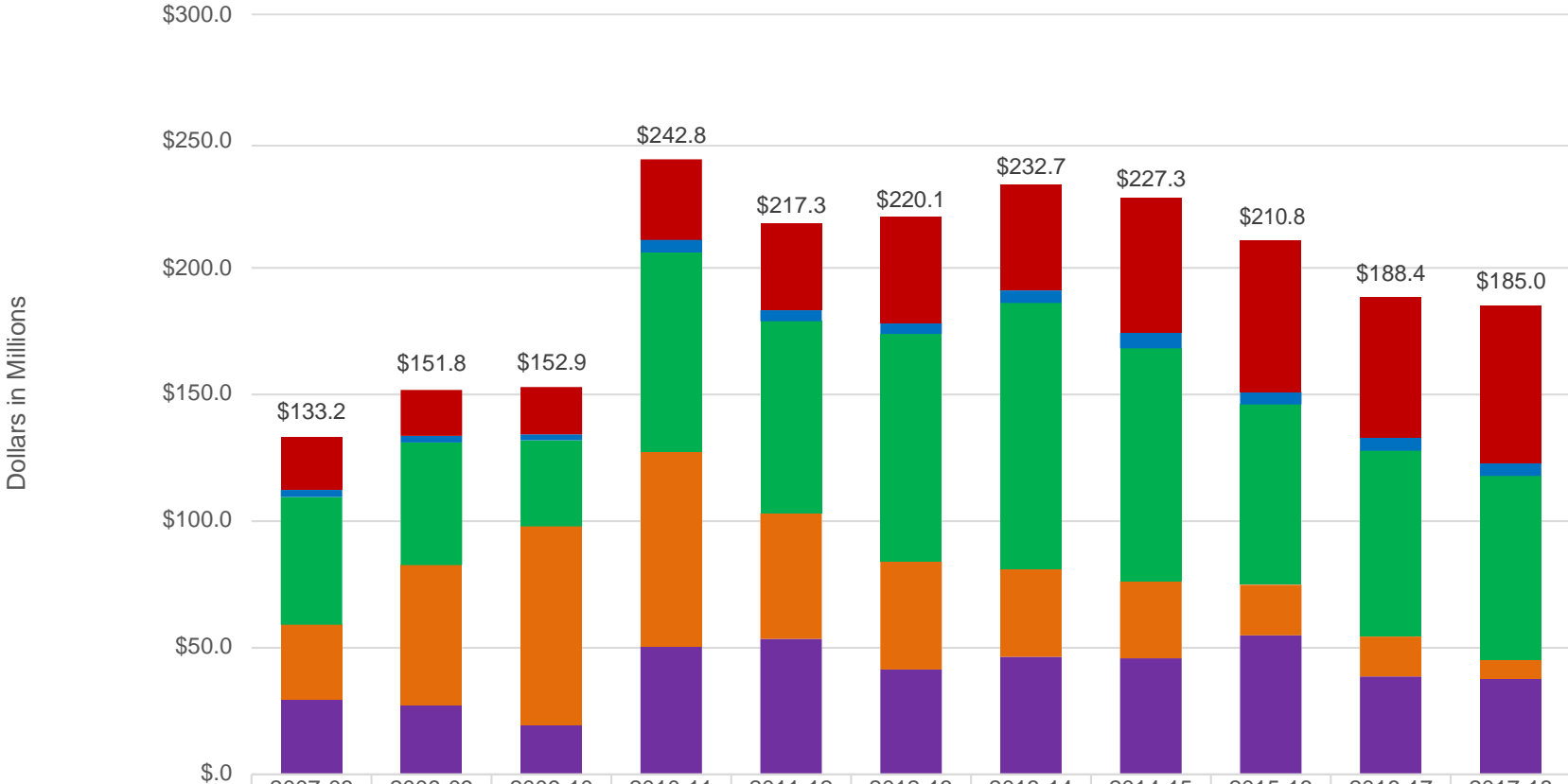
Nebraska Resident Pell Grant-Eligible Students by Sector



**2017-18 UNMET NEED OF PELL GRANT-ELIGIBLE STUDENTS
(PERCENTAGE IS OF TOTAL AMOUNT)**



Nebraska Resident Pell Grant-Eligible Unmet Need by Sector



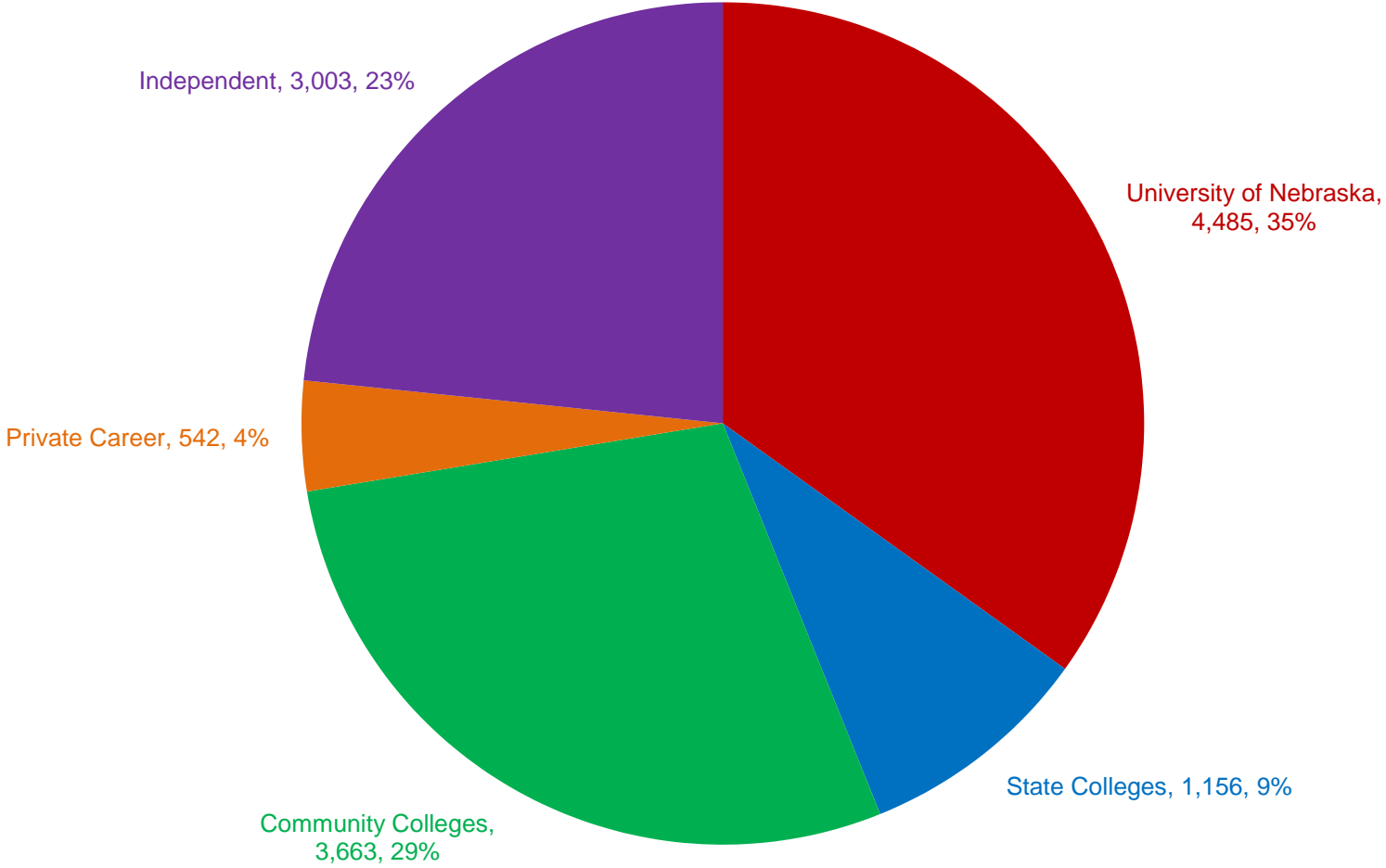
	2007-08	2008-09	2009-10	2010-11	2011-12	2012-13	2013-14	2014-15	2015-16	2016-17	2017-18
Total	\$133.2	\$151.8	\$152.9	\$242.8	\$217.3	\$220.1	\$232.7	\$227.3	\$210.8	\$188.4	\$185.0
■ Univ. of NE	\$20.9	\$18.2	\$18.7	\$31.8	\$34.1	\$41.8	\$41.7	\$53.0	\$59.8	\$55.3	\$62.1
■ State Colleges	\$2.8	\$2.6	\$2.3	\$5.1	\$4.3	\$4.4	\$4.9	\$6.1	\$4.9	\$5.3	\$5.1
■ Community Colleges	\$50.4	\$48.4	\$34.0	\$78.7	\$75.8	\$89.9	\$104.9	\$92.0	\$71.2	\$73.3	\$72.6
■ Private Career	\$29.6	\$55.5	\$78.6	\$76.6	\$49.6	\$42.6	\$34.8	\$30.5	\$20.0	\$15.8	\$7.4
■ Independent	\$29.5	\$27.1	\$19.3	\$50.6	\$53.5	\$41.4	\$46.4	\$45.8	\$54.9	\$38.6	\$37.8

NOG Yearly Process

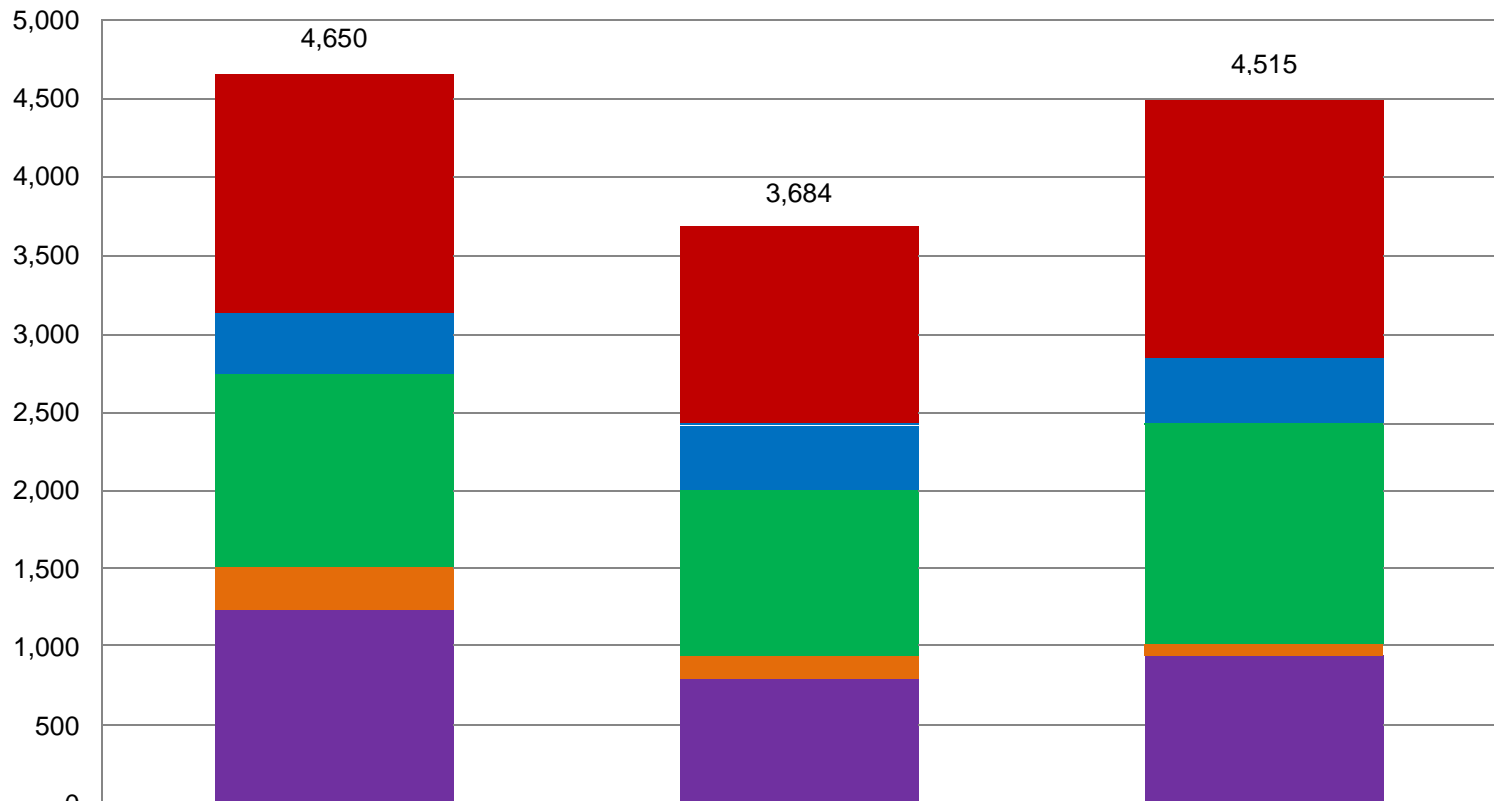
Each year the Commission allocates NOG funding that has been appropriated by the Legislature to participating institutions. In order to provide these institutions timely information, funding estimates are used until a final appropriation bill is approved in late spring. Allocations are calculated using the formula found in Neb. Rev. Stat. § 85-1912. Below are key events of the NOG process:

- Tentative allocation using estimated state General and lottery funds is sent out to institutions in January for the next academic year
- NOG applications to participate are sent to institutions and returned to the Commission in June
- Data from the applications, including the calculation of full-time-equivalent eligible students and tuition and fees charged, are used in the allocation formula
- Final lottery distribution received by the Commission in June
- Final allocation notice sent to institutions in July
- Institutions submit a list of recommended students for Commission approval
 - Must be done prior to disbursement to student
 - Send in multiple lists throughout the year
 - Funds sent at least twice a year based on approved list of students
 - Final submission must be submitted by May 31st of the academic year
- Commission performs audits of student eligibility at each participating institution every fall

2017-18 NOG Recipients by Sector

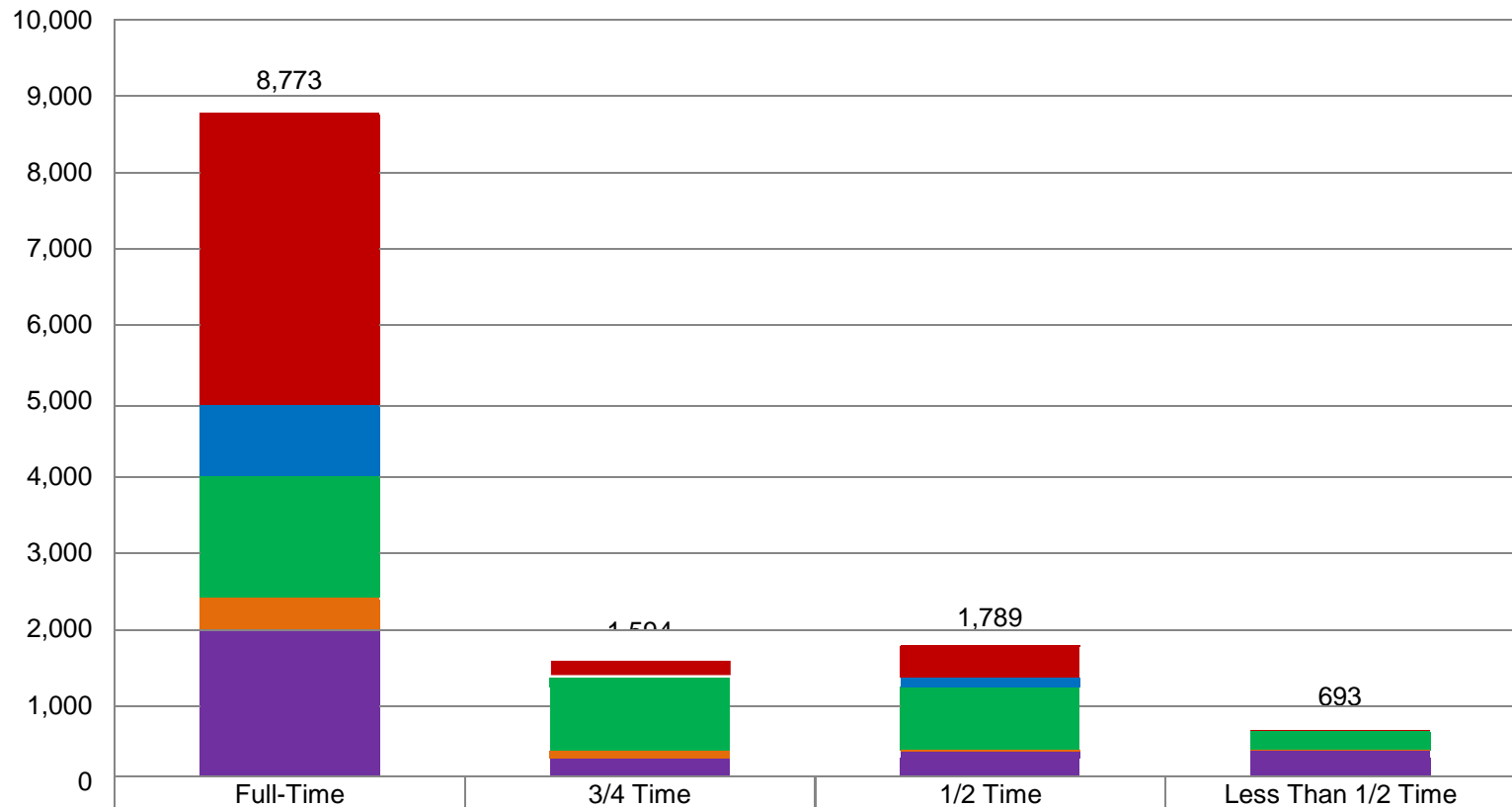


2017-18 NOG Recipients by Family Income



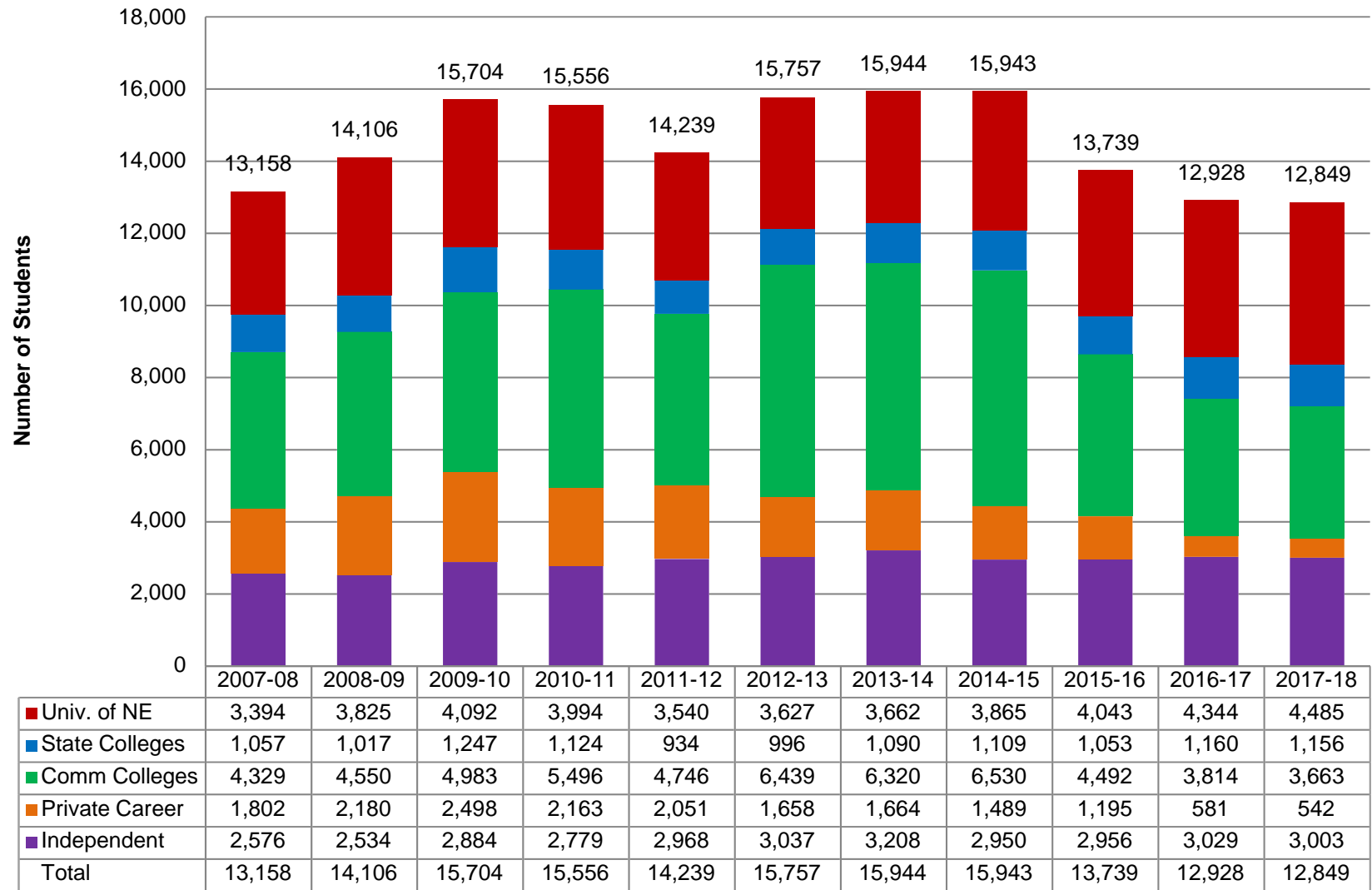
	0-\$19,999	\$20,000-\$39,999	\$40,000+
■ Univ. of NE	1,523	1,293	1,669
■ State Colleges	384	355	417
■ Comm Colleges	1,189	1,106	1,368
■ Private Career	320	147	75
■ Independent	1,234	783	986
Total	4,650	3,684	4,515

2017-18 Recipients by Sector by Enrollment

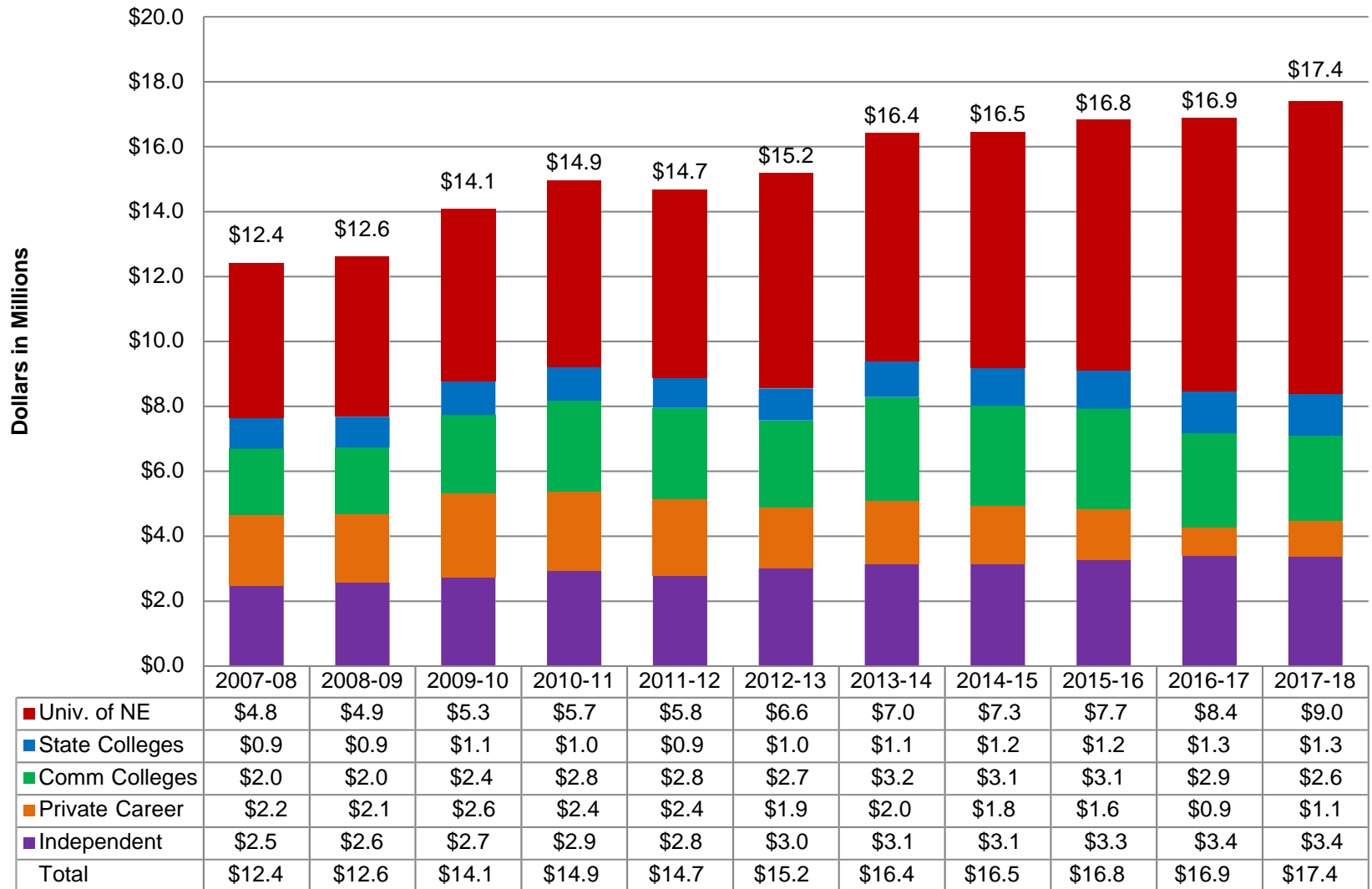


	Full-Time	3/4 Time	1/2 Time	Less Than 1/2 Time
■ Univ. of NE	3,901	188	373	23
■ State Colleges	926	83	121	26
■ Comm Colleges	1,537	922	824	380
■ Private Career	406	102	19	15
■ Independent	2,003	299	452	249
Total	8,773	1,594	1,789	693

NOG Recipients by Sector

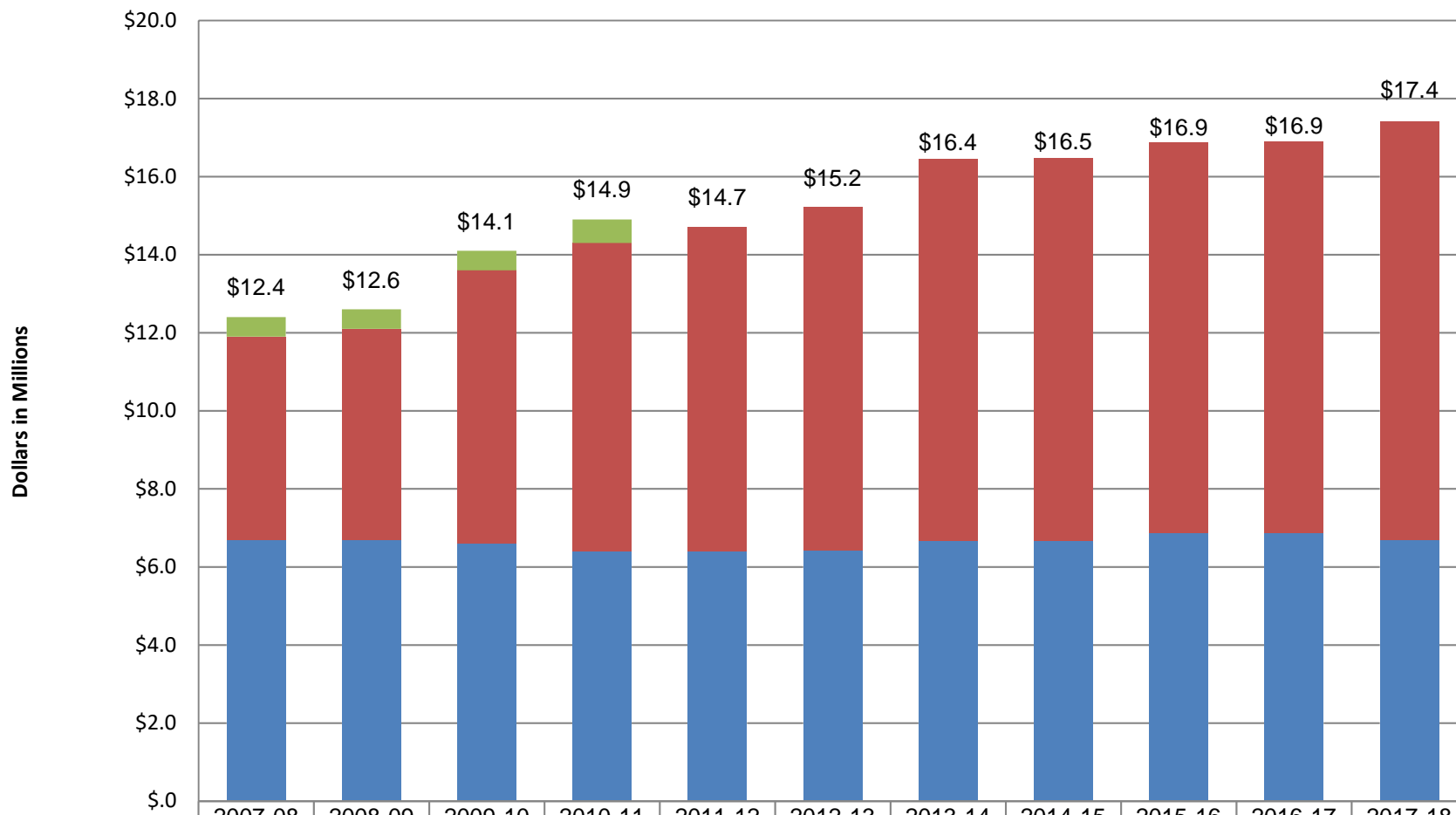


NOG Amount Awarded by Sector



Sector	# and % of Eligible Students	# and % of NOG Recipients	% of Elig who Received NOG	\$ and % of NOG Awarded	Average NOG Award
University of Nebraska (5)	12,045	4,485	37.2%	\$9,008,975	\$2,008.69
	33.4%	34.9%		51.8%	
State Colleges (3)	2,128	1,156	54.3%	\$1,288,630	\$1,114.73
	5.9%	9.0%		7.4%	
Community Colleges (6)	16,027	3,663	22.9%	\$2,615,351	\$713.99
	44.5%	28.5%		15.0%	
Private Career Schools (9)	1,185	542	45.7%	\$1,107,057	\$2,042.54
	3.3%	4.2%		6.4%	
Independent Colleges & Universities (17)	4,643	3,003	64.7%	\$3,372,485	\$1,123.04
	12.9%	23.4%		19.4%	
Total	36,028	12,849	35.7%	\$17,392,498	\$1,353.61
	100.0%	100.0%		100.0%	

NOG Funding by Source



	2007-08	2008-09	2009-10	2010-11	2011-12	2012-13	2013-14	2014-15	2015-16	2016-17	2017-18
Federal Funds	\$5	\$5	\$5	\$6	\$0	\$0	\$0	\$0	\$0	\$0	\$0
Lottery Funds	\$5.2	\$5.4	\$7.0	\$7.9	\$8.3	\$8.8	\$9.8	\$9.8	\$10.0	\$10.0	\$10.7
General Funds	\$6.7	\$6.7	\$6.6	\$6.4	\$6.4	\$6.4	\$6.7	\$6.7	\$6.9	\$6.9	\$6.7
Total	\$12.4	\$12.6	\$14.1	\$14.9	\$14.7	\$15.2	\$16.4	\$16.5	\$16.9	\$16.9	\$17.4