



**NEBRASKA'S**  
COORDINATING COMMISSION  
FOR POSTSECONDARY EDUCATION

**ACCESS COLLEGE EARLY SCHOLARSHIP  
2019-20 YEAR-END REPORT**

**Statutory Authority Neb. Rev. Stat. § 85-2106**

**Approved by the Commission  
December 3, 2020**

## COMMISSIONERS

**Dr. Deborah A. Frison, Chair**  
*Omaha, District 7*

**Dr. John Bernthal, Vice-Chair**  
*Lincoln, District 1*

**Colleen Adam**  
*Hastings, District 5*

**Gwenn Aspen**  
*Omaha, Member-at-Large*

**Tim Daniels**  
*Omaha, Member-at-Large*

**Charles Garman**  
*Omaha, Member-at-Large*

**Mary Lauritzen**  
*West Point, Member-at-Large*

**Dr. Paul Von Behren**  
*Fremont, District 3*

**W. Scott Wilson**  
*Plattsmouth, Member-at-Large*

## STAFF

**Dr. Michael Baumgartner**  
*Executive Director*

**Dr. Kathleen Fimple**  
*Academic Programs Officer*

**Jill Heese**  
*Research Coordinator*

**Kadi Lukesh**  
*Bookkeeper, Budget Coordinator  
& Office Manager*

**J. Ritchie Morrow**  
*Financial Aid Officer*

**Helen Pope**  
*Executive Assistant*

**Gary Timm**  
*Chief Finance & Administrative  
Officer*

**Joe Velasquez**  
*Database Manager*

**Mike Wemhoff**  
*Facilities Officer*

**Coordinating Commission for Postsecondary Education**  
140 N. 8th Street, P.O. Box 95005, Lincoln, NE 68509-  
5005 Phone: (402) 471-2847

The Commission's reports are available online at [ccpe.nebraska.gov/reports](http://ccpe.nebraska.gov/reports)

## Access College Early (ACE) Scholarship Program

Authorized by the Nebraska Legislature in 2007, the Access College Early (ACE) Scholarship Program pays tuition and mandatory fees for qualified, low-income high school students to enroll in college courses from Nebraska colleges or universities, either through dual enrollment or early enrollment agreements with these institutions. High school students may apply for funding under this program by completing the ACE Student Application, which is reviewed by the Coordinating Commission for award consideration.

To qualify for the scholarship, the student or student's family must be approved to participate in one of the federal need-based government programs listed below, have experienced an extreme hardship that affects family income, or be participating in a designated Career Education program as established by the Nebraska Department of Education.

- Free or Reduced Price Lunch Program
- Supplemental Security Income
- Temporary Assistance to Needy Families (TANF)
- Supplemental Nutrition Assistance Program (SNAP)
- Special Supplemental Assistance Program (WIC)

The objective of the ACE program is to encourage well-prepared high school students from low-income families to enroll in college courses. High school students who are awarded an ACE scholarship to complete college courses while in high school can decrease their time to graduation and consequently the cost of a degree. However, students must pay to take advantage of these college course opportunities to receive college credit that can jumpstart their college careers. For students who are economically disadvantaged, the financial constraints are great.

Research shows that high school students who take college courses while in high school remain in school and graduate at higher rates, enroll in college at increased rates, and return for their college sophomore years at higher rates. In Nebraska, public high school ACE recipients are 32 percentage points more likely to go on to college than other public high school students from low-income families.

As can be seen from the charts starting on page 7, public high school students who are ACE scholarship recipients continue on to college at a much greater rate than public high school students from low-income families that do not receive ACE scholarships. In fact, public high school ACE scholarship recipients continue on to college at a slightly higher rate than public high school students from non-low-income families.

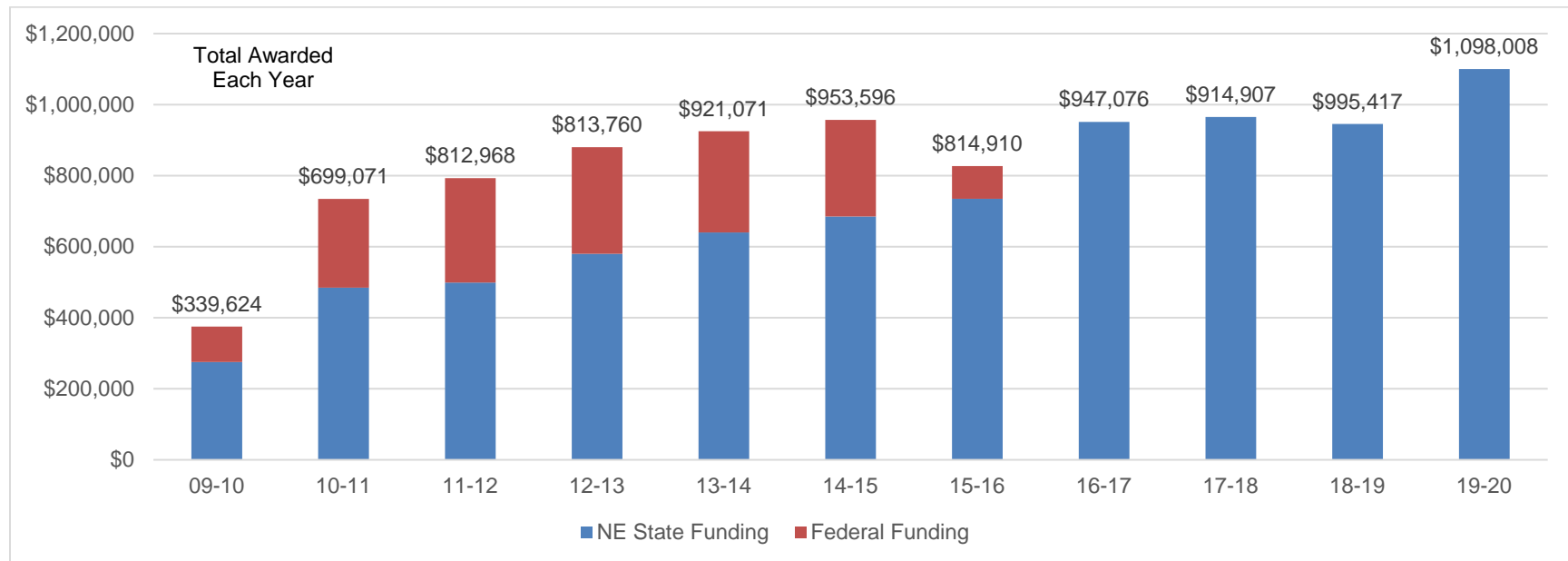
## Distribution of the 2019-20 Access College Early Scholarship

The Access College Early (ACE) Scholarship pays the tuition and mandatory fees of eligible Nebraska high school students taking dual-enrollment and early-admit college courses at participating Nebraska colleges and universities<sup>1</sup>. For 2019-20 the ACE Scholarship program was funded with \$1,100,000 General funds appropriated by the Legislature.

Nebraska colleges and universities enrolled 2,473 low-income, Nebraska high school students from 231 high schools who received 4,420 ACE Scholarships in 2019-20. The total amount awarded was \$1,098,007.82, with the average award per scholarship equaling \$248.42.

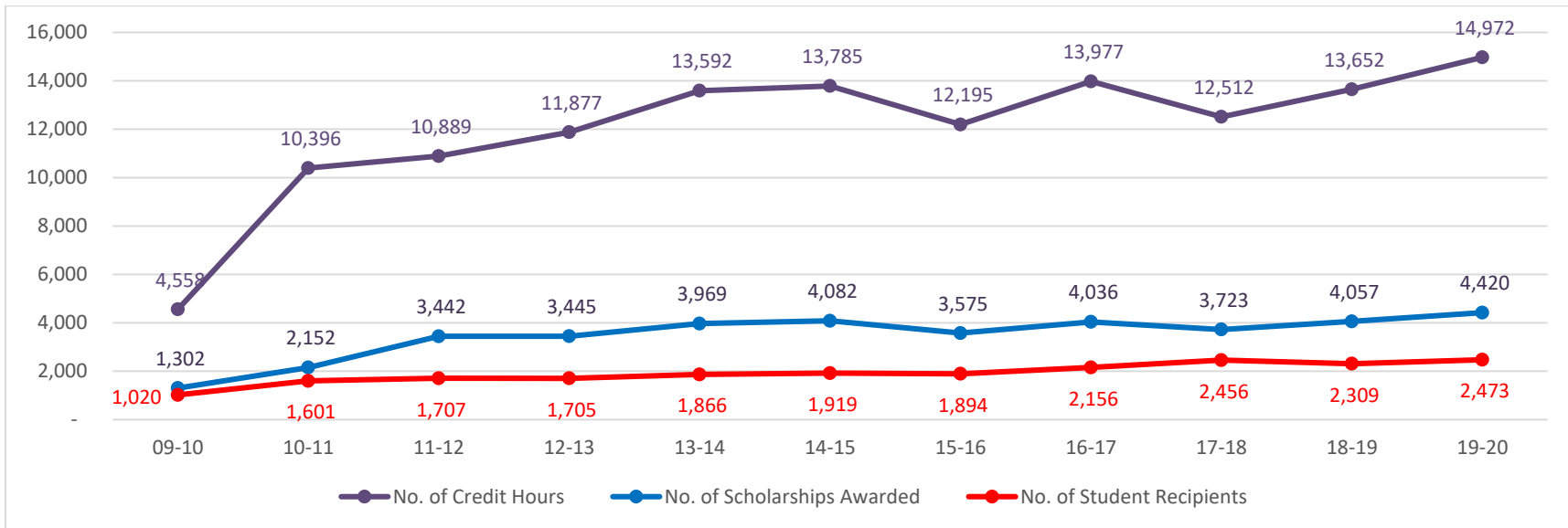
The ACE Scholarship allowed these high school students from low-income families to enroll in 14,972.5 credit hours of college course work. Seventy-six percent of the grades received by these students were a B or better. (See page 10)

### Total ACE Scholarships Funding & Awarded

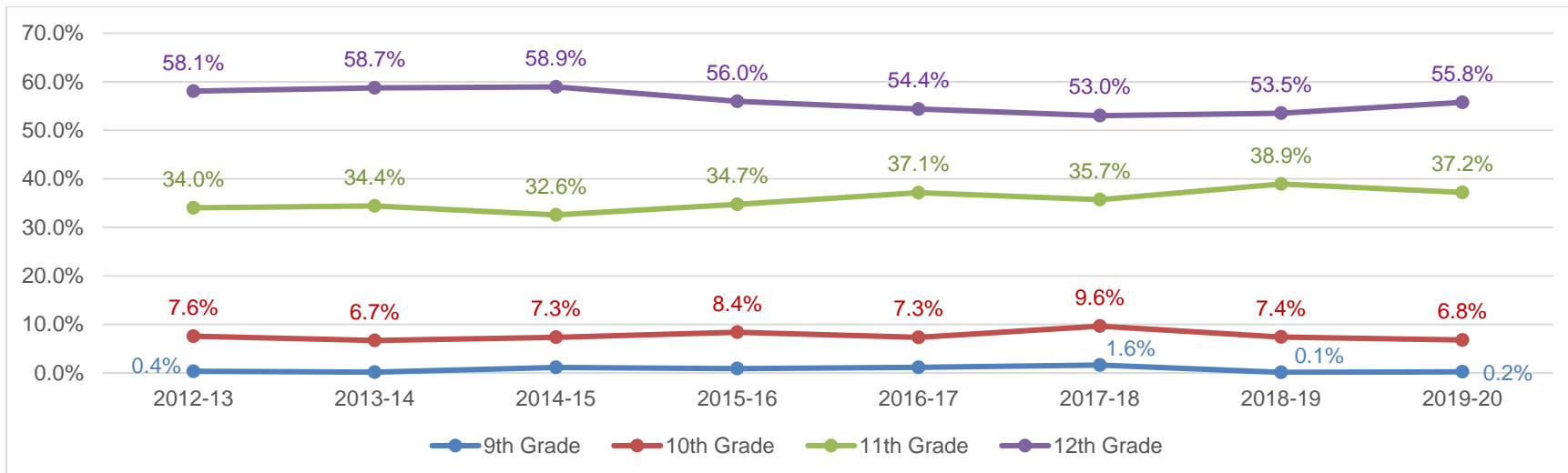


<sup>1</sup> The number of scholarships awarded to a student is limited each year based on available funding and an estimated number of students who will be applying. For 2019-20 students were limited to three scholarships for the year.

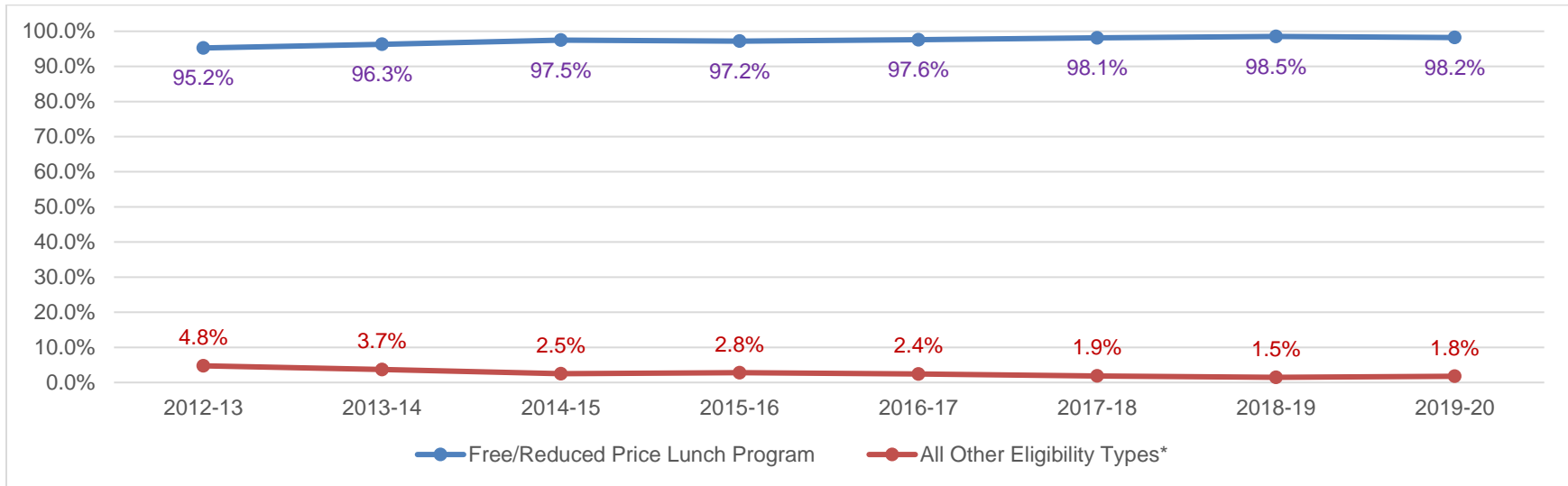
## ACE Scholarship Recipients, Scholarships Awarded, and Credit Hours Taken



## High School Grade Level of ACE Scholarship Recipients

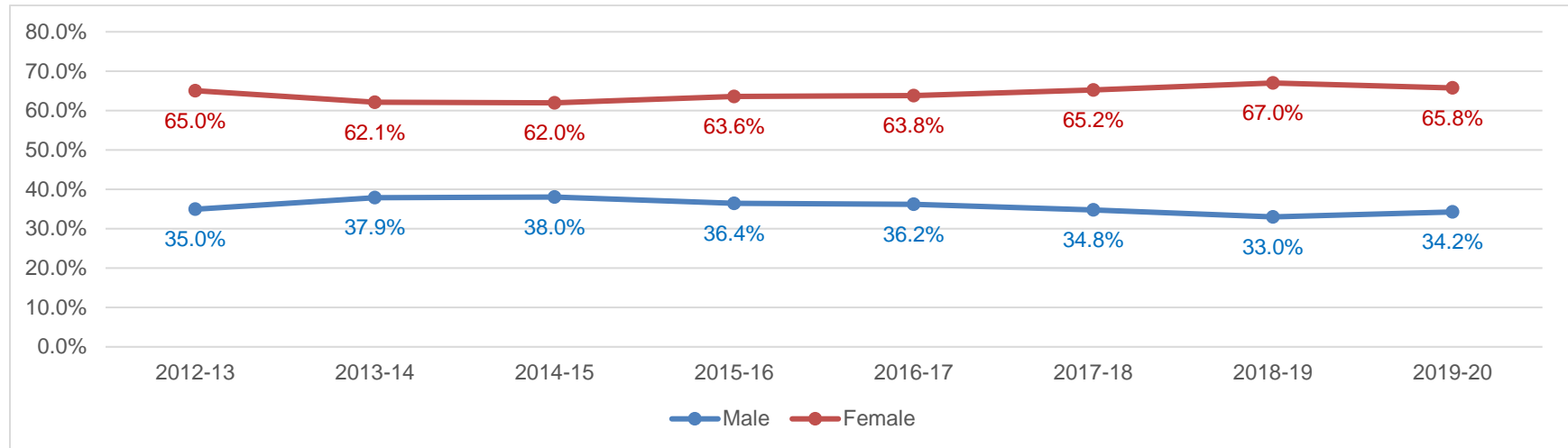


## Eligibility of ACE Recipients

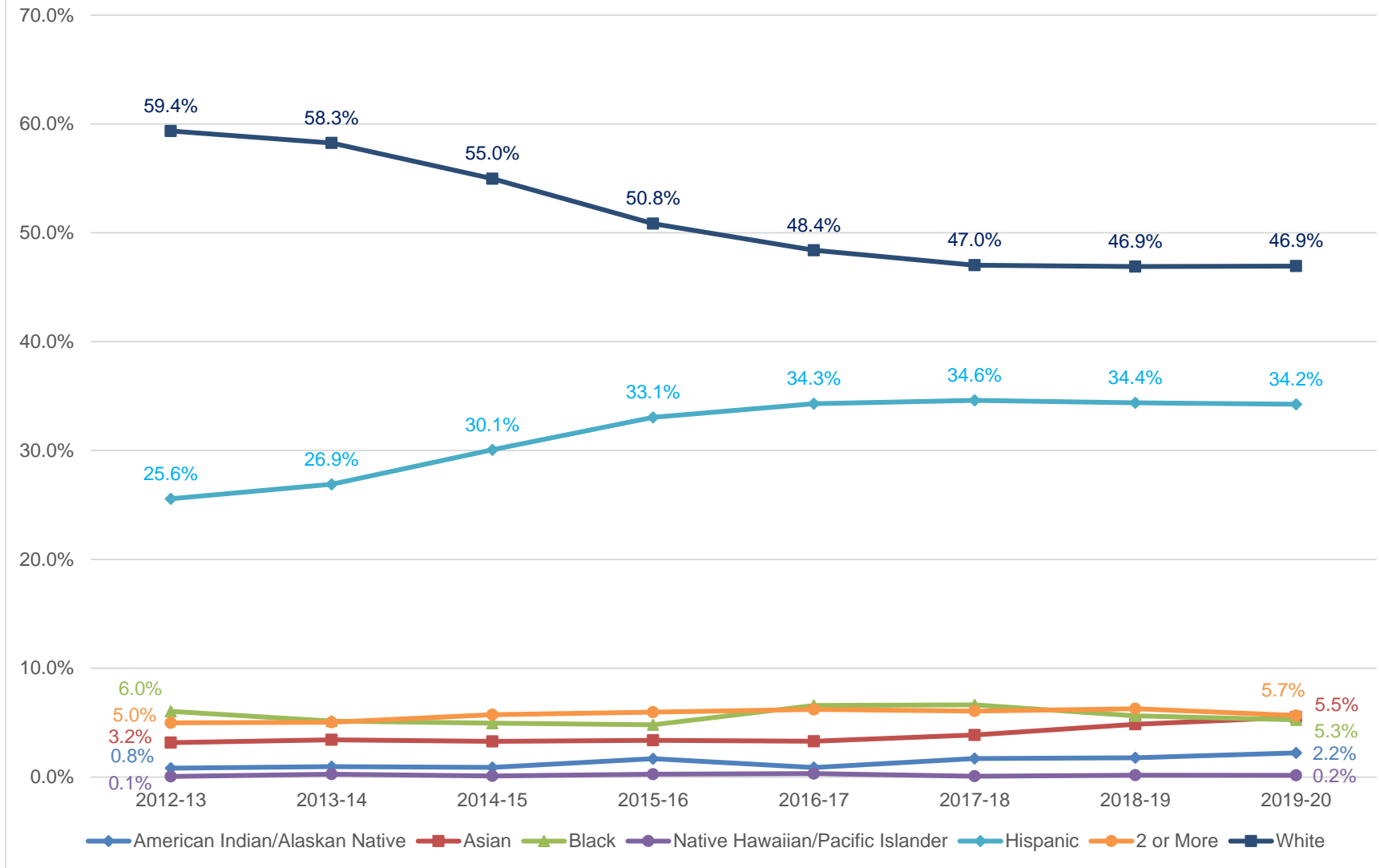


\*All Other Eligibility Types Include: CPSE – Career Program of Study; SNAP – Supplemental Nutrition Assistance Program; SSI – Supplemental Security Income; TANF – Temporary Assistance for Needy Families; WIC – Special Supplemental Nutrition Program; Other Hardship

## Gender of ACE Scholarship Recipients



### Race of ACE Scholarship Recipients



## College Continuation Rates of ACE Scholarship Recipients

Since 2009, the Coordinating Commission has conducted research to determine how many of the high school seniors who receive ACE scholarships continue on to college compared to other low-income and non-low-income graduates of Nebraska's public high schools.

For this research, a college continuation rate is defined as the percentage of public high school graduates who were enrolled in college within one year of their high school graduation. For example, for the public high school seniors who received ACE scholarships during 2018-19, the college continuation rate is the percentage of these students who were enrolled in college any time between June 1, 2019, and May 31, 2020.

Using student records and summary reports from the Nebraska Department of Education (NDE) and enrollment records from the National Student Clearinghouse (NSC), the Commission calculates the college continuation rates by gender for the public high school seniors who were ACE scholarship recipients.

The Commission then compares the college continuation rates for the seniors who received ACE scholarships while attending public high schools to the college continuation rates for other low-income and non-low-income graduates of Nebraska's public high schools.

Low-income students are defined as students who are approved to receive free or reduced-price school lunches.

Non-low-income students are students who are not approved for free or reduced-price school lunches.<sup>1</sup>

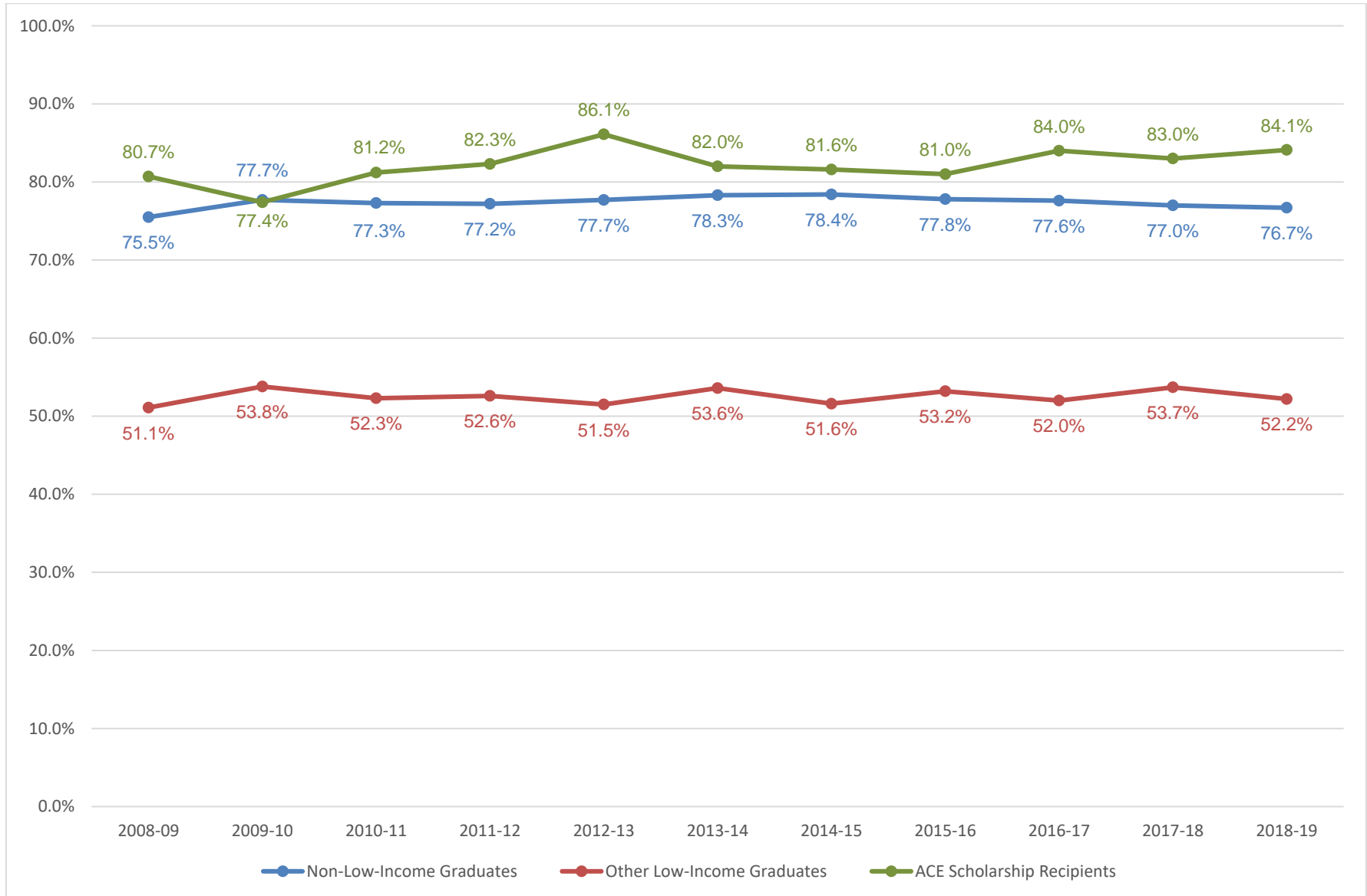
Since the Commission relies on college enrollment records from the NSC, students who continue on to college at non-NSC-reporting institutions are classified as not continuing on to college. As a result, college continuation rates reported here are underreported to some degree.

Students who were homeschooled or attended nonpublic (private) high schools are not included in this phase of the research because the NDE does not have sufficient records for the Commission to compute college continuation rates for nonpublic high school students.

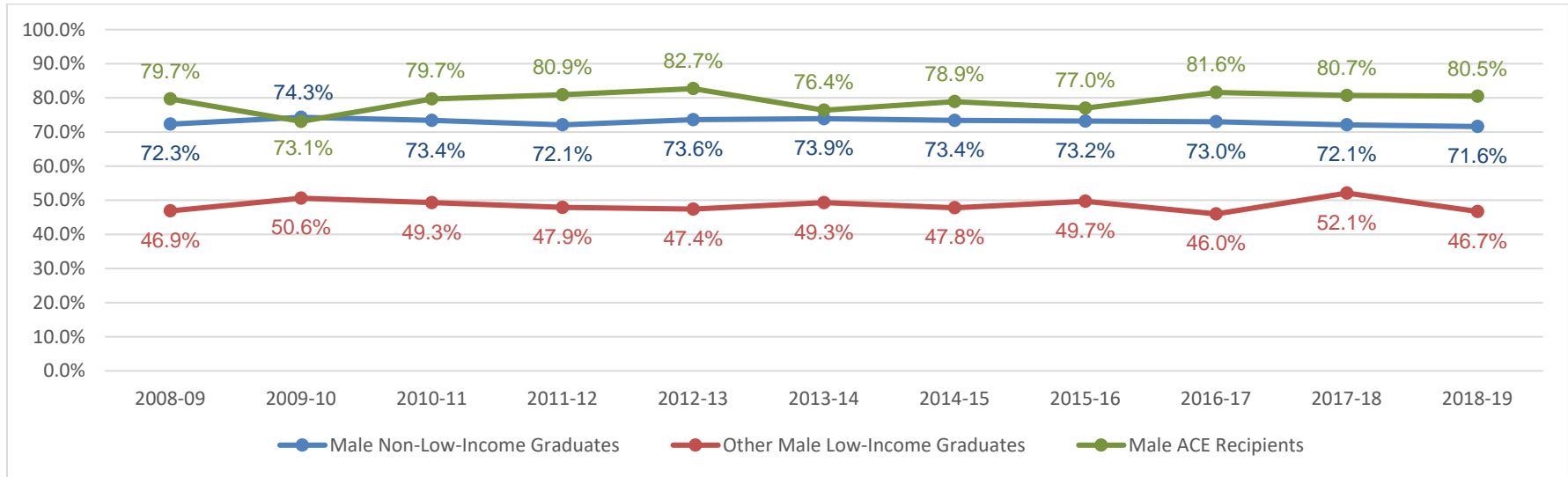
<sup>1</sup> Non-low-income students for this study include at least some students who live in low-income households but who did not apply for free or reduced-price school lunches. Since participation in the free or reduced-price school lunch program is the only indicant of household income in the student records maintained by the Nebraska Department of Education, low-income students in the non-low-income category cannot be identified and excluded for the purposes of analysis.



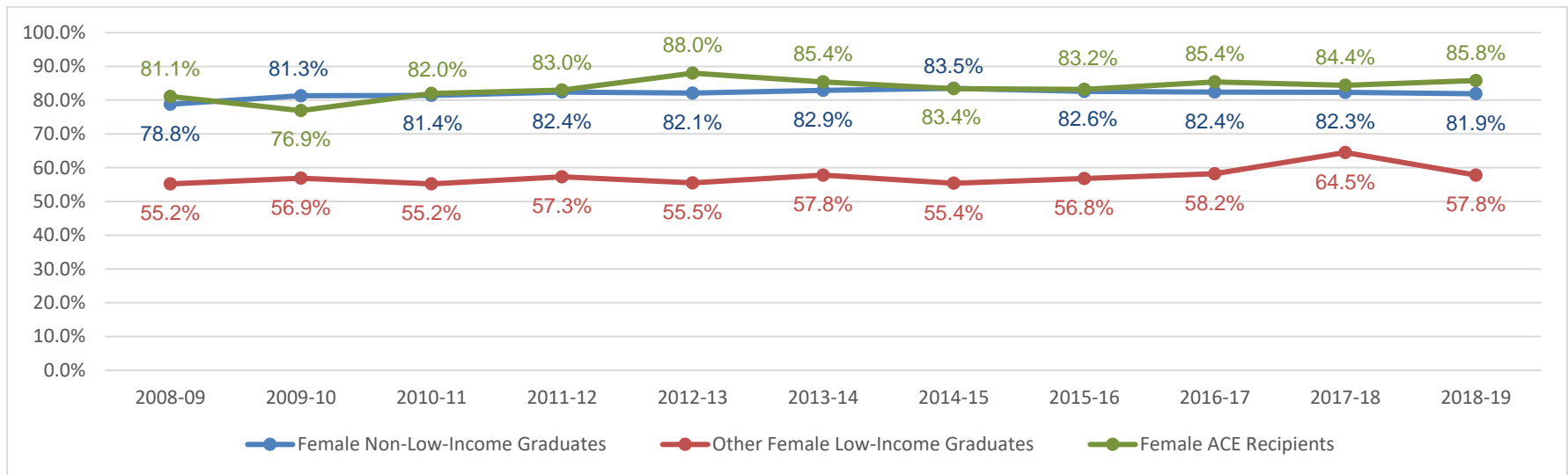
## Public High School College Continuation Rate



## Male Public High School College Continuation Rate



## Female Public High School College Continuation Rate



### 2019-20 Access College Early Scholarship

College	Amount Awarded	Number of Students	Number of Scholarships	Average per Scholarship
Bryan College of Health (BCH)	\$1,000.00	5	5	\$200.00
Central Community College (CCC)	\$272,427.00	524	867	\$314.22
Chadron State College (CSC)	\$15,982.66	28	41	\$389.82
Concordia University (CU)	\$3,630.00	9	13	\$279.23
Little Priest Tribal College (LPTC)	\$32,438.00	18	49	\$662.00
Metropolitan Community College (MCC)	\$32,467.50	176	288	\$112.29
Midland University (MU)	\$65,250.00	199	261	\$250.00
Mid-Plains Community College (MPCC)	\$56,170.00	93	163	\$344.69
NE College of Technical Agriculture (NCTA)	\$1,620.00	7	8	\$202.50
Nebraska Indian Community College (NICC)	\$5,100.00	5	10	\$510.00
Northeast Community College (NECC)	\$106,653.00	382	679	\$157.15
Nebraska Wesleyan University (NWU)	\$168,245.00	324	509	\$330.54
Peru State College (PSC)	\$23,940.00	80	128	\$188.50
Southeast Community College (SCC)	\$42,687.00	156	259	\$164.81
University of Nebraska at Kearney (UNK)	\$8,175.00	29	35	\$233.57
University of Nebraska-Lincoln (UNL)	\$330.00	1	1	\$330.00
University of Nebraska at Omaha (UNO)	\$176,091.70	474	656	\$268.43
Western Nebraska Community College (WNCC)	\$62,954.71	185	319	\$197.35
Wayne State College (WSC)	\$22,846.25	105	129	\$177.10

NOTE: Tuition and fee charges are set by each institution, so Average per Scholarship varies by institution.

NOTE 2: Student numbers on the above and following charts do not total 2,473 due to students taking classes at multiple institutions.

NOTE 3: Data related to colleges where the number of students in the above chart equaled five or less were masked in the Grades Earned per Course chart, the Gender Race/Ethnicity chart, and the Grade & Eligibility chart on the following pages.

**2019-20 Access College Early Scholarship  
Grades Earned per Course**

<b>College</b>	<b>A+</b>	<b>A</b>	<b>A-</b>	<b>B+</b>	<b>B</b>	<b>B-</b>	<b>C+</b>	<b>C</b>	<b>C-</b>	<b>D+</b>	<b>D</b>	<b>D-</b>	<b>F</b>	<b>W</b>	<b>IP**</b>	<b>Hours^</b>
BCH@																
CCC	38	387		59	195		38	69		13	19		30	19		2,596
CSC	22				9			3					5	2		125
CU	1	4	1		4			2						1		41
LPTC		3			13			19			7		7			147
MCC		127			93			35			8		11	13	1	1,405
MU		113	2		99			30			14		1	2		792
MPCC	23	70		25	20		5	7		1	3		4	4	1	509
NCTA		1		1	2	2					1		1			24
NICC		3	2		1	1		1					2			30
NECC	103	228		84	114		33	47		8	9		24	24	5	2,074
NWU	45	169	55	36	79	20	26	25	10	3	18	2	12	9		1,771
PSC		70		13	29		3	3		1	2		6			399
SCC	34	53		49	42		25	20		6	1		16	13		776
UNK	3	24	1	1	2	1	1	1								108
UNL@																
UNO	28	199	49	47	198	16	24	64	5	1	10	1	3	11		2,114
WNCC	24	68	38	19	48	22	20	26	7	7	10	3	16	11		1,040.5
WSC		62	9	10	13	9	5	12	1		1	1	5	1		467

\*\* Course work in progress

^ Total number of credit hours paid for by the scholarship

@ Data masked due to low numbers

**2019-20 Access College Early Scholarship  
Gender & Race**

<b>College</b>	<b>Female</b>	<b>Male</b>	<b>American Indian/Alaskan Native</b>	<b>Asian</b>	<b>Black</b>	<b>Native Hawaiian/Pacific Islander</b>	<b>Hispanic</b>	<b>2 or More</b>	<b>White</b>
BCH@									
CCC	311	213	4	5	9	2	219	29	256
CSC	21	7	2	1	1	3		3	18
CU	4	5					1	2	6
LPTC	11	7	17		1				
MCC	117	59	2	15	13		53	11	82
MU	151	48	1	24	14		135	7	18
MPCC	69	24			1		6	1	85
NCTA	3	4							7
NICC	3	2	5						
NECC	246	140	9	1	10		86	22	258
NWU	202	122	3	31	18		73	24	175
PSC	45	35	1	4	1		16	2	56
SCC	110	46		5	3	2	23	7	116
UNK	20	9			1		17	3	8
UNL@									
UNO	356	118	2	65	64		243	30	70
WNCC	117	68	6	2	2		63	7	105
WSC	60	45	6	4	4		45	7	39

@ Data masked due to low numbers

**2019-20 Access College Early Scholarship  
Grade & Eligibility\* Criteria**

<b>College</b>	<b>9<sup>th</sup></b>	<b>10<sup>th</sup></b>	<b>11<sup>th</sup></b>	<b>12<sup>th</sup></b>	<b>CPSE</b>	<b>F/R</b>	<b>Other Hardship</b>	<b>SNAP</b>	<b>SSI</b>	<b>TANF</b>	<b>WIC</b>
BCH@											
CCC		19	190	315		517	2	5			
CSC		1	15	12		28					
CU		2	2	5		7	2				
LPTC			9	9		18					
MCC	1	10	64	107		171	1	3	1		
MU		7	181	11		197	1	1			
MPCC		4	31	58		91	1	1			
NCTA			3	4		7					
NICC	1		1	3		5					
NECC		8	122	256		375	5	4	1		1
NWU		4	147	173		319		5			
PSC		1	24	55		80					
SCC		3	55	98		152	3	1			
UNK			16	13		29					
UNL@											
UNO	4	115	114	241		465	6	3			
WNCC		2	51	132		184			1		
WSC		6	42	57		105					

\*CPSE – Career Program of Study; F/R – Free or Reduced Price Lunch Program; SNAP – Supplemental Nutrition Assistance Program; SSI – Supplemental Security Income; TANF – Temporary Assistance for Needy Families; WIC – Special Supplemental Nutrition Program

@ Data masked due to low numbers

## Access College Early 2019-20 Number of Scholarships Awarded by High School

College (number of high schools)  
High School (number of students, number of scholarships)

### Bryan College of Health (5):

Crete (1, 1)  
Howells-Dodge (1, 1)  
Leigh (1, 1)  
Nebraska City (1, 1)  
Norris (1, 1)

### Central Community College (63):

Adams Central (Hastings) (2, 4)  
Amherst (3, 9)  
Arapahoe (5, 9)  
Arcadia (2, 5)  
Aurora (12, 13)  
Blue Hill (11, 15)  
Cambridge (3, 7)  
Central Catholic (Grand Island) (2, 2)  
Central City (10, 12)  
Central Valley (Greeley) (3, 3)  
Centura (2, 5)  
Clarkson (3, 7)  
Columbus (39, 64)  
Cozad (3, 4)  
Cross Co (Stromsburg) (1, 1)  
Deshler (1, 1)  
Doniphan-Trumbull (4, 7)  
East Butler (Brainard) (1, 2)  
Elba (2, 2)  
Elgin (1, 1)

Elm Creek (5, 10)  
Elwood (1, 1)  
Fullerton (13, 23)  
Gibbon (3, 3)  
Gothenburg (1, 1)  
Grand Island (162, 280)  
Hampton (2, 1)  
Harvard (6, 7)  
Hastings, (29, 40)  
High Plains (Polk) (1, 2)  
Holdrege (8, 9)  
Home (1, 3)  
Humphrey (1, 3)  
Kearney (8, 9)  
Lakeview (Columbus) (3, 6)  
Lawrence-Nelson (13, 29)  
Leigh (4, 9)  
Lexington (51, 67)  
Litchfield (2, 5)  
Loup City (3, 5)  
Madison (9, 9)  
Northwest (Grand Island) (8, 18)  
Ord (9, 17)  
Osceola (4, 11)  
Palmer (8, 18)  
Pleasanton (1, 1)  
Ravenna (2, 5)  
Red Cloud (2, 3)

**Central Community College (cont.)**

Riverside (Cedar Rapids) (2, 2)  
Sandy Creek (Fairfield) (9, 17)  
Schuyler (1, 2)  
Scotus Central (Columbus) (5, 6)  
S-E-M (Sumner) (2, 4)  
Shelby-Rising City (3, 7)  
Shelton (4, 7)  
Silver Lake (Roseland) (1, 1)  
Spalding Academy (6, 14)  
St Cecilia (Hastings) (1, 1)  
St Paul (2, 4)  
Sutton (4, 5)  
Verdigre (1, 1)  
Wheeler Central (Bartlett) (3, 3)  
Wood River (10, 24)

**Chadron State College (4):**

Chadron (19, 32)  
Scottsbluff (6, 6)  
SEM (Sumner) (1, 1)  
Sidney (2, 2)

**Concordia (3):**

Blue Hill (1, 1)  
Home School (6, 10)  
Seward (2, 2)

**Little Priest Tribal College (1)**

Winnebago (18, 49)

**Metropolitan Community College (22):**

Alma (4, 4)  
Arlington (2, 4)

Blair (1, 2)  
DC West (Valley) (5, 11)  
Fort Calhoun (5, 7)  
Fremont (48, 74)  
Gretna (19, 42)  
Home School (2, 4)  
Logan View (Hooper) (2, 3)  
Millard North (Omaha) (3, 5)  
Millard South (Omaha) (5, 15)  
Millard West (Omaha) (4, 8)  
Omaha Benson (16, 16)  
Omaha Bryan (4, 4)  
Omaha Burke (4, 6)  
Omaha Central (10, 10)  
Omaha Northwest (2, 2)  
Omaha South (16, 17)  
Papillion-LaVista (14, 33)  
Papillion-LaVista South (7, 16)  
Platteview (1, 1)  
Ralston (2, 4)

**Midland University (8):**

Fremont (1, 1)  
Mercy (Omaha) (1, 1)  
Omaha Benson (23, 23)  
Omaha Bryan (44, 44)  
Omaha Burke (12, 20)  
Omaha Central (10, 12)  
Omaha North (17, 17)  
Omaha South (91, 143)

**Mid-Plains Community College (25):**

Anselmo-Merna (2, 4)  
Arcadia (2, 2)



**Mid-Plains Community College (cont.)**

Brady (3, 6)  
Broken Bow (6, 13)  
Callaway (2, 3)  
Chase Co (Imperial) (3, 5)  
Dundy Co (Benkelman) (4, 6)  
Eustis-Farnam (1, 1)  
Hayes Center (1, 1)  
Hershey (1, 2)  
Hitchcock Co (Trenton) (2, 3)  
Keya Paha Co (Springview) (8, 13)  
Maxwell (4, 6)  
McCook (2, 5)  
Medicine Valley (Curtis) (1, 1)  
Mullen (3, 3)  
North Platte (21, 42)  
Ogallala (3, 6)  
Paxton (3, 4)  
Perkins Co (Grant) (3, 3)  
Sandhills (Dunning) (2, 4)  
Sargent (6, 13)  
Southwest (Bartley) (1, 3)  
Stapleton (4, 5)  
Sutherland (2, 4)  
Thedford (3, 5)

**Nebraska College of Technical Agriculture (6):**

Arcadia (1, 1)  
Elwood (1, 1)  
Medicine Valley (Curtis) (1, 2)  
Palmer (1, 1)  
Sargent (1, 1)  
York (2, 2)

**Nebraska Indian Community College (1)**

Santee (5, 10)

**Nebraska Wesleyan (40):**

Alma (5, 5)  
Aurora (9, 9)  
Bancroft-Rosalie (1, 1)  
Bishop Neumann (Wahoo) (1, 1)  
Blair (1, 2)  
Bridgeport (23, 23)  
Central Valley (Greeley) (4, 8)  
Columbus (5, 5)  
Elkhorn (Omaha) (2, 3)  
Elkhorn South (Omaha) (1, 2)  
Franklin (5, 12)  
Gordon-Rushville (15, 15)  
Hastings (12, 27)  
Lexington (28, 51)  
Lincoln East (3, 3)  
Lincoln High (5, 7)  
Lincoln North Star (83, 162)  
Lincoln Northeast (13, 20)  
Lincoln Southeast (9, 16)  
Lincoln Southwest (2, 2)  
Marian (Omaha) (3, 6)  
Norfolk (5, 5)  
Norris (9, 16)  
Northeast (Lyons) (4, 6)  
Oakland-Craig (1, 1)  
Ord (5, 5)  
Overton (1, 1)  
Papillion-LaVista South (2, 4)  
Platteview (2, 3)  
Riverside (Cedar Rapids) (5, 9)

**Nebraska Wesleyan University (cont.)**

Roncalli (Omaha) (1, 2)  
SEM (Sumner) (1, 1)  
Sidney (7, 10)  
South Sioux (21, 22)  
Southern Valley (Oxford) (7, 10)  
St Cecilia (Hastings) (1, 1)  
Stuart (10, 14)  
Wayne (3, 5)  
West Point-Beemer (7, 13)  
Westside (Omaha) (1, 1)

**Northeast Community College (51):**

Ainsworth (3, 9)  
Bancroft-Rosalie (6, 15)  
Battle Creek (5, 13)  
Bloomfield (4, 8)  
Boone Central (Albion) (4, 5)  
Boyd Co (Spencer) (8, 24)  
Burwell (13, 22)  
Cedar Cath (Hartington) (4, 6)  
Central City (2, 3)  
Chambers (4, 10)  
Clearwater (2, 4)  
Creighton (12, 28)  
Deshler (1, 1)  
Elgin (4, 6)  
Elkhorn Valley (Tilden) (4, 4)  
Ewing (6, 14)  
Guardian Angels Cath (West Point) (2, 3)  
Hartington-Newcastle (6, 11)  
Home (2, 5)  
Homer (3, 4)  
Howells-Dodge (3, 3)

Keya Paha Co (Springview) (4, 4)  
Laurel-Concord-Coleridge (6, 6)  
Madison (9, 20)  
Neligh-Oakdale (6, 9)  
Newman Grove (4, 4)  
Niobrara (5, 7)  
Norfolk (58, 96)  
Northeast (Lyons) (2, 5)  
Oakland-Craig (9, 17)  
O'Neill (6, 12)  
Orchard (5, 7)  
Pender (1, 2)  
Pierce (6, 12)  
Plainview (4, 10)  
Ponca (1, 2)  
Randolph (2, 3)  
Rock Co (Bassett) (8, 16)  
South Sioux (60, 69)  
Stanton (4, 6)  
Stuart (9, 16)  
Tekamah-Herman (9, 20)  
Verdigre (3, 4)  
Wakefield (8, 13)  
Wausa (5, 7)  
Wayne (2, 2)  
West Holt (8, 17)  
West Point-Beemer (23, 49)  
Winside (2, 3)  
Wisner-Pilger (7, 14)  
Wynot (12, 29)

**Peru State College (20):**

Arcadia (3, 4)  
Aurora (1, 1)

**Peru State College (cont.)**

Beatrice (11, 20)  
Bruning-Davenport (2, 3)  
Centennial (Utica) (1, 3)  
Crete (1, 1)  
Cross Co (Stromsburg) (2, 5)  
Filmore Central (Geneva) (1, 2)  
HTRS (Humboldt) (10, 20)  
Johnson Co (Tecumseh) (7, 7)  
McCool Junction (1, 2)  
Meridian (Daykin) (3, 3)  
Nebraska City (2, 2)  
North Bend (1, 3)  
Orchard (2, 2)  
Riverside (Cedar Rapids) (1, 1)  
Scribner-Snyder (4, 8)  
Tri County (Dewitt) (3, 6)  
Wausa (2, 3)  
York (22, 31)

**Southeast Community College (37):**

Ashland-Greenwood (, 3)  
Beatrice (13, 19)  
Crete (1, 9)  
Deshler (3, 2)  
Fairbury (3, 3)  
Falls City (14, 30)  
Friend (, 4)  
Heartland (Henderson) (, 4)  
Home School (3, 4)  
HTRS (Humboldt) (4, 9)  
Johnson-Brock (, 6)  
Lincoln Christian (1, 1)  
Lincoln East (, 3)

Lincoln High (2, 4)  
Lincoln North Star (5, 21)  
Lincoln Northeast (4, 9)  
Lincoln Southeast (7, 6)  
Lincoln Southwest (1, 6)  
Malcolm (2, 3)  
Mead (2, 7)  
Meridian (Daykin) (, 2)  
Milford (2, 6)  
Norris (Firth) (6, 8)  
Parkview Christian (Lincoln) (, 3)  
Pawnee City (7, 9)  
Pius X (Lincoln) (1, 2)  
Plattsmouth (, 3)  
Raymond Central (1, 3)  
Seward (1, 1)  
Southern (Wymore) (4, 11)  
Wahoo (5, 6)  
Waverly (3, 2)  
Weeping Water (, 2)  
Wilber-Clatonia (, 4)  
Wynot (2, 3)  
York (41, 23)  
Yutan (5, 18)

**University of Nebraska at Kearney (8):**

Central City (2, 3)  
Elwood (2, 3)  
Gibbon (2, 3)  
Grand Island (1, 1)  
Holdrege (1, 1)  
Kearney (1, 3)  
Kearney Catholic (1, 2)  
Lexington (19, 19)

**University of Nebraska – Lincoln (1):**

Northwest (Grand Island) (1, 1)

**University of Nebraska at Omaha (27):**

Bellevue East (2, 2)

Bellevue West (7, 18)

Bennington (1, 1)

Crete (2, 2)

Elkhorn (Omaha) (4, 5)

Home (1, 2)

Marian (Omaha) (3, 3)

Mercy (Omaha) (1, 1)

Millard South (Omaha) (1, 1)

Millard West (Omaha) (1, 2)

Omaha Benson (71, 77)

Omaha Bryan (62, 83)

Omaha Burke (32, 68)

Omaha Central (44, 69)

Omaha North (27, 42)

Omaha Northwest (24, 33)

Omaha South (170, 218)

Papillion-La Vista (1, 1)

Papillion-La Vista South (4, 8)

Platteview (1, 2)

Plattsmouth (1, 1)

Ralston (3, 6)

Roncalli (Omaha) (1, 1)

Skutt (Omaha) (1, 2)

Westside (Omaha) (8, 8)

**Wayne State College (20):**

Aurora (3, 3)

Bancroft-Rosalie (3, 6)

Boone Central (Albion) (1, 1)

Fullerton (13, 17)

Grand Island (10, 13)

Harvard (4, 4)

Howells-Dodge (2, 2)

Laurel-Concord-Coleridge (1, 1)

Neligh-Oakdale (1, 2)

Niobrara (3, 5)

Norfolk (2, 5)

Osmond (1, 3)

Plainview (1, 1)

Riverside (Cedar Rapids) (1, 1)

South Sioux (48, 54)

St Edward (1, 1)

Twin River (Genoa) (1, 2)

Wausa (1, 1)

Wayne (3, 3)

West Point-Beemer (5, 6)

**Western Nebraska Community College (14):**

Alliance (5, 11)

Bayard (4, 6)

Bridgeport (33, 64)

Chadron (6, 7)

Crawford (2, 3)

Garden County (Oshkosh) (3, 7)

Gordon-Rushville (28, 39)

Hyannis (2, 4)

Leyton (1, 3)

Minatare (4, 6)

Mitchell (5, 8)

Morrill (7, 11)

Scottsbluff (81, 146)

Sidney (4, 4)

## Access College Early 2019-20 Courses Taken by Scholarship Recipients

College (number of different subject areas)  
Subject Area (number of scholarships)

### **Bryan College of Health (1):**

Health (5)

### **Central Community College (30):**

Accounting (2)  
Agriculture Sciences (12)  
Adv Mfg Design Tech (17)  
Auto Body (67)  
Biological Sciences (42)  
Business Admin (4)  
Business Tech (1)  
Chemistry (3)  
Construction Tech (9)  
Drafting & Design Tech (17)  
Economics (5)  
Education (2)  
English (176)  
Entrepreneurship (2)  
History (57)  
Health Occupations (74)  
Information Tech (19)  
Mathematics (99)  
Media Arts (5)  
Music (18)  
Nutrition (6)  
Physical Education (16)  
Physical Science (2)  
Political Science (18)

Psychology (36)

Sociology (7)

Spanish (1)

Speech (138)

Theatre (2)

Welding Tech (10)

### **Chadron State College (8):**

Education (3)

English (5)

Finance (6)

History (4)

Mathematics (13)

Marketing (2)

Physical Education (5)

Psychology (3)

### **Concordia (1)**

Chemistry (2)

English (4)

Spanish (7)

### **Little Priest Tribal College (9)**

Education (1)

English (12)

History (4)

Math (3)

Music (4)

**Little Priest Tribal College (cont.)**

Native Am Studies (1)  
Political Science (13)  
Psychology (10)  
Sociology (1)

**Metropolitan Community College (28):**

Accounting (2)  
Auto Collision Tech (3)  
Biology (10)  
Business Admin (6)  
Civil Engineering Tech (2)  
Criminal Justice (12)  
Design/Media Arts (3)  
Early Childhood (13)  
Economics (7)  
Emergency Medical Services (5)  
English (37)  
Entrepreneurship (1)  
Finance (29)  
Fire Science Tech (3)  
Geography (9)  
Health Info Mngt Systems (17)  
History (9)  
Health (17)  
Human Resources (5)  
Industrial/Commercial Trade (3)  
Information Tech (18)  
Mathematics (34)  
Photography (1)  
Psychology (3)  
Sociology (20)  
Spanish (1)  
Speech (12)

Video/Audio Communication (2)  
Welding (4)

**Midland University (4):**

Chemistry (9)  
English (108)  
Earth Science (6)  
History (138)

**Mid-Plains Community College (19):**

Accounting (2)  
Art (4)  
Biology (9)  
Business Admin (5)  
Chemistry (3)  
Emergency Med Services (1)  
English (58)  
History (12)  
Information Tech (1)  
Mathematics (35)  
Nursing Asst (3)  
Office Tech (6)  
Physical Science (2)  
Political Science (5)  
Psychology (13)  
Sociology (1)  
Speech (3)

**Nebraska College of Technical Agriculture (3):**

Agronomy (2)  
Animal Science (5)  
Economics (1)

**Nebraska Indian Community College (7)**

Business Admin (2)  
Early Childhood Ed (1)  
Education (1)  
English (3)  
History (1)  
Health, Physical Ed & Rec (1)  
Native Am Studies (1)

**Nebraska Wesleyan (16):**

Accounting (4)  
Art History (2)  
Art (3)  
Biology (20)  
Business Admin (3)  
Chemistry (12)  
Chemistry Lab (12)  
Communication Studies (23)  
Economics (14)  
English (220)  
French (5)  
German (3)  
History (110)  
Mathematics (53)  
Physics (9)  
Political Science (3)  
Spanish (13)

**Northeast Community College (31):**

Accounting (18)  
Agriculture (11)  
Automotive Tech (5)  
Biology (27)  
Building Construction (13)

Business (15)  
Criminal Justice (4)  
Drafting (4)  
Early Childhood (3)  
Economics (13)  
English (13)  
Geography (1)  
Graphic Design (3)  
History (27)  
Health Education (30)  
Health/Physical Ed/Rec (33)  
Home Economics (2)  
Horticulture/Golf Course Mngt (2)  
Human Services (2)  
Information Tech (7)  
Mathematics (118)  
Music (3)  
Nurse Aide (51)  
Paramedic (3)  
Political Science (17)  
Psychology (68)  
Sociology (11)  
Spanish (13)  
Speech (61)  
Utility Line (1)  
Welding (13)

**Peru State College (10):**

Biological Science (11)  
Chemistry (3)  
English (55)  
History (8)  
Mathematics (8)  
Political Science (13)

**Peru State College (cont.)**

Psychology (17)  
Sociology (4)  
Speech (8)

**Southeast Community College (23):**

Agriculture (9)  
Bioscience (10)  
Business Admin (8)  
Criminal Justice (12)  
Design & Drafting (1)  
Early Childhood Ed (4)  
Economics (4)  
Education (16)  
English (43)  
Food Service/Hospitality (13)  
History (10)  
Health (15)  
Information Tech (6)  
Mathematics (49)  
Medical Assisting (8)  
Medical Lab (1)  
Political Science (5)  
Precision Machining & Auto Tech (1)  
Psychology (19)  
Sociology (6)  
Speech (17)  
Welding (2)

**University of Nebraska at Kearney (8):**

Art (1)  
Biology (3)  
Cyber Systems (1)  
English (8)

History (1)  
Spanish (19)  
Speech (1)  
Teachers Education (1)

**University of Nebraska – Lincoln (1):**

Art History (1)

**University of Nebraska at Omaha (26):**

Anthropology (1)  
Art/Art History (7)  
Biology (29)  
Biomechanics (1)  
Communication Studies (5)  
Computer Science/IST (7)  
Criminal Justice (2)  
Cybersecurity (1)  
Economics (2)  
English (118)  
French (2)  
Geography (109)  
German (1)  
History (29)  
Information Science & Tech (28)  
Mathematics (37)  
Music (6)  
Philosophy (1)  
Physics (22)  
Political Science (112)  
Psychology (18)  
Religion (8)  
Sociology (4)  
Spanish (78)  
Teacher Ed (27)



**University of Nebraska at Omaha (cont.)**

Writer's Workshop (1)

**Wayne State College (16):**

Art (1)

Biology (1)

Business Admin (2)

Computer Info Systems (3)

Communication Arts (2)

Drafting & Design (1)

Education (25)

English (7)

Family & Consumer Science (1)

Human Services (1)

Mathematics (61)

Music (1)

Political Science (3)

Psychology (15)

Sociology (4)

Spanish (1)

**Western Nebraska Community College (23):**

Accounting (7)

Agriculture (2)

Auto Body Tech (21)

Automotive Tech (4)

Biological Sciences (19)

Business Admin (3)

Business Technology (1)

Criminal Justice (6)

Early Childhood Ed (2)

Economics (4)

Education (7)

Emergency Medical Services (1)

English (108)

History (14)

Health (12)

Human Services (4)

Information tech (3)

Mathematics (42)

Nursing Assistant (17)

Physical Education (1)

Political Science (1)

Personal Development (6)

Psychology (19)

Sociology (2)

Spanish (2)

Speech (1)

Theatre (1)

Welding (5)